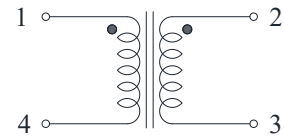
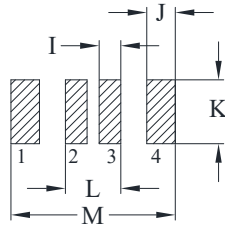
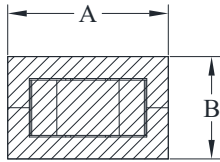


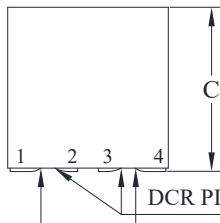


## DELTA P/N : TLM966411F Series

### Mechanical Dimensions & Schematic

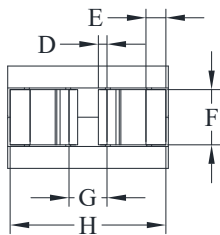


Schematic



DCR PIN 2-3 Measure Points

DCR PIN 1-4 Measure Points



Suggested PWB Layout

UNIT : mm  
 A = 9.60 MAX  
 B = 6.40 MAX  
 C = 10.50 MAX  
 D = 0.50  
 E = 1.15  
 F = 3.20  
 G = 2.20  
 H = 9.00  
 I = 1.25  
 J = 1.65  
 K = 3.70  
 L = 3.20  
 M = 9.50



### Electrical Characteristics @ 25°C, 100kHz, 1V

Delta P/N	L (nH) ± 15%	Li (nH) MIN	DCR (mΩ) ± 10%		Isat <sup>1</sup> (A)			Ir <sup>2</sup> (A)	
			1-4	2-3	25°C	100°C	125°C	1-4	2-3
TLM966411F-101	100	64	0.125	0.33	98	83	78	75	47
TLM966411F-121	120	77			79	67	63		
TLM966411F-151	150	96			62	53	49		
TLM966411F-181	180	115			54	46	43		

1. Isat is the DC current which causes the inductance drop to Li.
2. Ir is the DC current which causes the surface temperature of the part increase approximately 40 °C.
3. Operating temperature: -40°C to 125°C (Self-temperature rise included).

# Mouser Electronics

Authorized Distributor

Click to View Pricing, Inventory, Delivery & Lifecycle Information:

[Cyntec:](#)

[TLM966411F-181](#) [TLM966411F-121](#) [TLM966411F-101](#) [TLM966411F-151](#)