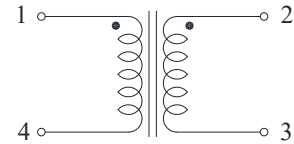
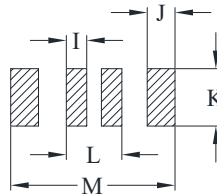
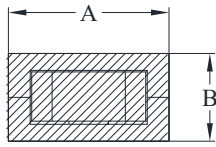




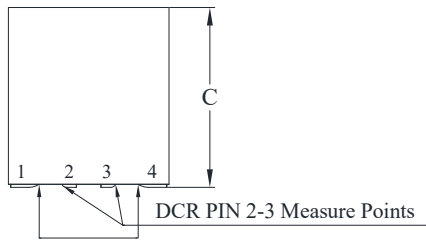
## DELTA P/N: TLM106012F-L Series

### Mechanical Dimensions

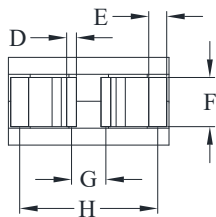


Suggested PWB Layout

Schematic



DCR PIN 1-4 Measure Points



UNIT : mm  
 A = 10.0 MAX  
 B = 6.0 MAX  
 C = 12.0 MAX  
 D = 0.6  
 E = 1.1  
 F = 3.0  
 G = 2.1  
 H = 8.45  
 I = 1.25  
 J = 1.7  
 K = 3.5  
 L = 3.4  
 M = 10.05



### Electrical Characteristics @ 25°C, 100kHz, 1V

Delta P/N	L (nH) ± 10%	Li (nH) MIN	DCR (mΩ) ± 10%		Isat <sup>1</sup> (A)			Ir <sup>2</sup> (A)	
			1-4	2-3	25°C	100°C	125°C	1-4	2-3
TLM106012F-101L	100	70	0.125	0.37	110	95	88	75	43
TLM106012F-121L	120	84			92	79	73		
TLM106012F-151L	150	105			73	63	58		

1. Isat is the DC current which causes the inductance drop to Li.
2. Ir is the DC current which causes the surface temperature of the part increase approximately 40 °C.
3. Operating temperature: -40°C to 125°C (Self-temperature rise included).

# Mouser Electronics

Authorized Distributor

Click to View Pricing, Inventory, Delivery & Lifecycle Information:

[Cyntec:](#)

[TLM106012F-151L](#) [TLM106012F-121L](#) [TLM106012F-101L](#)