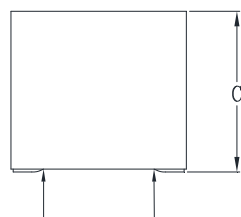
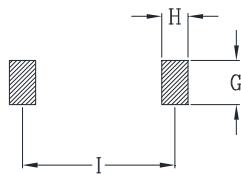
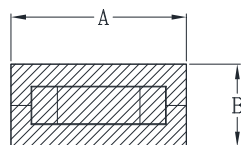




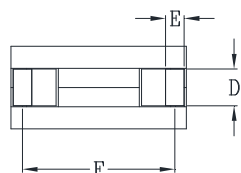
## DELTA P/N : HCME1211F Series

### Mechanical Dimensions



Suggested PWB Layout

DCR Measure Points



UNIT : mm  
 A = 11.7±0.3  
 B = 5.7±0.3  
 C = 10.7±0.3  
 D = 2.45±0.3  
 E = 1.3±0.3  
 F = 10.1±0.5  
 G = 2.95  
 H = 1.8  
 I = 10.1

### Electrical Characteristics @ 25°C, 100kHz, 1V

Delta P/N	L (nH) ± 15%	Li (nH) MIN	DCR (mΩ) ± 10%	Isat <sup>1</sup> (A)			Ir <sup>2</sup> (A)
				25°C	100°C	125°C	
HCME1211F-700	70	49	0.125	159	135	127	77
HCME1211F-900	90	63		140	119	112	
HCME1211F-101	100	70		118	100	94	
HCME1211F-121	120	84		98	83	78	
HCME1211F-151	150	105		76	65	61	
HCME1211F-171	170	119		65	55	52	

1. Isat is the DC current which causes the inductance drop to Li.
2. Ir is the DC current which causes the surface temperature of the part increase approximately 40 °C.
3. Operating temperature: -40°C to 125°C (Self-temperature rise included).

# Mouser Electronics

Authorized Distributor

Click to View Pricing, Inventory, Delivery & Lifecycle Information:

[Cyntec:](#)

[HCME1211F-151](#) [HCME1211F-121](#) [HCME1211F-700](#) [HCME1211F-171](#) [HCME1211F-900](#) [HCME1211F-101](#)