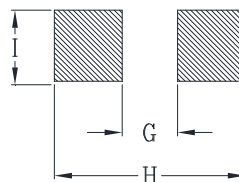
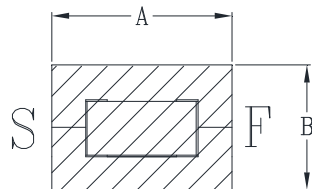


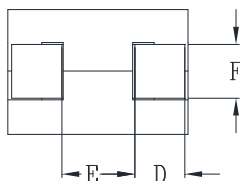
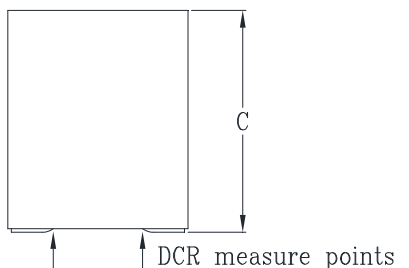


DELTA P/N : HCUVE117512 Series

Mechanical dimensions



Suggested PWB Layout



UNIT : mm

A = 10.7 MAX

B = 7.5 MAX

C = 12.0 MAX

D = 2.8

E = 4.4

F = 3.1

G = 3.7

H = 10.9

I = 3.6

Electrical Characteristics @ 25°C, 100kHz, 1V

Delta P/N	L ¹ (nH)	Li (nH) MIN	DCR (mΩ)	Isat ² (A)			Ir ³ (A)
				25°C	100°C	125°C	
HCUVE117512-151	150	96	0.15 ± 10%	119	97	89	75
HCUVE117512-221	220	141		81	64	60	
HCUVE117512-251	250	160		70	56	52	
HCUVE117512-271	270	173		64	51	48	
HCUVE117512-301	300	192		57	46	42	
HCUVE117512-321	320	205		54	43	40	
HCUVE117512-401	400	256		43.5	35	32	
HCUVE117512-471	470	301		36	29	27	
HCUVE117512-601	600	384		26	21	19	

1. Tolerance of inductance : ± 10%
2. Isat is the DC current which causes the inductance drop to Li.
3. Ir is the DC current which causes the surface temperature of the part increase approximately 40 °C.
4. Operating temperature: -40°C to 125°C (Self-temperature rise included).

Mouser Electronics

Authorized Distributor

Click to View Pricing, Inventory, Delivery & Lifecycle Information:

[Cyntec:](#)

[HCUVE117512-601](#) [HCUVE117512-301](#) [HCUVE117512-151](#) [HCUVE117512-251](#) [HCUVE117512-401](#)
[HCUVE117512-271](#) [HCUVE117512-221](#) [HCUVE117512-471](#) [HCUVE117512-321](#)