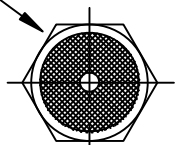


.250[6.35] HEX

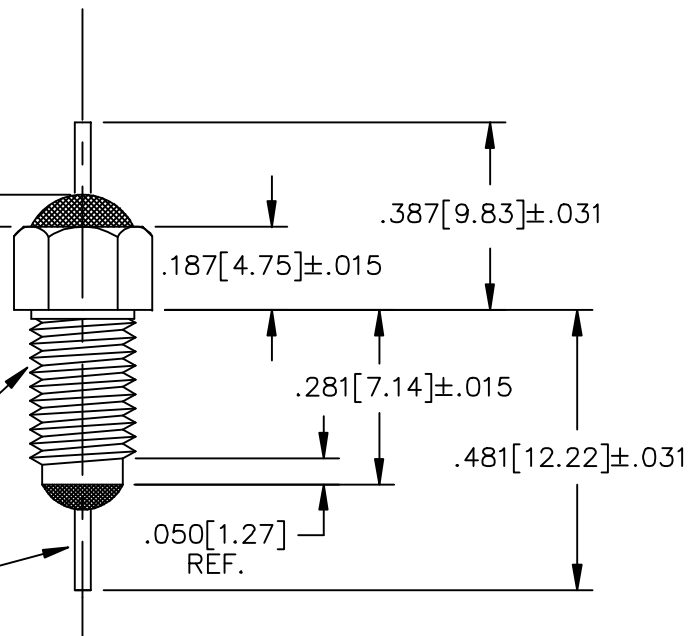


.060 MAX. POTTING HEIGHT (2X)

MOUNTING SURFACE

#12-32UNEF-2A THD.

∅.032[0.82]



NOTES:

1) HARDWARE IS INCLUDED.



| | |
|-----------------|-------------------------------|
| BUSHING FINISH: | SILVER |
| LEAD FINISH: | SOLDER |
| CAPACITANCE | 14nF GMV |
| TEMP. RANGE | -55°C TO +125°C |
| CURRENT | 10 AMP MAX. |
| WORKING VOLTAGE | 85°C 250 VDC 125°C 180 VDC |

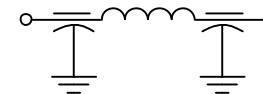


DCR. = .01 ohms MAX.

IL=PER MIL-STD-220, @25°C N/L

| FREQ. MHz | I.L. (db) |
|-----------|-----------|
| 1 | 4 |
| 5 | 17 |
| 10 | 33 |
| 20 | 55 |
| 50 | 60 |
| 100 | 70 |
| 200 | 70 |
| 1GHz | 70 |

SCHEMATIC



MARKING:

PART: SCI 1297-001
 BAG: 1297-001
 DATE CODE
 QTY./BAG
 (100 MAX.)

| REV. NO. | 7 | 5 | 4 | 3 | |
|---------------------------------------|------------------|-----------|-----------|----------------------|--|
| CHANGE NOTICE | CN 27420 | CN 200736 | CN 199786 | CN 184988 REDRAWN | |
| TOLERANCES UNLESS OTHERWISE SPECIFIED | Fractions ± 1/64 | | | | |
| | Dec. .xx± | | | | |
| | Dec. .xxx± .015 | | | | |
| | Angles ±0° 30' | | | | |
| CODE IDENT. NO. | DLSP2 | | | | |

ERIE, FAIRVIEW
PENNSYLVANIA

SPECTRUM CONTROL INC.

| | |
|-------------------------------|-----------------------|
| Dwn. KAUFFMAN | Description |
| Ckd. 5-26-06 | Pi, RESIN SEAL FILTER |
| Engr. STRUCHEN | 1297-001 |
| <p>THIRD ANGLE PROJECTION</p> | |