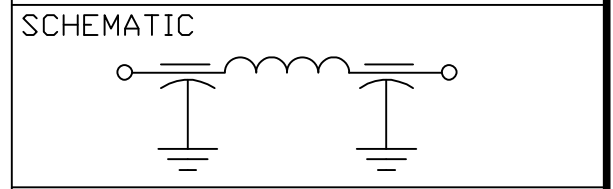
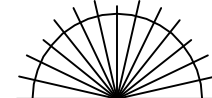


- NOTES:
- 1) LEADS MUST BE STRAIGHT.
  - 2) HARDWARE IS INCLUDED.

CAPACITANCE	7500pF $\pm$ 15%
TEMP. RANGE	-55°C TO +125°C
CURRENT	10 AMP MAX.
WORKING VOLTAGE	85°C 100 VDC 125°C 100 VDC
DCR. = .01 ohms MAX.	
IL=PER MIL-STD-220, @25°C N/L	
FREQ. MHz	I.L. (db)
1	--
5	--
10	5
20	--
50	--
100	45
1 TO 10GHz	70



MARKING:  
 PART: SCI 1297-010  
 BLISTER PACK: SEE NOTE 1  
 SCI 1297-010  
 DATE CODE  
 LOT NO.  
 QTY.  
 044654

	6	5	4	3	2	1	0	REV. NO.	TOLERANCES UNLESS OTHERWISE SPECIFIED	 ERIE, FAIRVIEW PENNSYLVANIA SPECTRUM CONTROL INC.		
	CN 10646-CPD	CN 212504	CN 172413	CN 171365	CN 166199	CN 164363 REDRAWN	CN 149052	CHANGE NOTICE	Fractions $\pm$ 1/64		Dwn. KAUFFMAN	Description
									Dec. .xx $\pm$		Date 4-6-04	Pi, RESIN SEAL FILTER
									Dec. .xxx $\pm$ .015		Engr. K. Wood	
									Angles $\pm$ 0° 30'		Scale NONE	1297-010
									CODE IDENT. NO. DLSP2			