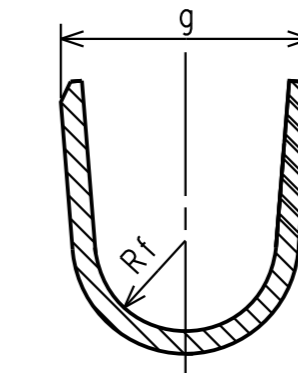
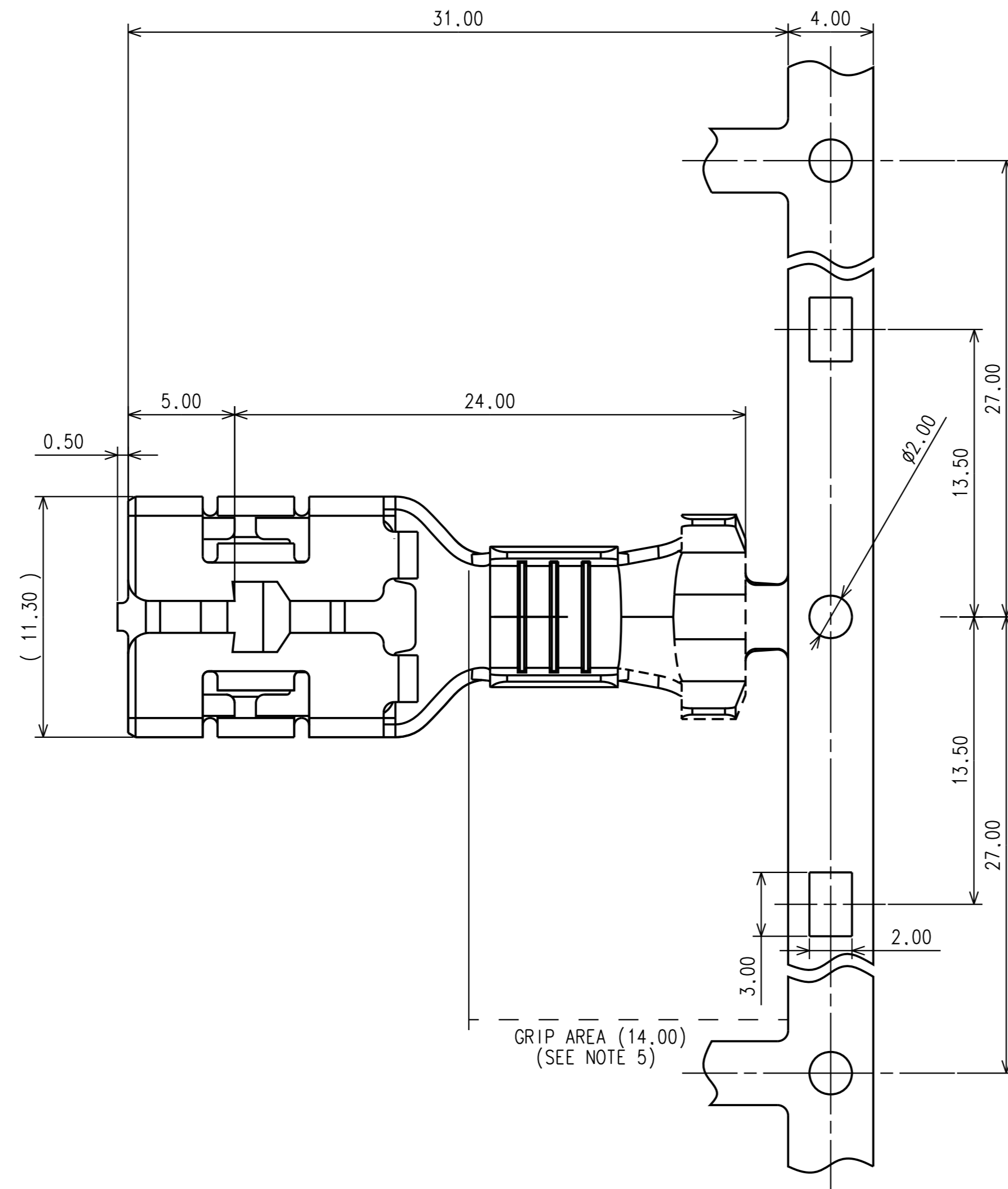
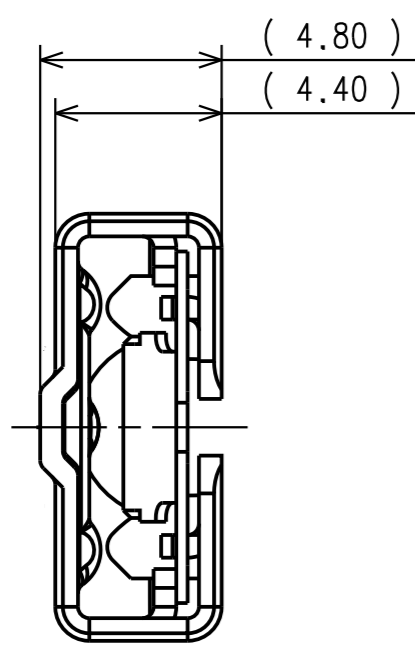
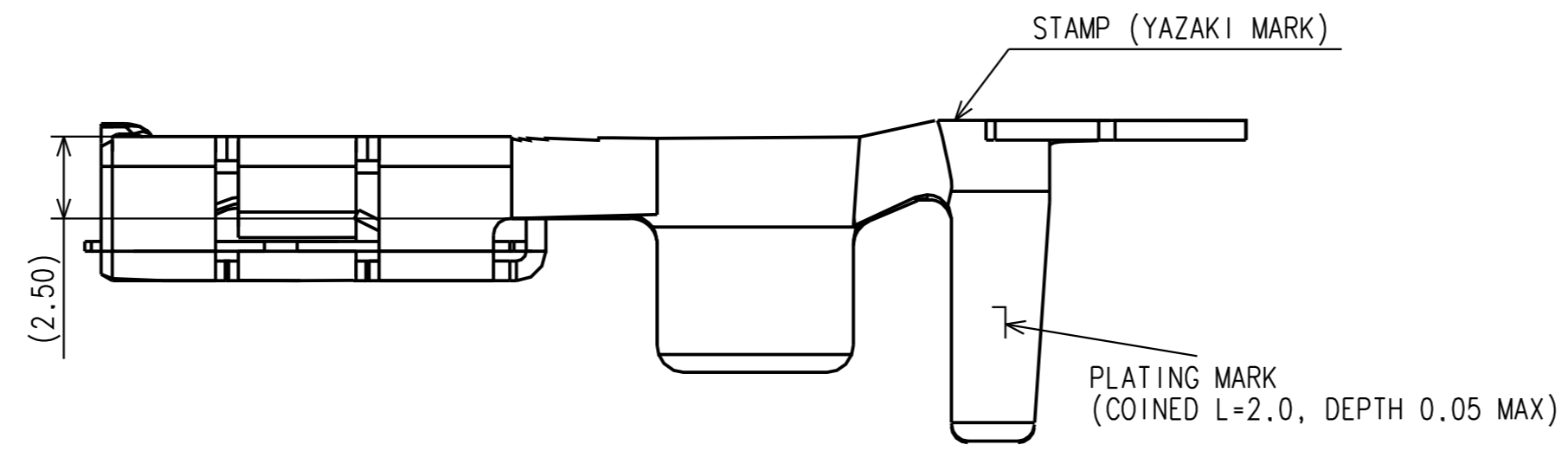
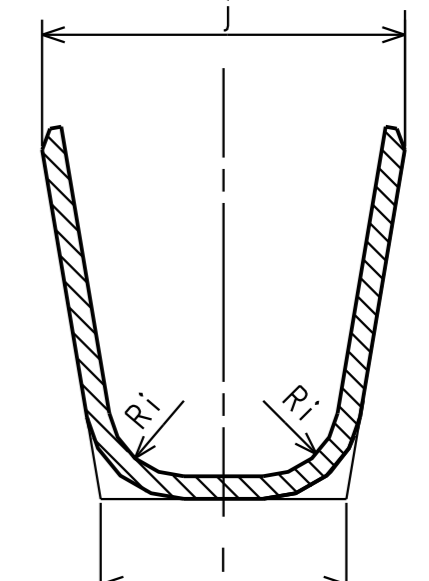


| | | | | | |
|--------------------------|------|------|------|------|-------------------------|
| PART NO. AND CH. CODE | f | g | i | j | APPLICABLE WIRE SIZE |
| 7116-3250-06 | 2.40 | 6.60 | 2.00 | 9.60 | AV5-8 |



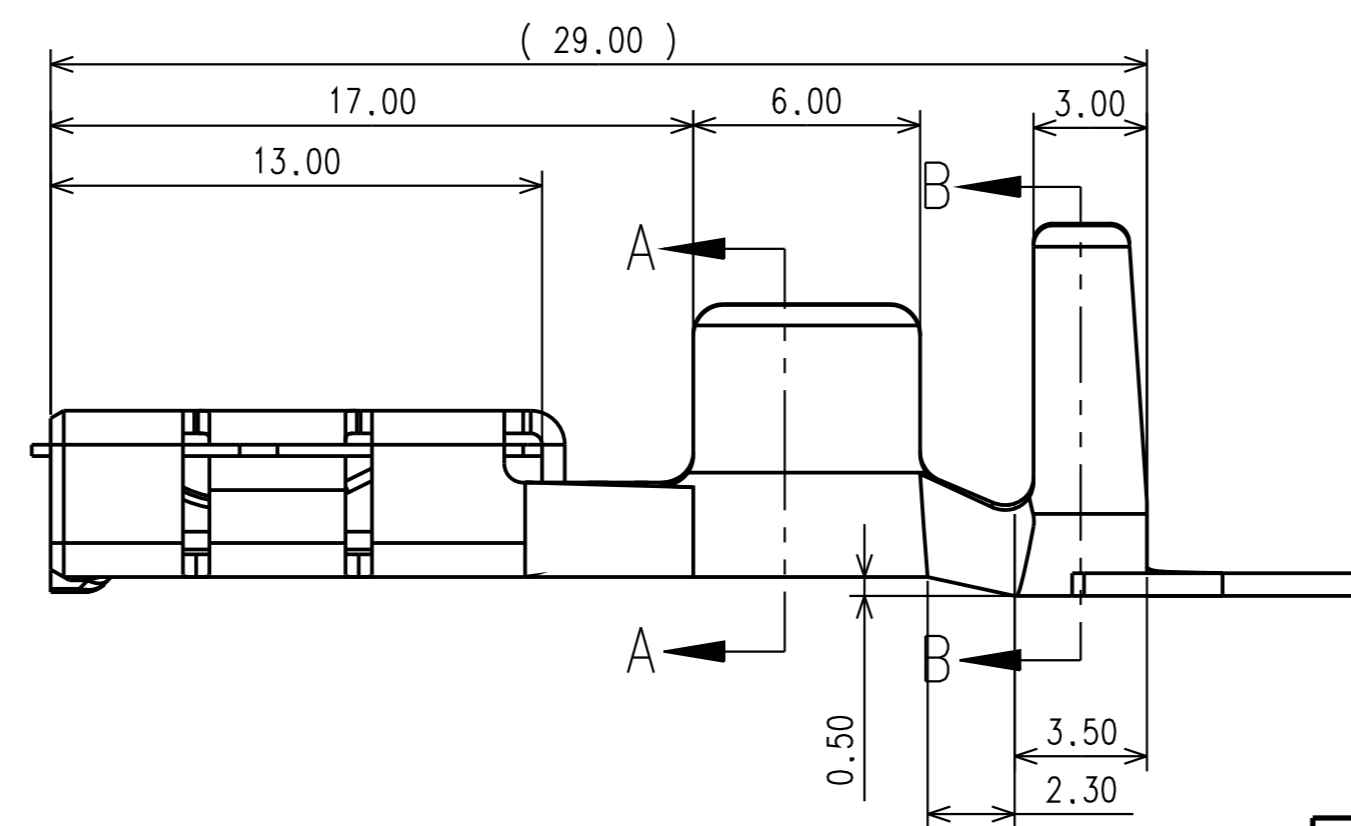
SECTION A-A



SECTION B-B

NOTES:

- PARTS MUST BE PURCHASED FROM YAZAKI.
- PARTS MUST BE FREE OF BURRS AND SHARP EDGES THAT MAY BE DETRIMENTAL TO SATISFACTORY ASSEMBLY, SAFE HANDLING, OR FUNCTION OF THE PART.
- MATING TERMINAL NUMBER: 7114-3250 ETC.
- MATERIAL: 1. TERMINAL - COPPER ALLOY
2. TERMINAL SPRING - STAINLESS STEEL
- PLATING: 1. COMPLETE TERMINAL - NICKEL PLATED
2. TERMINAL CONTACT AREA - SILVER PLATED
3. TERMINAL GRIP AREA - TIN PLATED
- GRIP CODE WILL NOT APPEAR ON THE PART.
- PART DESIGNED TO SATISFY USCAR-2, REV. 5, NOV. 2007, CLASS 3.
- PART TO COMPLY WITH YPES-31-038 REQUIREMENTS.
- THIS DRAWING IS TO BE USED FOR INTERNAL YAZAKI PSW SUBMISSION.



ISSUE MARK

| | | | | |
|-----|------------|-----------------|----------|------|
| LET | DATE | REVISION RECORD | NO. | CHKD |
| - | 12-12-2012 | NEW | C12-AA21 | MMR |

| GENERAL TOLERANCE | | | | | | | | | |
|-------------------|-------|-------|--------|--------|---------|-------|--------|----------|--------------|
| | 10MAX | 50MAX | 100MAX | 250MAX | 250 OVR | ANGLE | ECCENT | DWG TYPE | DWG SOURCE |
| A | ±0.15 | ±0.2 | ±0.3 | ±0.5 | ±0.75 | ±30' | 0.1 | R | NEW |
| B | ±0.2 | ±0.3 | ±0.55 | ±0.95 | ±1.4 | ±30' | 0.1 | APPROVED | CHECKED |
| © | ±0.3 | ±0.5 | ±0.8 | ±1.4 | ±2 | ±30' | 0.15 | CHECKED | DESIGN |
| SPECIFIED | | | | | | | | | DRAWN |
| | | | | | | | | | C. PARDO |
| | | | | | | | | | 03-23-2011 |
| | | | | | | | | | MASS (3.47g) |

| | | | | | | |
|------------|-------------------|------------------|-----------------------------|----------------|---------------|-----------|
| CUSTOMER | CUSTOMER PART NO. | CUSTOMER DWG NO. | MATL. SPEC. | SEE NOTES | TREAT. & FIN. | SEE NOTES |
| OFFICE | | TRIAL PART NO. | NAME L TYPE FEMALE TERMINAL | | | |
| VENDOR | | X31016-AP81 | | | | |
| VENDOR NO. | | | | | | |
| | | | PART NO. | 7116-3250-06 | | |
| | | | CH. CODE | 7116-3250-06:R | | |
| | | | DWG NO. | 7116-3250-06:R | | |
| | | | YAZAKI CORPORATION | | | |