

ADS912x 16-Bit, 20MSPS SAR ADCs With Fully Differential ADC Input Driver

1 Features

- High-speed and low-power:
 - ADS9129: 20MSPS, 274mW
 - ADS9128: 10MSPS, 83mW
 - ADS9127: 5MSPS, 59mW
- Feature integration:
 - Integrated ADC driver
 - Integrated precision reference
 - Common-mode voltage output buffer
- High performance:
 - 16-bit no missing codes
 - INL: ± 0.3 LSB, DNL: ± 0.3 LSB
 - SNR: 93.9dB
- Wide input bandwidth:
 - ADS9129 and ADS9128: 90MHz (–3dB)
 - ADS9127: 45MHz (–3dB)
- Serial LVDS interface:
 - SDR and DDR output modes
 - Synchronous clock and data output
- Extended operating range: -40°C to $+125^{\circ}\text{C}$

2 Applications

- [Power analyzers](#)
- [Source measurement units \(SMU\)](#)
- [Marine equipment](#)
- [Servo drive position feedback](#)
- [DC power supplies, AC sources, electronic loads](#)

3 Description

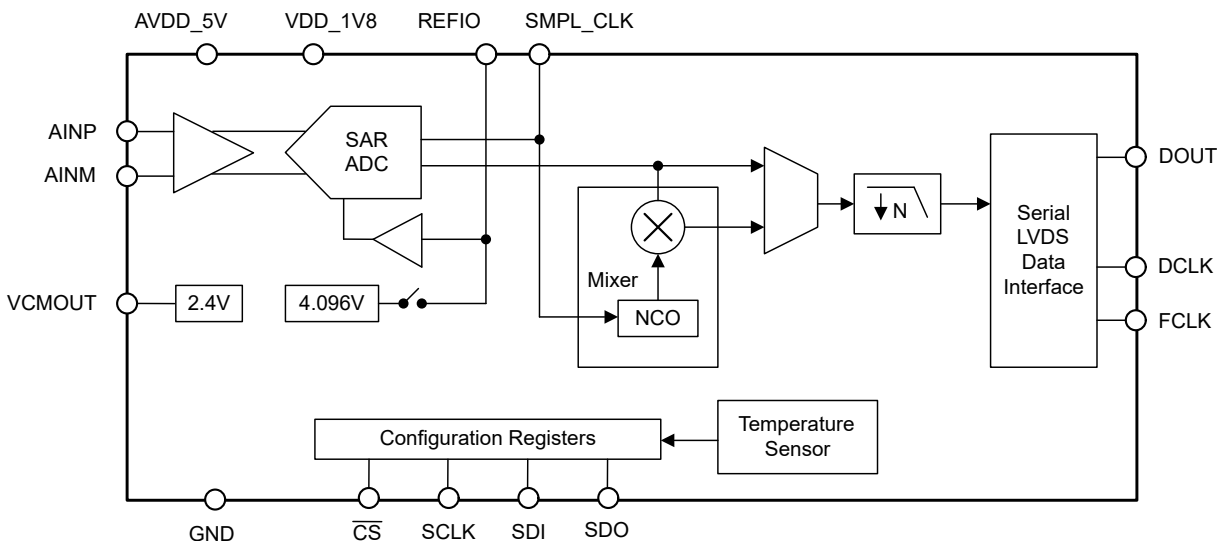
The ADS912x is a family of 16-bit, high-speed, analog-to-digital converters (ADCs) with an integrated driver for the ADC inputs. The integrated ADC driver simplifies the signal chain, reduces power consumption for precision applications, and supports high-frequency signals beyond 1MHz. By not requiring an external decoupling capacitor, the integrated ADC reference buffer is optimized for wide bandwidth applications.

The ADS912x uses a serial LVDS (SLVDS) data interface that enables high-speed digital communication while minimizing digital switching noise. Read the ADC data using separate SLVDS outputs per ADC channel or one SLVDS output for both ADC channels.

Package Information

| PART NUMBER | PACKAGE ⁽¹⁾ | PACKAGE SIZE ⁽²⁾ |
|---------------------------|------------------------|-----------------------------|
| ADS9129, ADS9128, ADS9127 | RHA (VQFN, 40) | 6mm × 6mm |

- (1) For more information, see the [Mechanical, Packaging, and Orderable Information](#).
- (2) The package size (length × width) is a nominal value and includes pins, where applicable.



Device Block Diagram

Table of Contents

| | | | |
|--|----|--|----|
| 1 Features | 1 | 6.5 Programming..... | 28 |
| 2 Applications | 1 | 7 Register Map | 32 |
| 3 Description | 1 | 7.1 Register Bank 0..... | 32 |
| 4 Pin Configuration and Functions | 3 | 7.2 Register Bank 1 | 35 |
| 5 Specifications | 5 | 7.3 Register Bank 2..... | 49 |
| 5.1 Absolute Maximum Ratings..... | 5 | 8 Application and Implementation | 50 |
| 5.2 ESD Ratings..... | 5 | 8.1 Application Information..... | 50 |
| 5.3 Recommended Operating Conditions..... | 6 | 8.2 Typical Applications..... | 50 |
| 5.4 Thermal Information..... | 6 | 8.3 Power Supply Recommendations..... | 54 |
| 5.5 Electrical Characteristics..... | 7 | 8.4 Layout..... | 55 |
| 5.6 Timing Requirements..... | 9 | 9 Device and Documentation Support | 56 |
| 5.7 Switching Characteristics..... | 10 | 9.1 Documentation Support..... | 56 |
| 5.8 Timing Diagrams..... | 11 | 9.2 Receiving Notification of Documentation Updates...56 | 56 |
| 5.9 Typical Characteristics: All Devices..... | 13 | 9.3 Support Resources..... | 56 |
| 5.10 Typical Characteristics: ADS9129..... | 15 | 9.4 Trademarks..... | 56 |
| 5.11 Typical Characteristics: ADS9128..... | 16 | 9.5 Electrostatic Discharge Caution..... | 56 |
| 5.12 Typical Characteristics: ADS9127..... | 17 | 9.6 Glossary..... | 56 |
| 6 Detailed Description | 18 | 10 Revision History | 56 |
| 6.1 Overview..... | 18 | 11 Mechanical, Packaging, and Orderable Information | 56 |
| 6.2 Functional Block Diagram..... | 18 | 11.1 Mechanical Data..... | 57 |
| 6.3 Feature Description..... | 19 | | |
| 6.4 Device Functional Modes..... | 27 | | |

4 Pin Configuration and Functions

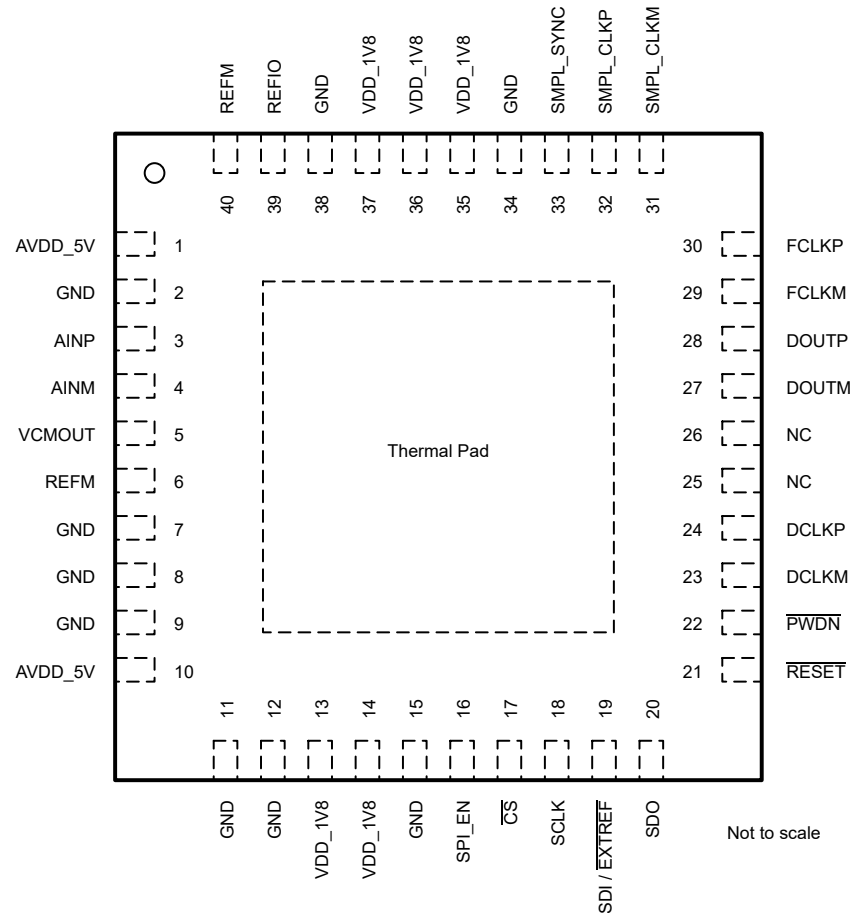


Figure 4-1. RHA Package, 6mm × 6mm, 40-Pin VQFN (Top View)

Pin Functions

| PIN | | TYPE ⁽¹⁾ | DESCRIPTION |
|---------|-------|---------------------|---|
| NAME | NO. | | |
| AINM | 4 | I | Negative analog input for ADC. |
| AINP | 3 | I | Positive analog input for ADC. |
| AVDD_5V | 1, 10 | P | 5V analog power-supply pin. |
| CS | 17 | I | Chip-select input pin for the interface configuration; active low. |
| DCLKM | 23 | O | Negative differential data clock output. Connect a 100Ω resistor between DCLKP and DCLKM close to the receiver. |
| DCLKP | 24 | O | Positive differential data clock output. Connect a 100Ω resistor between DCLKP and DCLKM close to the receiver. |

Pin Functions (continued)

| PIN | | TYPE ⁽¹⁾ | DESCRIPTION |
|-------------|--------------------------------|---------------------|---|
| NAME | NO. | | |
| DOUTM | 27 | O | Negative differential data output. Connect a 100Ω resistor between DOUTP and DOUTM close to the receiver. |
| DOUTP | 28 | O | Positive differential data output. Connect a 100Ω resistor between DOUTP and DOUTM close to the receiver. |
| FCLKM | 29 | O | Negative differential data frame clock output. Connect a 100Ω resistor between FCLKP and FCLKM close to the receiver. |
| FCLKP | 30 | O | Positive differential data frame clock output. Connect a 100Ω resistor between FCLKP and FCLKM close to the receiver. |
| GND | 2, 7, 8, 9, 11, 12, 15, 34, 38 | P | Ground. |
| NC | 25, 26 | – | No external connection. Leave floating. |
| PWDN | 22 | I | Power-down control; active low. Connect to VDD_1V8 if unused. |
| REFIO | 39 | I/O | Internal reference voltage output. External reference voltage input. Connect a 10μF decoupling capacitor to REFM. |
| REFM | 6, 40 | P | Reference ground. Connect to GND. |
| RESET | 21 | I | Reset input; active low. Connect to VDD_1V8 if unused. |
| SCLK | 18 | I | Serial clock input for the interface configuration. |
| SDI/EXTREF | 19 | I | SDI is a multifunction logic input; pin function is determined by the SPI_EN pin. SDI has an internal 100kΩ pulldown resistor to GND. SPI_EN = 0b: SDI is the logic input to select between the internal or external reference. Connect SDI to GND for the external reference. Connect SDI to IOVDD for the internal reference. SPI_EN = 1b: Serial data input for the interface configuration. |
| SDO | 20 | O | Serial data output for the configuration interface. |
| SMPL_CLKM | 31 | I | ADC sampling clock input. Negative differential input for the LVDS sampling clock. Connect this pin to GND for the CMOS sampling clock. |
| SMPL_CLKP | 32 | I | ADC sampling clock input. Positive differential input for the LVDS sampling clock. Clock input for the CMOS sampling clock. |
| SMPL_SYNC | 33 | I | Synchronization input for internal averaging filter. Connect to GND if unused. See the Synchronizing Multiple ADCs section on how to use the SMPL_SYNC pin. |
| SPI_EN | 16 | I | Control to enable the SPI configuration; active high. Connect a pullup resistor to VDD_1V8 to keep the configuration interface enabled. Connect to GND if the SPI configuration is unused. |
| Thermal Pad | — | P | Exposed thermal pad. Connect to GND. |
| VCMOUT | 5 | O | Common-mode voltage output. Use VCMOUT to set the common-mode voltage at the ADC inputs. Connect a 1μF decoupling capacitor to GND. |
| VDD_1V8 | 13, 14, 35, 36, 37 | P | 1.8V power-supply. Connect 1μF and 0.1μF decoupling capacitors to GND. |

(1) I = input, O = output, I/O = input or output, G = ground, P = power.

5 Specifications

5.1 Absolute Maximum Ratings

over operating ambient temperature range (unless otherwise noted)⁽¹⁾

| | MIN | MAX | UNIT |
|--|------------|---------------|------|
| VDD_1V8 to GND | -0.3 | 2.1 | V |
| AVDD_5V to GND | -0.3 | 5.5 | V |
| AINP and AINM to GND | -0.3 | AVDD_5V + 0.3 | V |
| REFIO to REFM | REFM - 0.3 | AVDD_5V + 0.3 | V |
| Digital inputs to GND | -0.3 | VDD_1V8 + 0.3 | V |
| REFM to GND | -0.3 | 0.3 | V |
| Input current to any pin except supply pins ⁽²⁾ | -10 | 10 | mA |
| Junction temperature, T _J | -40 | 150 | °C |
| Storage temperature, T _{stg} | -60 | 150 | °C |

- (1) Operation outside the *Absolute Maximum Ratings* may cause permanent device damage. *Absolute Maximum Ratings* do not imply functional operation of the device at these or any other conditions beyond those listed under *Recommended Operating Conditions*. If used outside the *Recommended Operating Conditions* but within the *Absolute Maximum Ratings*, the device may not be fully functional, and this may affect device reliability, functionality, performance, and shorten the device lifetime.
- (2) Pin current must be limited to 10mA or less.

5.2 ESD Ratings

| | | VALUE | UNIT |
|--------------------|-------------------------|---|-------|
| V _(ESD) | Electrostatic discharge | Human body model (HBM), per ANSI/ESDA/ JEDEC JS-001, analog input pins AINP and AINM ⁽¹⁾ | ±2000 |
| | | Human body model (HBM), per ANSI/ESDA/ JEDEC JS-001, all other pins ⁽¹⁾ | ±1000 |
| | | Charged device model (CDM), per ANSI/ESDA/ JEDEC JS-002, all pins ⁽²⁾ | ±500 |

- (1) JEDEC document JEP155 states that 500V HBM allows safe manufacturing with a standard ESD control process.
- (2) JEDEC document JEP157 states that 250V CDM allows safe manufacturing with a standard ESD control process.

5.3 Recommended Operating Conditions

over operating free-air temperature range (unless otherwise noted)

| PARAMETER | | TEST CONDITIONS | MIN | TYP | MAX | UNIT |
|--------------------------|--|----------------------|---------------------------|-------|---------------------------|------|
| POWER SUPPLY | | | | | | |
| AVDD_5V | Analog power supply AVDD_5V to GND | ADS9127 | 4.5 | 5 | 5.5 | V |
| | | ADS9128, ADS9129 | 4.75 | 5 | 5.25 | |
| VDD_1V8 | Power supply | VDD_1V8 to GND | 1.75 | 1.8 | 1.85 | V |
| REFERENCE VOLTAGE | | | | | | |
| V _{REF} | Reference voltage to the ADC | External reference | 4.076 | 4.096 | 4.116 | V |
| ANALOG INPUTS | | | | | | |
| V _{IN} | Absolute input voltage | AINP and AINM to GND | V _{CM} – 1.6 | | V _{CM} + 1.6 | V |
| FSR | Full-scale input range | AINP – AINM | –3.2 | | 3.2 | V |
| V _{CM} | Common-mode input range ⁽¹⁾ | (AINP + AINM) / 2 | V _{CMOUT} – 0.07 | | V _{CMOUT} + 0.07 | V |
| TEMPERATURE RANGE | | | | | | |
| T _A | Ambient temperature | | –40 | 25 | 125 | °C |

(1) ADC channel is powered down if the input common-mode voltage exceeds specifications.

5.4 Thermal Information

| THERMAL METRIC ⁽¹⁾ | | ADS912x | UNIT |
|-------------------------------|--|------------|------|
| | | RHA (VQFN) | |
| | | 40 PINS | |
| R _{θJA} | Junction-to-ambient thermal resistance | 25.8 | °C/W |
| R _{θJC(top)} | Junction-to-case (top) thermal resistance | 13.3 | °C/W |
| R _{θJB} | Junction-to-board thermal resistance | 7.5 | °C/W |
| Ψ _{JT} | Junction-to-top characterization parameter | 0.1 | °C/W |
| Ψ _{JB} | Junction-to-board characterization parameter | 7.4 | °C/W |
| R _{θJC(bot)} | Junction-to-case (bottom) thermal resistance | 1.1 | °C/W |

(1) For more information about traditional and new thermal metrics, see the [Semiconductor and IC Package Thermal Metrics](#) application note.

5.5 Electrical Characteristics

at AVDD_5V = 4.75V to 5.25V for ADS9129, and ADS9128, and AVDD_5V = 4.5V to 5.5V for ADS9127, VDD_1V8 = 1.75V to 1.85V, internal V_{REF} = 4.096V, and maximum throughput (unless otherwise noted); minimum and maximum values at T_A = –40°C to +125°C; typical values at T_A = 25°C

| PARAMETER | | TEST CONDITIONS | MIN | TYP | MAX | UNIT |
|----------------------------------|---|---|-------|-------|------|-------------------|
| ANALOG INPUTS | | | | | | |
| I _B | Input bias current | | | 0.1 | | nA |
| | Input bias current thermal drift | T _A = 0°C to 70°C | | 0.02 | | nA/°C |
| | | T _A = –40°C to 125°C | | 0.1 | | |
| DC PERFORMANCE | | | | | | |
| | Resolution | No missing codes | | 16 | | Bits |
| DNL | Differential nonlinearity | | –0.9 | ±0.3 | 0.9 | LSB |
| INL | Integral nonlinearity | T _A = °C to 70°C, all devices | –0.4 | ±0.3 | 0.4 | LSB |
| | | ADS9128, ADS9127 | –0.75 | ±0.3 | 0.75 | |
| | | ADS9129 | –1 | ±0.3 | 1 | |
| V _(OS) | Input offset error | | | ±10 | | LSB |
| dV _{OS} /dT | Input offset error thermal drift | | | 0.25 | 1 | ppm/°C |
| G _E | Gain error ⁽¹⁾ | | –0.05 | ±0.01 | 0.05 | %FSR |
| dG _E /dT | Gain error thermal drift ⁽¹⁾ | | | 0.5 | 2 | ppm/°C |
| AC PERFORMANCE | | | | | | |
| SINAD | Signal-to-noise + distortion ratio | f _{IN} = 2kHz | 92 | 93.8 | | dB |
| | | f _{IN} = 1MHz | | 92.9 | | |
| SNR | Signal-to-noise ratio | f _{IN} = 2kHz | 92.3 | 93.9 | | dBFS |
| | | f _{IN} = 1MHz | | 93.3 | | |
| THD | Total harmonic distortion | f _{IN} = 2kHz | | –120 | | dB |
| | | f _{IN} = 1MHz | | –104 | | |
| SFDR | Spurious-free dynamic range | f _{IN} = 2kHz | | 120 | | dB |
| | | f _{IN} = 1MHz | | 104 | | |
| | Isolation crosstalk | f _{IN} = 2kHz | | 120 | | dB |
| SAMPLING DYNAMICS | | | | | | |
| | Aperture Jitter | Single-ended CMOS clock on SMPL_CLKP | | 0.3 | | ps _{RMS} |
| | | Differential LVDS sampling clock | | 0.8 | | |
| BW | Input-bandwidth | ADS9129, ADS9128 | | 90 | | MHz |
| | | ADS9127 | | 45 | | |
| INTERNAL REFERENCE | | | | | | |
| V _{REF} ⁽²⁾ | Voltage on REFIO pin (configured as output) | 1μF capacitor on REFIO pin, T _A = 25°C | 4.092 | 4.096 | 4.1 | V |
| | Reference temperature drift | | | 6 | 20 | ppm/°C |
| COMMON-MODE OUTPUT BUFFER | | | | | | |
| V _{CMOUT} | Common-mode output voltage | ADS9129 | 2.2 | 2.460 | 2.65 | V |
| | | ADS9128 | 2.2 | 2.410 | 2.65 | |
| | | ADS9127 | 2.2 | 2.385 | 2.65 | |
| | Output current drive | | 0 | | 5 | μA |
| LVDS RECEIVER (SMPL_CLK) | | | | | | |
| V _{TH} | High-level input voltage (P – M) | AC coupled | 100 | | | mV |
| | | DC coupled | 300 | | | |

5.5 Electrical Characteristics (continued)

at AVDD_5V = 4.75V to 5.25V for ADS9129, and ADS9128, and AVDD_5V = 4.5V to 5.5V for ADS9127, VDD_1V8 = 1.75V to 1.85V, internal V_{REF} = 4.096V, and maximum throughput (unless otherwise noted); minimum and maximum values at T_A = –40°C to +125°C; typical values at T_A = 25°C

| PARAMETER | | TEST CONDITIONS | MIN | TYP | MAX | UNIT |
|--|---------------------------------|---------------------------------|------|---------|------|------|
| V _{TL} | Low-level input voltage (P – M) | AC coupled | | | –100 | mV |
| | | DC coupled | | | –300 | |
| V _{ICM} | Input common-mode voltage | | 0.5 | 1.2 | 1.4 | V |
| LVDS OUTPUT (CLKOUT and DOUT) | | | | | | |
| V _{ODIFF} | Differential output voltage | R _L = 100Ω | 200 | 350 | 500 | mV |
| V _{OCM} | Output common-mode voltage | R _L = 100Ω | 0.88 | 1.1 | 1.32 | V |
| CMOS INPUTS (\overline{CS}, SCLK, and SDI) | | | | | | |
| V _{IL} | Input low logic level | | –0.1 | | 0.5 | V |
| V _{IH} | Input high logic level | | 1.3 | VDD_1V8 | | V |
| CMOS OUTPUT (SDO) | | | | | | |
| V _{OL} | Output low logic level | I _{OL} = 200μA sink | 0 | | 0.4 | V |
| V _{OH} | Output high logic level | I _{OH} = 200μA source | 1.4 | VDD_1V8 | | V |
| POWER SUPPLY | | | | | | |
| I _{AVDD_5V} | Supply current from AVDD_5V | at 20 MSPS throughput (ADS9129) | | 31 | 34 | mA |
| | | At 10 MSPS throughput (ADS9128) | | 17 | 21 | |
| | | At 5 MSPS throughput (ADS9127) | | 10 | 13 | |
| | | Power-down | | | 2 | |
| I _{VDD_1V8} | Supply current from VDD_1V8 | at 20 MSPS throughput (ADS9129) | | 66 | 69 | mA |
| | | At 10 MSPS throughput (ADS9128) | | 45 | 47 | |
| I _{VDD_1V8} | Supply current from VDD_1V8 | At 5 MSPS throughput (ADS9127) | | 37.5 | 41 | |
| | | Power-down | | | 2 | |

- (1) These specifications include full temperature range variation but not the error contribution from internal reference.
- (2) Does not include the variation in voltage resulting from solder shift effects.

5.6 Timing Requirements

at AVDD_5V = 4.75V to 5.25V for ADS9129, and ADS9128, and AVDD_5V = 4.5V to 5.5V for ADS9127, VDD_1V8 = 1.75V to 1.85V, internal V_{REF} = 4.096V, and maximum throughput (unless otherwise noted); minimum and maximum values at T_A = –40°C to +125°C; typical values at T_A = 25°C

| | | MIN | MAX | UNIT | |
|-------------------------|---|------------------------|------|--------------------|-----|
| CONVERSION CYCLE | | | | | |
| f _{CYCLE} | Sampling frequency | ADS9129 | 7 | 20 | MHz |
| | | ADS9128 | 3.9 | 10 | |
| | | ADS9127 | 3.9 | 5 | |
| t _{CYCLE} | ADC cycle time period | 1 / f _{CYCLE} | | s | |
| t _{PL_SMPCLK} | Sample clock low time | 0.4 | 0.6 | t _{CYCLE} | |
| t _{PH_SMPCLK} | Sample clock high time | 0.4 | 0.6 | t _{CYCLE} | |
| f _{CLK} | Maximum SCLK frequency | | 10 | MHz | |
| t _{CLK} | Minimum SCLK time period | 100 | | ns | |
| SPI TIMINGS | | | | | |
| t _{hi_CSZ} | Pulse duration: \overline{CS} high | 220 | | ns | |
| t _{PH_CK} | SCLK high time | 0.48 | 0.52 | t _{CLK} | |
| t _{PL_CK} | SCLK low time | 0.48 | 0.52 | t _{CLK} | |
| t _{d_CSCK} | Setup time: \overline{CS} falling to the first SCLK rising edge | 20 | | ns | |
| t _{su_CKDI} | Setup time: SDI data valid to the corresponding SCLK rising edge | 10 | | ns | |
| t _{ht_CKDI} | Hold time: SCLK rising edge to corresponding data valid on SDI | 5 | | ns | |
| t _{d_CKCS} | Delay time: last SCLK falling edge to \overline{CS} rising | 5 | | ns | |

5.7 Switching Characteristics

at AVDD_5V = 4.75V to 5.25V for ADS9129, and ADS9128, and AVDD_5V = 4.5V to 5.5V for ADS9127, VDD_1V8 = 1.75V to 1.85V, internal V_{REF} = 4.096V, and maximum throughput (unless otherwise noted); minimum and maximum values at T_A = –40°C to +125°C; typical values at T_A = 25°C

| PARAMETER | TEST CONDITIONS | MIN | MAX | UNIT | |
|----------------------------|--|---|------------------------------|------------------------------|----|
| RESET | | | | | |
| t _{PU} | Power-up time for device | | 25 | ms | |
| LVDS DATA INTERFACE | | | | | |
| t _{RT} | Rise time | With 50Ω transmission line of length = 20mm, differential R _L = 100Ω, and C _L = 1pF | 600 | ps | |
| t _{FT} | Fall time | | 600 | ps | |
| t _{CYCLE} | Sampling clock period | ADS9129 | 50 | ns | |
| | | ADS9128 | 100 | | |
| | | ADS9127 | 200 | | |
| t _{DCLK} | Clock output | | 4.167 | ns | |
| | Clock duty cycle | | 45 | 55 | % |
| t _{d_DCLKDO} | Time delay: DCLKP rising to corresponding data valid | SDR mode | –0.35 | 0.35 | ns |
| t _{off_DCLKDO_r} | Time offset: DCLKP rising to corresponding data valid | DDR mode | t _{DCLK} / 4 – 0.35 | t _{DCLK} / 4 + 0.35 | ns |
| t _{off_DCLKDO_f} | Time offset: DCLKP falling to corresponding data valid | DDR mode | t _{DCLK} / 4 – 0.35 | t _{DCLK} / 4 + 0.35 | ns |
| t _{PD} | Time delay: SMPL_CLK falling to DCLKP rising | | | t _{DCLK} | ns |
| t _{PU_SMPL_CLK} | Time delay: Free-running clock connected to SMPL_CLK to ADC data valid | | | 100 | μs |
| t _{LAT} (1) | Time delay: Internal digital delay to MSB of data output | | 3 | 12 | ns |
| SPI TIMINGS | | | | | |
| t _{den_CKDO} | Time delay: 8 th SCLK rising edge to SDO enable | | | 30 | ns |
| t _{dz_CKDO} | Time delay: 24 th SCLK rising edge to SDO going Hi-Z | | | 30 | ns |
| t _{d_CKDO} | Time delay: SCLK launch edge to corresponding data valid on SDO | | | 30 | ns |
| t _{hL_CKDO} | Hold time: SCLK launch edge to previous data valid on SDO | | 2 | | ns |

(1) See section on *ADC Sampling Clock Input* for more details on data output latency.

5.8 Timing Diagrams

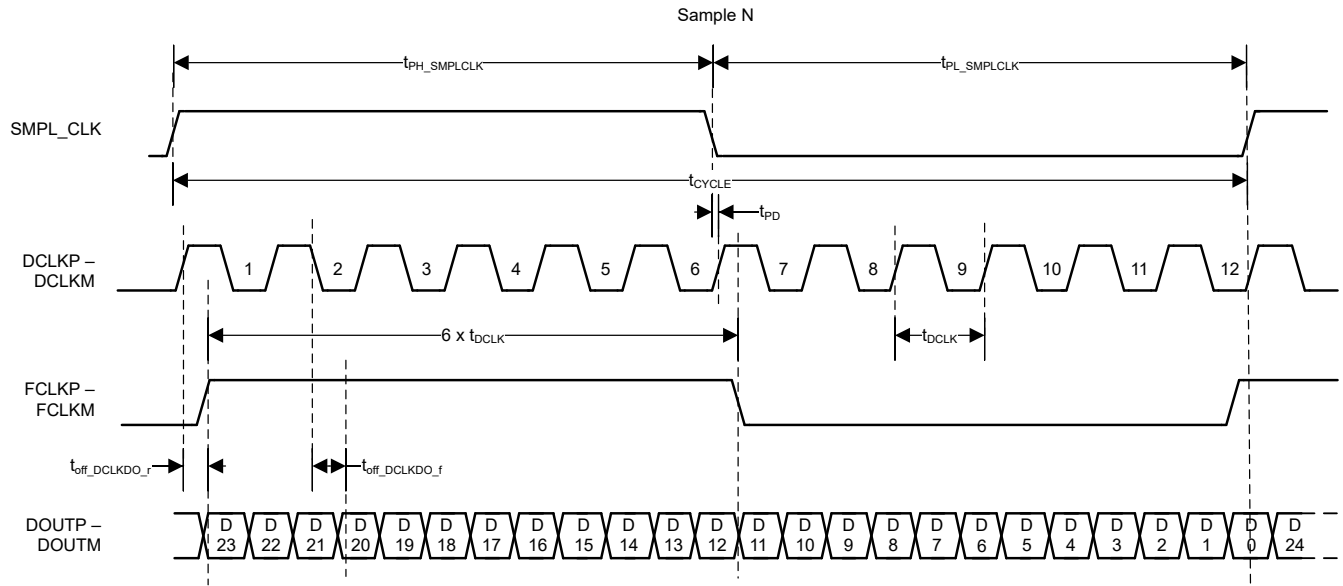


Figure 5-1. LVDS Data Interface: DDR

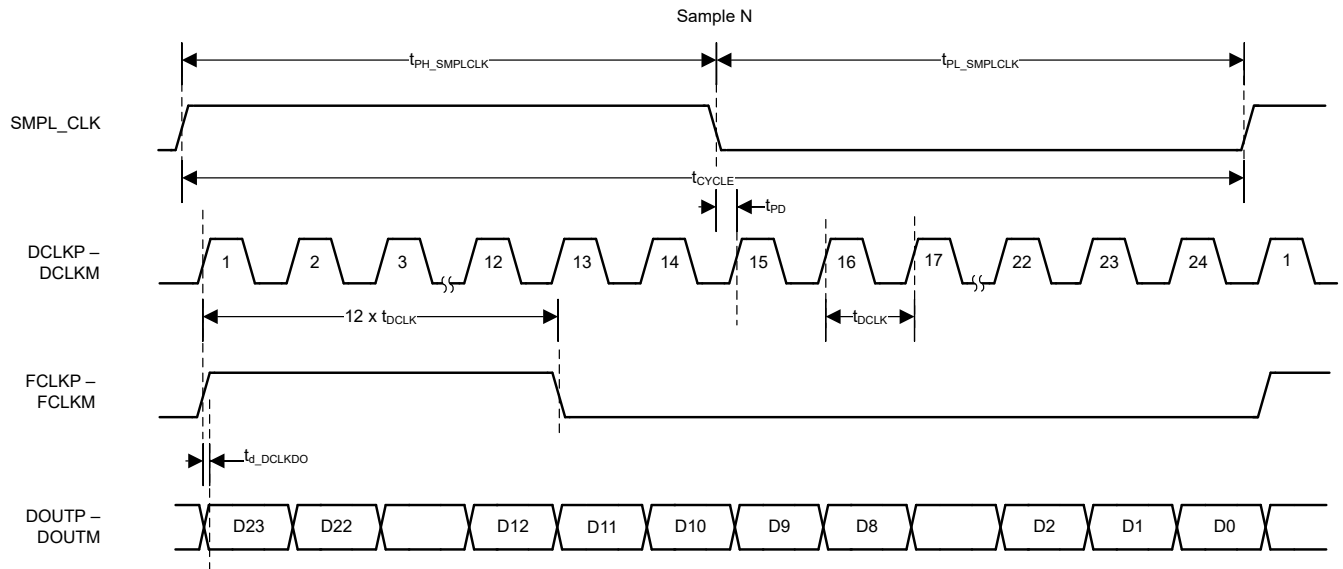


Figure 5-2. LVDS Data Interface: SDR

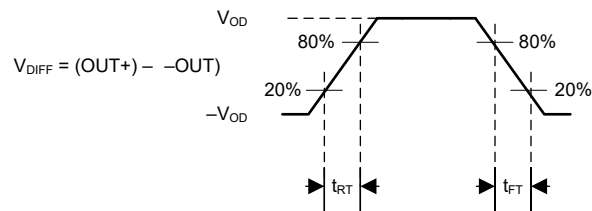


Figure 5-3. LVDS Output Transition Times

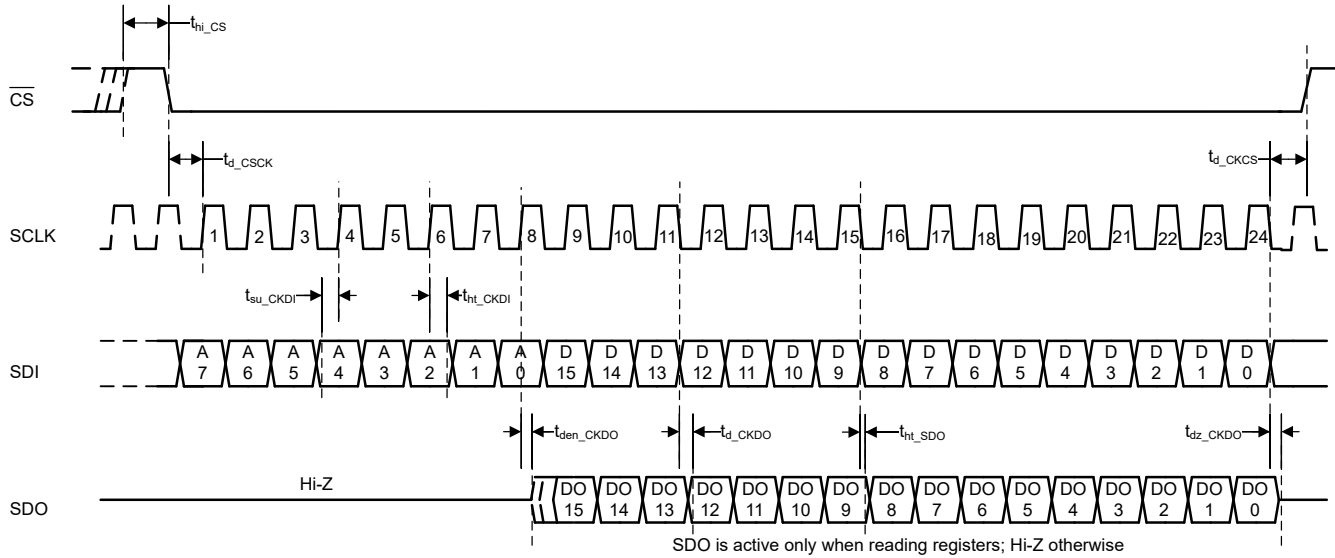


Figure 5-4. Configuration SPI

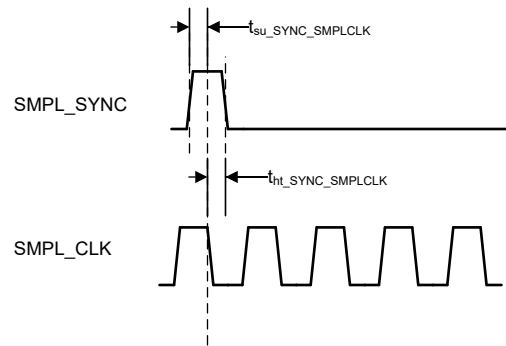
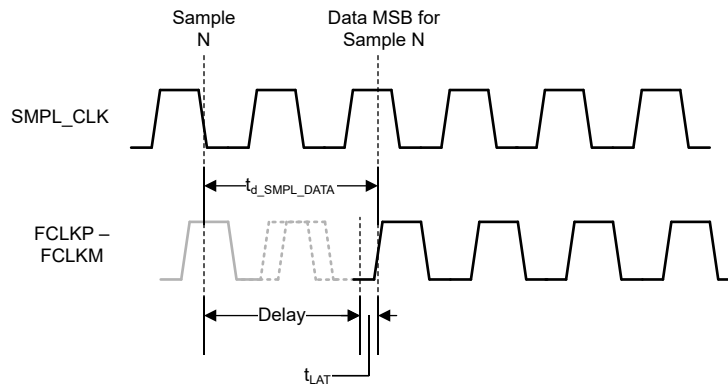


Figure 5-5. SMPL_SYNC Timing

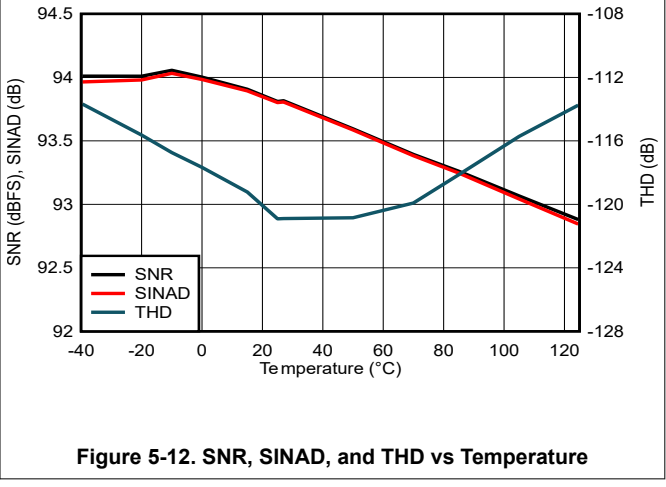
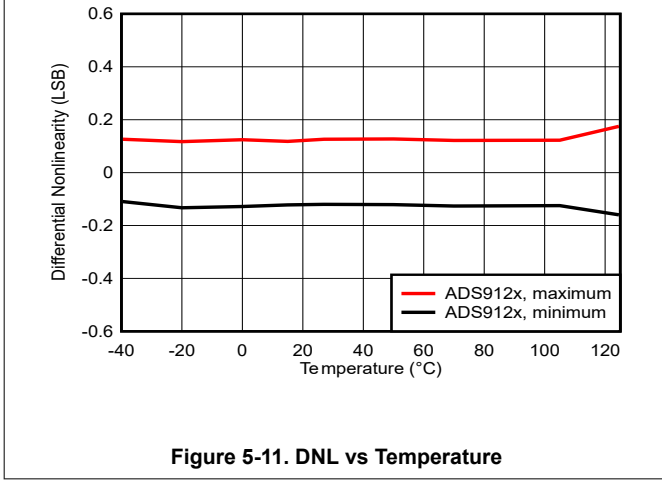
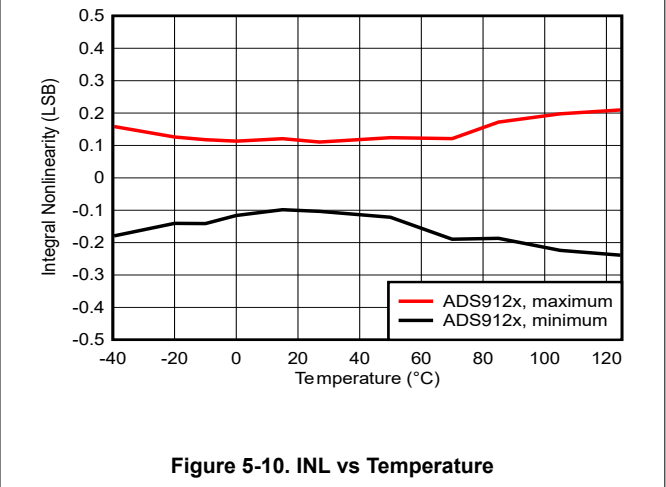
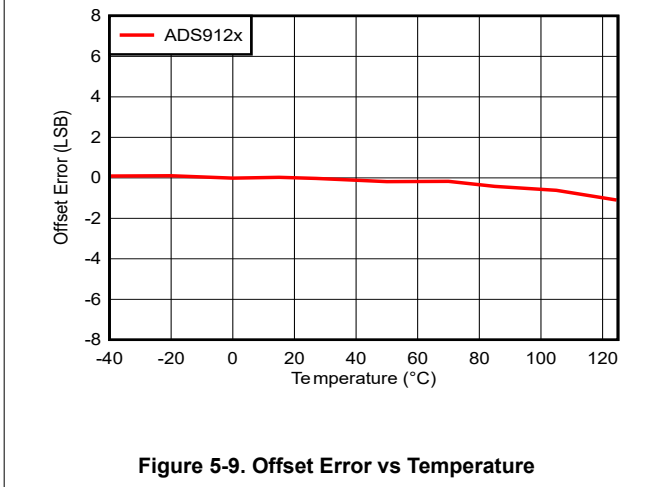
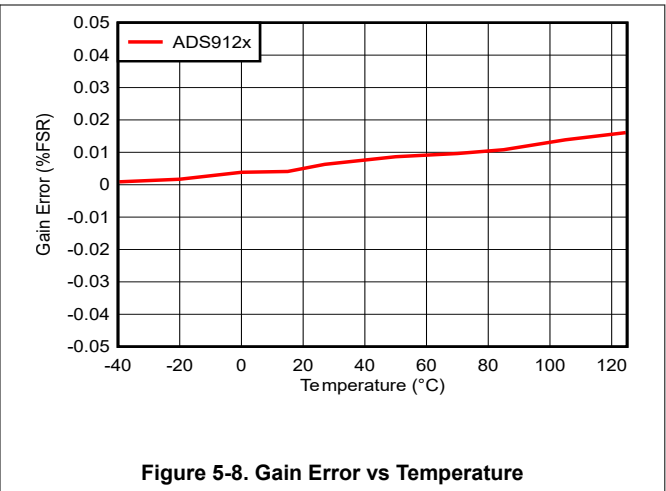
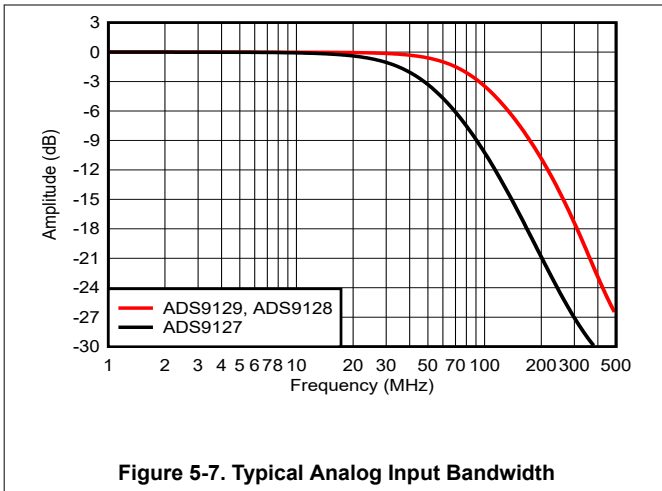


1. See the [ADC Sampling Clock Input](#) section for more details.

Figure 5-6. Sampling Edge to Corresponding Data MSB Output Timing

5.9 Typical Characteristics: All Devices

at $T_A = 25^\circ\text{C}$, $AVDD_{5V} = 5V$, $VDD_{1V8} = 1.8V$, external $V_{REF} = 4.096V$, and maximum throughput (unless otherwise noted)



5.9 Typical Characteristics: All Devices (continued)

at $T_A = 25^\circ\text{C}$, $AVDD_5V = 5V$, $VDD_1V8 = 1.8V$, external $V_{REF} = 4.096V$, and maximum throughput (unless otherwise noted)

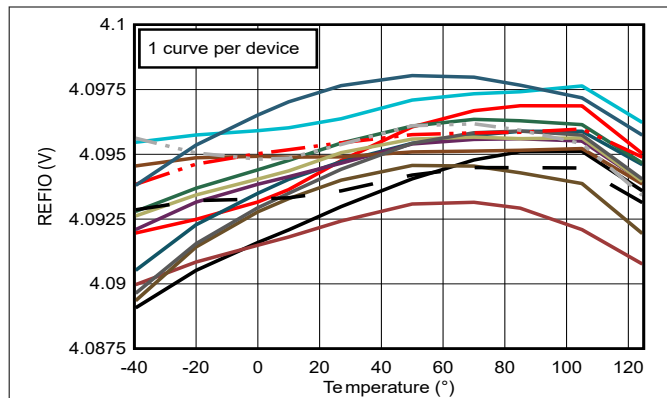


Figure 5-13. REFIO Voltage vs Temperature

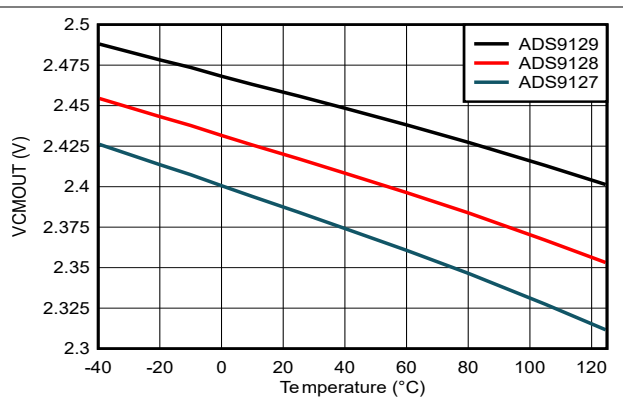


Figure 5-14. V_{CMOUT} Voltage vs Temperature

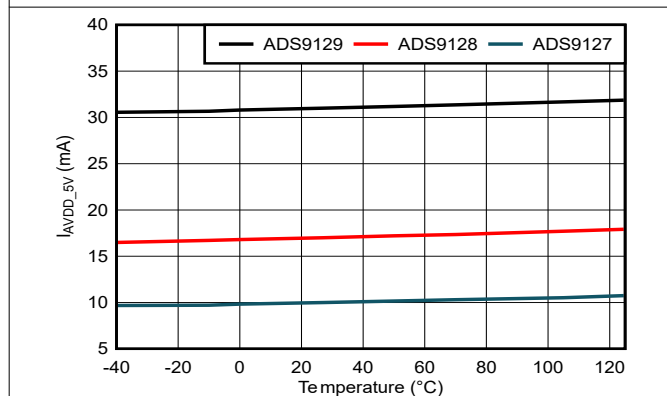


Figure 5-15. AVDD_5V Current vs Temperature

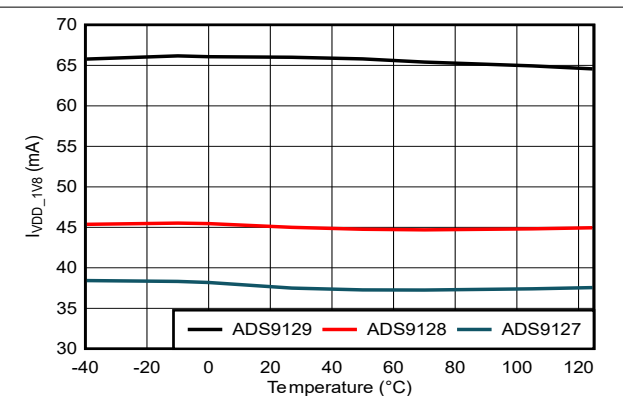
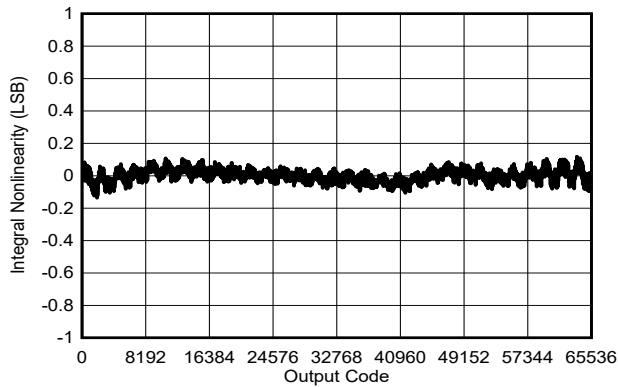


Figure 5-16. VDD_1V8 Current vs Temperature

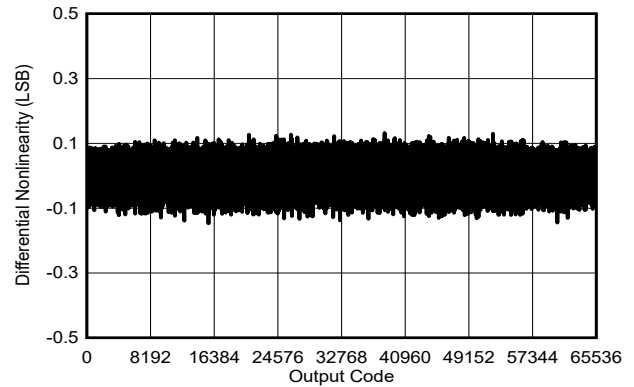
5.10 Typical Characteristics: ADS9129

at $T_A = 25^\circ\text{C}$, $AVDD_{5V} = 5\text{V}$, $VDD_{1V8} = 1.8\text{V}$, external $V_{REF} = 4.096\text{V}$, and maximum throughput (unless otherwise noted)



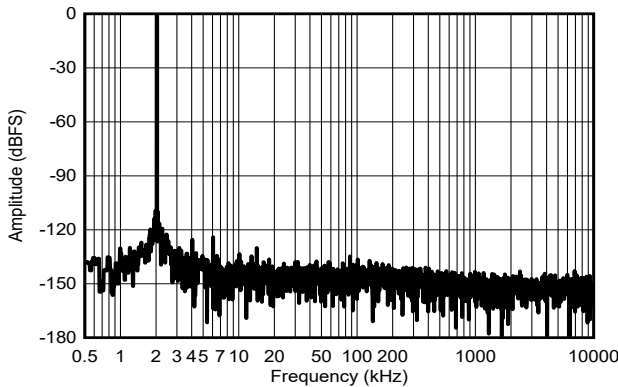
Typical INL = $\pm 0.15\text{LSB}$

Figure 5-17. Typical INL



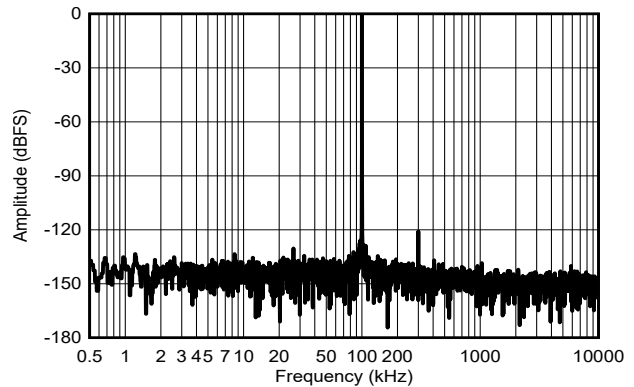
Typical DNL = $\pm 0.15\text{LSB}$

Figure 5-18. Typical DNL: ADS9129



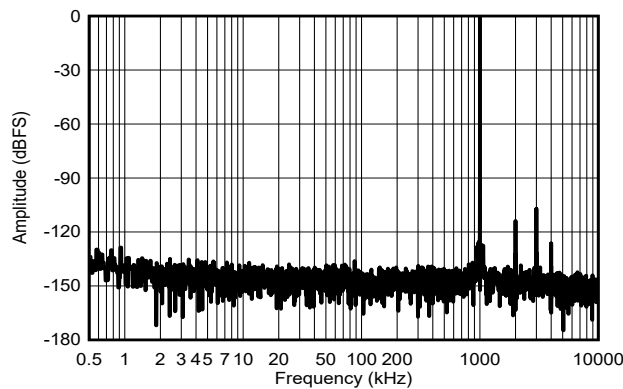
$f_{IN} = 2\text{kHz}$, SNR = 93.5dBFS, THD = -120dB

Figure 5-19. Typical FFT for $f_{IN} = 2\text{kHz}$



$f_{IN} = 100\text{kHz}$, SNR = 93.5dBFS, THD = -118dB

Figure 5-20. Typical FFT for $f_{IN} = 100\text{kHz}$

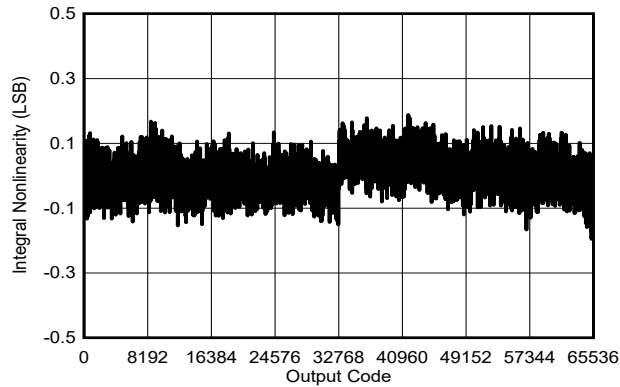


$f_{IN} = 1\text{MHz}$, SNR = 93.3dBFS, THD = -104.2dB

Figure 5-21. Typical FFT for $f_{IN} = 1\text{MHz}$

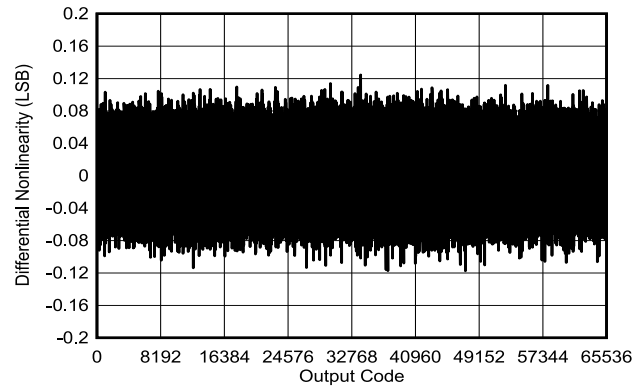
5.11 Typical Characteristics: ADS9128

at $T_A = 25^\circ\text{C}$, $AVDD_{5V} = 5\text{V}$, $VDD_{1V8} = 1.8\text{V}$, internal $V_{REF} = 4.096\text{V}$, and maximum throughput (unless otherwise noted)



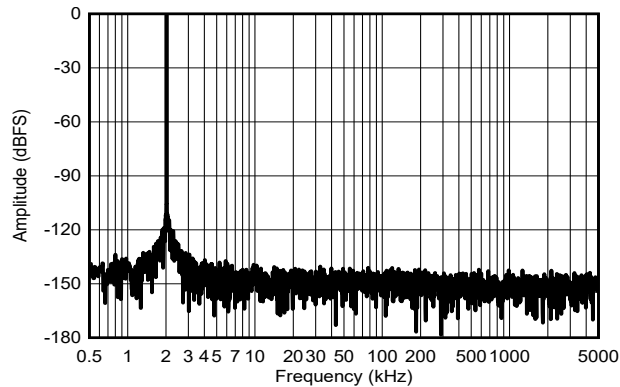
Typical INL = $\pm 0.2\text{LSB}$

Figure 5-22. Typical INL



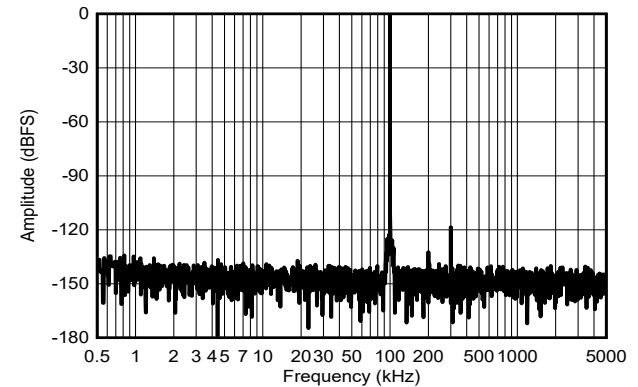
Typical DNL = $\pm 0.15\text{LSB}$

Figure 5-23. Typical DNL



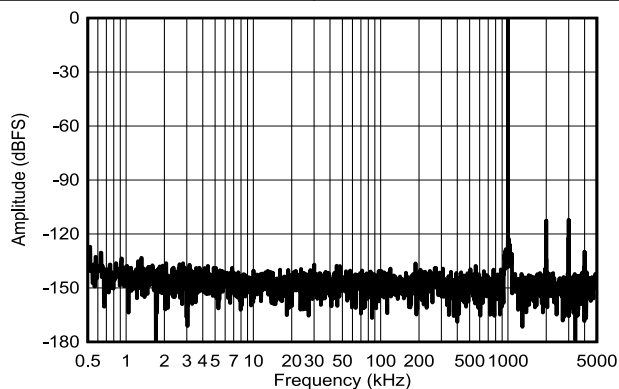
$f_{IN} = 2\text{kHz}$, SNR = 93.9dBFS, THD = -122dB

Figure 5-24. Typical FFT for $f_{IN} = 2\text{kHz}$



$f_{IN} = 100\text{kHz}$, SNR = 93.8dBFS, THD = -118dB

Figure 5-25. Typical FFT for $f_{IN} = 100\text{kHz}$

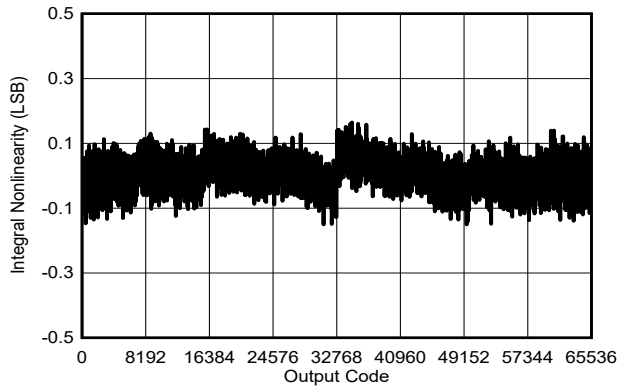


$f_{IN} = 1\text{MHz}$, SNR = 93.3dBFS, THD = -104dB

Figure 5-26. Typical FFT for $f_{IN} = 1\text{MHz}$

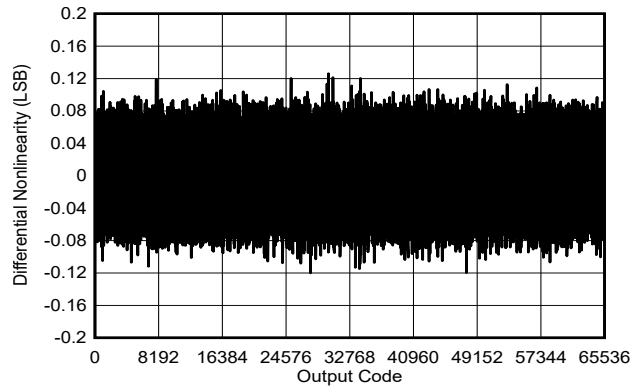
5.12 Typical Characteristics: ADS9127

at $T_A = 25^\circ\text{C}$, $AVDD_{5V} = 5V$, $VDD_{1V8} = 1.8V$, internal $V_{REF} = 4.096V$, and maximum throughput (unless otherwise noted)



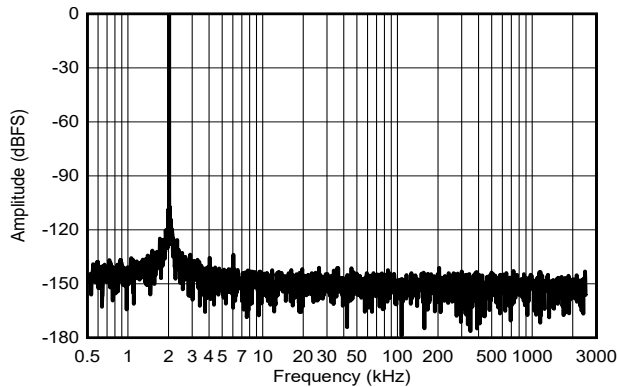
Typical INL = $\pm 0.2\text{LSB}$

Figure 5-27. Typical INL



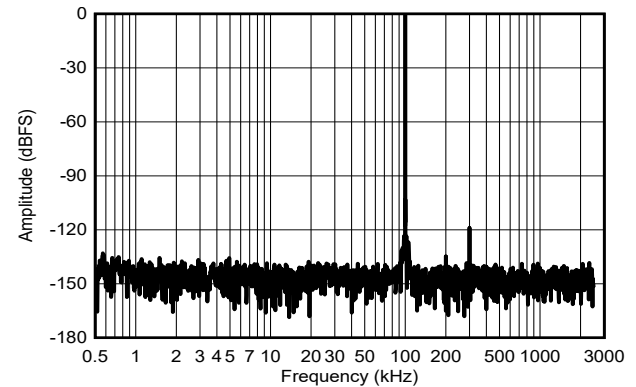
Typical DNL = $\pm 0.15\text{LSB}$

Figure 5-28. Typical DNL



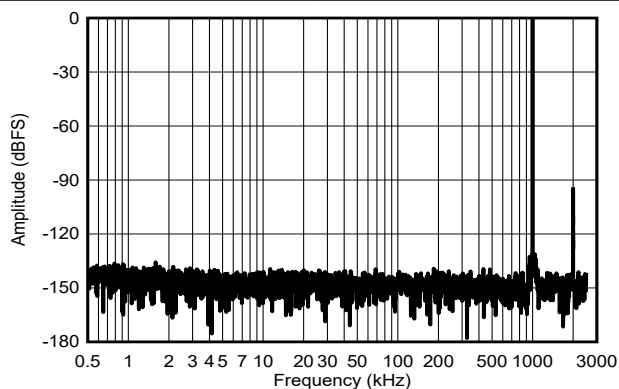
$f_{IN} = 2\text{kHz}$, SNR = 93.9dBFS, THD = -122.5dB

Figure 5-29. Typical FFT for $f_{IN} = 2\text{kHz}$



$f_{IN} = 100\text{kHz}$, SNR = 93.8dBFS, THD = -119dB

Figure 5-30. Typical FFT for $f_{IN} = 100\text{kHz}$



$f_{IN} = 1\text{MHz}$, SNR = 93.3dBFS, THD = -104.5dB

Figure 5-31. Typical FFT for $f_{IN} = 1\text{MHz}$

6 Detailed Description

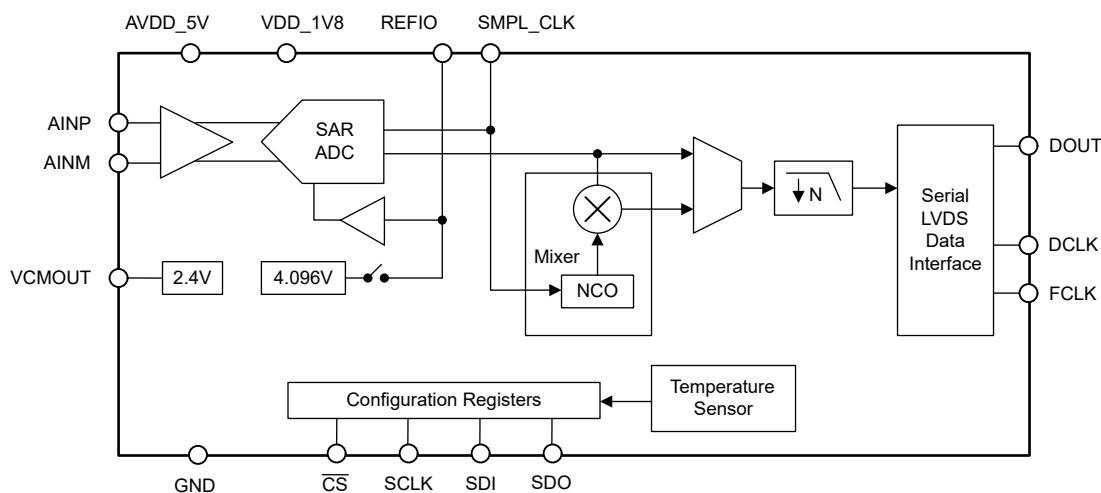
6.1 Overview

The ADS912x is 16-bit, 20MSPS analog-to-digital converter (ADC). The ADS912x integrates a high-impedance buffer at the ADC inputs, voltage reference, reference buffer, and common-mode voltage output buffer. The ADS9129 supports unipolar differential analog input signals. The buffer at the ADC inputs is optimized for low-distortion and low-power operation.

For DC level shifting of the analog input signals, the device has a common-mode voltage output buffer. The common-mode voltage is derived from the output of the integrated reference buffer. When a conversion is initiated, the differential input between the (AINP – AINM) pins is sampled. The ADS912x uses a clock input on the SMPL_CLK pin to initiate conversions.

The ADS912x consumes only 274mW of power when operating at 20MSPS. This value includes the buffer power dissipation at the ADC inputs. The serial LVDS (SLVDS) digital interface simplifies board layout, timing, firmware, and supports full throughput at lower clock speeds.

6.2 Functional Block Diagram



6.3 Feature Description

6.3.1 Analog Inputs

The ADS912x supports both AC-coupled and DC-coupled differential analog inputs. Make sure the input common-mode voltage of the analog inputs matches the voltage level on the VCMOUT pin. [Figure 6-1](#) shows the equivalent input network diagram of the device.

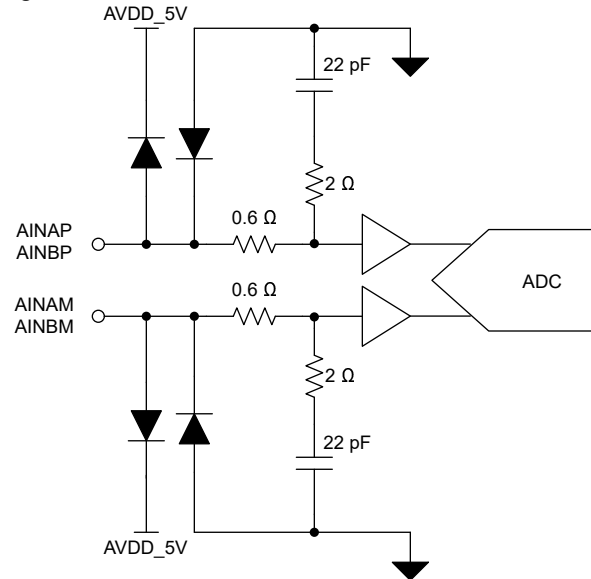


Figure 6-1. Equivalent Input Network

6.3.2 Analog Input Bandwidth

[Figure 5-7](#) illustrates the analog full-power input bandwidth of the ADS912x. The -3dB bandwidth is 90MHz for the ADS9129 and ADS9128, and 45MHz for the ADS9127.

6.3.3 ADC Transfer Function

The ADS912x supports a $\pm 3.2\text{V}$ differential input range. The device outputs 16-bit conversion data in either straight-binary or binary two's-complement format. As shown in [Table 6-1](#), the format for the output codes is the same across all analog channels. Configure the format for the output codes with the DATA_FORMAT field in register address 0x0D. The least significant bit (LSB) for the ADC is given by $1\text{LSB} = 6.4\text{V} / 2^{16}$.

Table 6-1. Transfer Characteristics

| INPUT VOLTAGE | DESCRIPTION | ADC OUTPUT IN 2's-COMPLEMENT FORMAT | ADC OUTPUT IN STRAIGHT-BINARY FORMAT |
|-----------------------------------|--------------------------|-------------------------------------|--------------------------------------|
| $\leq -3.2\text{V} + 1\text{LSB}$ | Negative full-scale code | 0x8000 | 0x0000 |
| $0\text{V} + 1\text{LSB}$ | Mid-code | 0x0000 | 0x7FFF |
| $\geq 3.2\text{V} - 1\text{LSB}$ | Positive full-scale code | 0x7FFF | 0xFFFF |

6.3.4 Reference Voltage

The ADS912x has a precision, low-drift voltage reference internal to the device. For best performance, filter the internal reference noise (as shown in Figure 6-2) by connecting a 10µF ceramic bypass capacitor to the REFIO pin. As shown in Figure 6-3, connect an external reference at the REFIO pin. When using an external reference, disable the internal reference voltage by writing PD_REF = 1b in address 0xC1 of register bank 1.

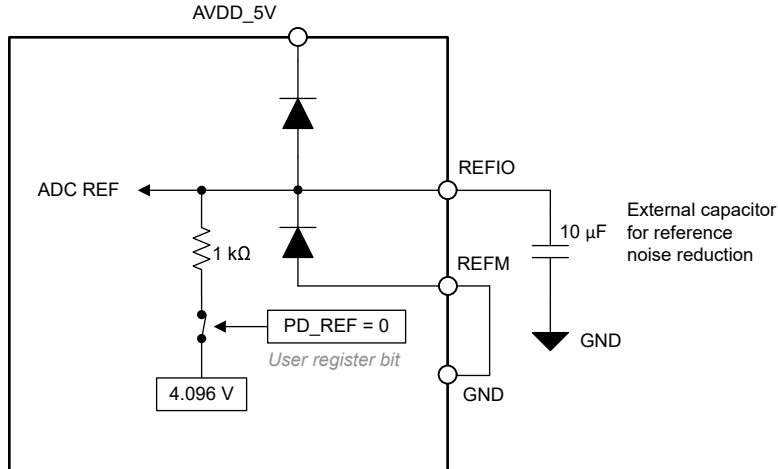


Figure 6-2. Internal Reference Voltage

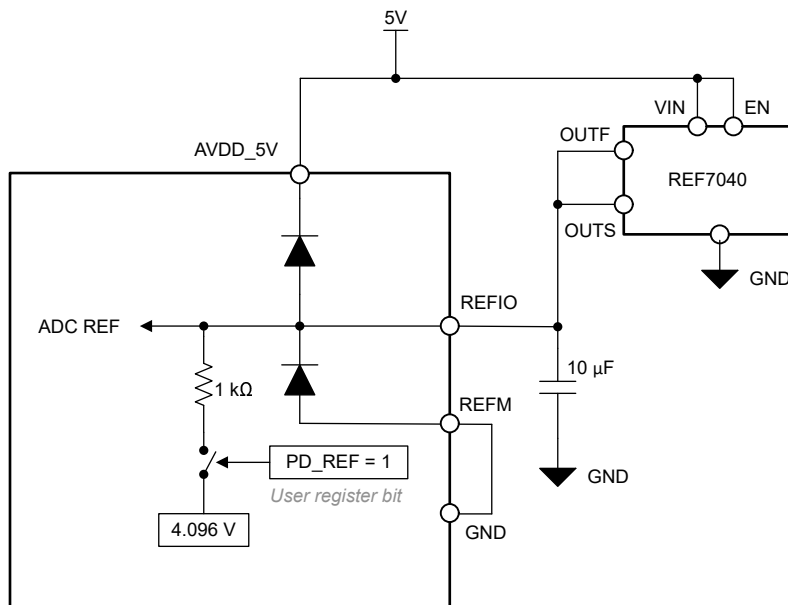


Figure 6-3. External Reference Voltage

6.3.5 Temperature Sensor

The ADS912x features a 10-bit temperature sensor for measuring temperature inside the device. Follow the sequence listed in Table 6-2 to read the temperature sensor output with the SPI. Read the temperature sensor data at anytime independent of the ADC data interface.

Equation 1 calculates the transfer function for the temperature sensor.

$$\text{Temperature} = -85.0172 + (10 \text{ bit output} \times 0.24918) \text{ } ^\circ\text{C} \quad (1)$$

Table 6-2. Sequence to Read Temperature Sensor Output

| REGISTER ADDRESS | REGISTER BANK | VALUE | COMMENT |
|------------------|---------------|--------------------------------|--|
| 0x90 | 1 | 0x4000 | Write register to load temperature sensor output in address 0x91 |
| 0x91 | 1 | 10-bit temperature sensor data | Read register for temperature sensor output |
| 0x90 | 1 | 0x0000 | Write register |

6.3.6 Data Averaging

The ADS912x features a built-in decimation filter that averages the conversion results from the ADC. The output data rate is reduced with higher data averaging. Table 6-3 shows the register settings corresponding to oversampling ratios.

As shown in Figure 6-4, a pulse on the SMPL_SYNC pin resets the decimation filter. A pulse on SMPL_SYNC synchronizes multiple ADS912x devices when using the decimation filter.

Table 6-3. Register Map Settings for OSR

| DECIMATION | REGISTER | VALUE |
|--------------------|-------------------------|-------|
| OSR initialization | CLK3 (0xC5[9]) | 1 |
| | OSR_INIT1 (0xC0[11:10]) | 1 |
| | OSR_INIT2 (0xC4[5:4]) | 2 |
| | OSR_INIT3 (0xC4[1]) | 1 |
| | OSR_EN (0x0D[6]) | 1 |
| 2 | OSR (0x0D[5:2]) | 0 |
| | OSR_CLK (0xC0[9:7]) | 0 |
| 4 | OSR (0x0D[5:2]) | 1 |
| | OSR_CLK (0xC0[9:7]) | 4 |
| 8 | OSR (0x0D[5:2]) | 2 |
| | OSR_CLK (0xC0[9:7]) | 5 |
| 16 | OSR (0x0D[5:2]) | 3 |
| | OSR_CLK (0xC0[9:7]) | 6 |

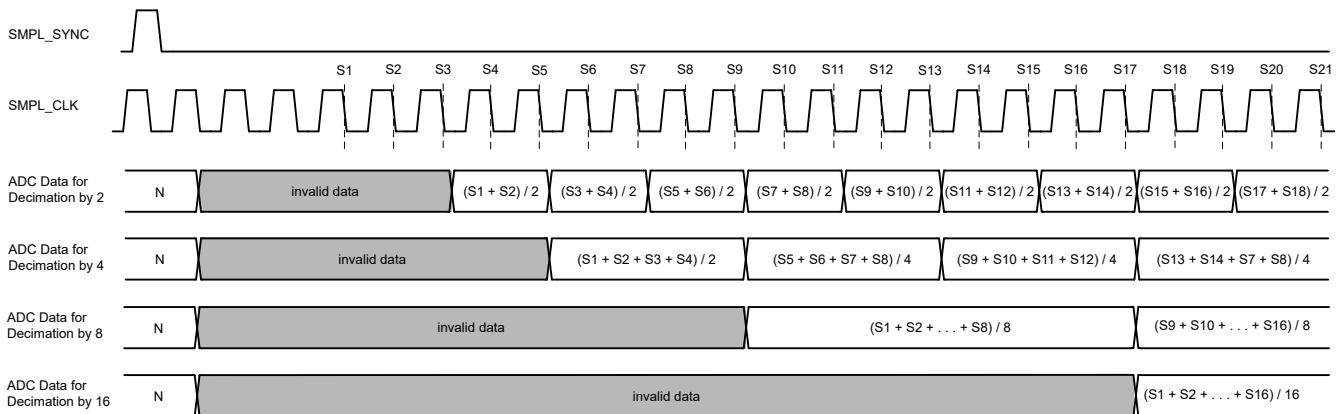


Figure 6-4. Data Output With Decimation

6.3.7 Digital Down Converter

The ADS912x includes an optional on-chip digital down conversion (DDC) that is enabled by SPI register settings. As shown in Figure 6-5, the DDC includes a digital mixer and a 24-bit, numerically controlled oscillator (NCO). The digital mixer generates 24-bit I and Q outputs that represent complex mixing of ADC output data with the NCO output frequency. The ADC generates a 48-bit output corresponding to the 24-bit I and Q outputs, respectively, from the digital mixer.

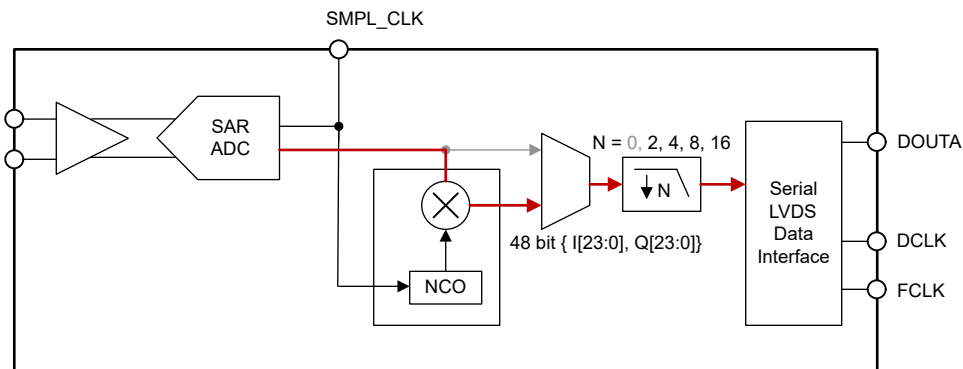


Figure 6-5. Data Path When Using a Digital Down Converter

The output frequency of the NCO, given by Equation 2, is configured using the NCO_FREQUENCY register (address 0xFD and 0xFE).

$$f_{\text{NCO}} = \frac{f_{\text{SMPL_CLK}}}{2^{24}} \times (\text{NCO_FREQUENCY}[23:0] \& 0\text{FFFFFF0}) \text{ Hz} \quad (2)$$

The output phase of the NCO is reset by applying a pulse on the SMPL_SYNC pin, see Figure 5-5. As shown in Equation 3 and Table 6-4, the initial phase of the NCO output is configured using the NCO_PHASE register (address 0xFC and 0xFD).

$$\text{NCO_PHASE}[23:0] = \left(\frac{\text{Initial phase}}{2\pi} \times 2^{24} \right) \& 0\text{FFFFFF0} \quad (3)$$

Table 6-4. Initial NCO Phase

| NCO_PHASE[23:0] | INITIAL PHASE |
|-----------------|---------------|
| 0x000000 | 0 |
| 0x7FFFFFF0 | π |
| 0xFFFFF0 | 2π |

Use a decimation factor of either 2, 4, 8, or 16 with the DDC. [Table 6-5](#) shows the register configuration for decimating the DDC output.

Table 6-5. Decimation Settings for the DDC

| DECIMATION | REGISTER | VALUE |
|---|-------------------------|-------|
| 2 | OSR_EN (0x0D[6]) | 1 |
| | OSR (0x0D[5:2]) | 0 |
| | OSR_CLK (0xC0[9:7]) | 0 |
| Common settings for decimation factors 4, 8, and 16 | CLK3 (0xC5[9]) | 1 |
| | OSR_INIT1 (0xC0[11:10]) | 1 |
| | OSR_INIT2 (0xC4[5:4]) | 2 |
| | OSR_INIT3 (0xC4[1]) | 1 |
| | OSR_EN (0x0D[6]) | 1 |
| 4 | OSR (0x0D[5:2]) | 1 |
| | OSR_CLK (0xC0[9:7]) | 0 |
| 8 | OSR (0x0D[5:2]) | 2 |
| | OSR_CLK (0xC0[9:7]) | 4 |
| 16 | OSR (0x0D[5:2]) | 3 |
| | OSR_CLK (0xC0[9:7]) | 5 |

6.3.8 Data Interface

The ADS912x features a high-speed, serial LVDS data interface with output data frame width to 20 bits or 24 bits with the single-data rate (SDR) and double-data rate (DDR) modes.

Configure the INIT_1 register field before writing to other register fields, as described in [Table 6-6](#) and [Table 6-7](#).

Table 6-6. Register Map Settings for Output Data Interface for the ADS9127

| DATA FRAME WIDTH (Bits) | DATA RATE | INIT_1 0x04[3:0] | DATA_LANES 0x12[2:0] | DATA_RATE 0xC1[8] | CLK1 0xC0[12] | CLK2 0xC1[0] | CLK3 0xC5[9] | CLK4 0xC5[3:2] | CLK5 0xFB[1] | CLK6 0x1C[7:6] |
|-------------------------|-----------|------------------|----------------------|-------------------|---------------|--------------|--------------|----------------|--------------|----------------|
| 20 | SDR | 0x000B | 0 | 1 | 0 | 1 | 0 | 3 | 0 | 3 |
| 20 | DDR | 0x000B | 0 | 0 | 0 | 1 | 0 | 3 | 0 | 3 |
| 24 | SDR | 0x0000 | 2 | 1 | 0 | 0 | 0 | 0 | 0 | 0 |
| 24 | DDR | 0x0000 | 2 | 0 | 0 | 0 | 0 | 0 | 0 | 0 |

Table 6-7. Register Map Settings for Output Data Interface for the ADS9129 and ADS9128

| DATA FRAME WIDTH (Bits) | DATA RATE | INIT_1 0x04[3:0] | DATA_LANES 0x12[2:0] | DATA_RATE 0xC1[8] | CLK1 0xC0[12] | CLK2 0xC1[0] | CLK3 0xC5[9] | CLK4 0xC5[3:2] | CLK5 0xFB[1] | CLK6 0x1C[7:6] |
|-------------------------|-----------|------------------|----------------------|-------------------|---------------|--------------|--------------|----------------|--------------|----------------|
| 20 | SDR | — | | | | | | | | Not supported |
| 20 | DDR | — | | | | | | | | Not supported |
| 24 | SDR | — | 2 | 1 | 0 | 0 | 0 | 0 | 0 | 0 |
| 24 | DDR | — | 2 | 0 | 0 | 0 | 0 | 0 | 0 | 0 |

The ADS912x generates a data clock DCLK that is a multiple of the ADC sampling clock SMPL_CLK. The data clock frequency depends on the data frame width and data rate. The data frame width is 20 or 24 bits and the data rate is SDR or DDR. The following equation calculates the DCLK speed. [Table 6-8](#) lists the possible values for the output data clock frequency.

$$\text{DCLK speed} = \frac{\text{Data Frame Width (24 bit or 20 bit)}}{\text{Data Rate (SDR = 1, DDR = 2)}} \times \text{SMPL_CLK} \quad (4)$$

Table 6-8. Data Clock (DCLK) Speed

| DATA FRAME WIDTH (Bits) | DATA RATE (1 = SDR, 2 = DDR) | SMPL_CLK MULTIPLIER | DCLK (SMPL_CLK = 5MHz) | DCLK (SMPL_CLK = 10MHz) | DCLK (SMPL_CLK = 20MHz) |
|-------------------------|------------------------------|---------------------|------------------------|-------------------------|-------------------------|
| 24 | 1 | 24 | 120MHz | — | — |
| | 2 | 12 | 60MHz | 120MHz | 240MHz |
| 20 | 1 | 20 | 100MHz | — ⁽¹⁾ | — ⁽¹⁾ |
| | 2 | 10 | 50MHz | — ⁽¹⁾ | — ⁽¹⁾ |

(1) A 20-bit data frame width is not supported for the ADS9129 or ADS9128.

6.3.8.1 Data Frame Width

As shown in [Figure 6-6](#), the ADS912x supports 24-bit and 20-bit data frame width options. Configure the DATA_WIDTH field in address 0x12 to select the data frame width. The default output data frame width is 24 bits. The ADC resolution is 18 bits, represented by 20 bits.

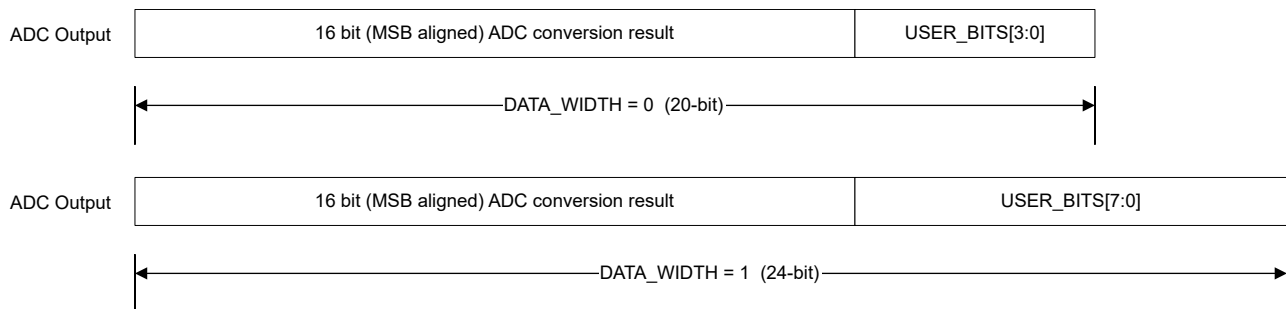


Figure 6-6. Data Frame Width Composition

6.3.8.2 Synchronizing Multiple ADCs

Drive the SMPL_CLK pins of the respective ADS912x devices with a common sampling clock. Match the timing delay on the clock path external to the ADCs by using identical PCB trace lengths for SMPL_CLK for the respective ADCs.

Use the SMPL_SYNC pin to synchronize multiple ADCs when using the internal decimation filter. The SMPL_SYNC pin is latched by the falling edge of the sampling clock. A pulse on SMPL_SYNC resets the internal decimation filter.

6.3.8.3 Test Patterns for Data Interface

The ADS912x features test patterns (Figure 6-7) used by the host for debugging and verifying the data interface. The test patterns replace the ADC output data with predefined digital data. Enable the test patterns by configuring the corresponding register addresses 0x13 through 0x16 in bank 1.

Table 6-9 lists the test patterns supported by the ADS912x.

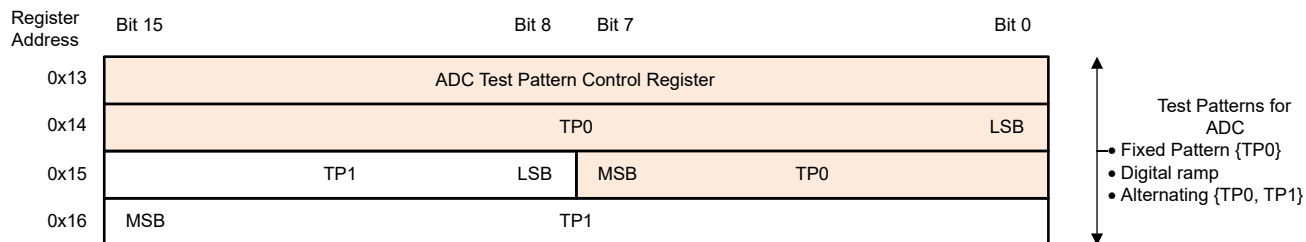


Figure 6-7. Register Bank for Test Patterns

Table 6-9. Test Pattern Configurations

| ADC OUTPUT | TP_EN | TP_MODE | SECTION | RESULT |
|---------------------------|-------|---------|---------------------------------|---------------------------|
| ADC conversion result | 0 | | | |
| Fixed pattern | 1 | 0 or 1 | <i>Fixed Pattern</i> | ADC output = TP0 |
| Digital ramp | 1 | 2 | <i>Digital Ramp</i> | ADC output = Digital ramp |
| Alternating test patterns | 1 | 3 | <i>Alternating Test Pattern</i> | ADC output = TP0, TP1 |

6.3.8.3.1 Fixed Pattern

The ADC outputs fixed patterns defined in the TP0 register in place of the ADC data.

- Configure the test patterns in TP0
- Set TP_EN = 1 and TP_MODE = 0 (address = 0x13)

6.3.8.3.2 Alternating Test Pattern

The ADC outputs alternating test patterns defined in the TP0 and TP1 registers in place of the ADC data.

- Configure the test patterns in TP0 and TP1
- Set TP_EN = 1 and TP_MODE = 3 (address = 0x13)

6.3.8.3.3 Digital Ramp

The ADC outputs digital ramp values with increments specified in the RAMP_INC register in place of the ADC data.

- Configure the increment value between two successive steps of the digital ramp in the RAMP_INC (address = 0x13) register. The digital ramp increments by $N + 1$, where N is the value configured in the RAMP_INC register.
- Set TP_EN = 1 and TP_MODE = 2 (address = 0x13).

6.3.9 ADC Sampling Clock Input

Use a low-jitter external clock with a high slew rate to maximize SNR performance. Operate the ADS912x with a differential or single-ended clock input. Clock amplitude impacts the ADC aperture jitter and, consequently, SNR. For maximum SNR performance, provide a clock signal with fast slew rates that maximizes swing between VDD_1V8 and GND levels.

Make sure the sampling clock is a free-running continuous clock. The ADC generates a valid output data, data clock, and frame clock $t_{PU_SMPL_CLK}$, as specified in the [Switching Characteristics](#) after a free-running sampling clock is applied. When the sampling clock is stopped, the ADC is in power-down and the output data, data clock, and frame clock are invalid.

Figure 6-8 shows a diagram of the differential sampling clock input. For this configuration, connect the differential sampling clock input to the SMPL_CLKP and SMPL_CLKM pins. Figure 6-9 shows a diagram of the single-ended sampling clock input. In this configuration, connect the single-ended sampling clock to SMPL_CLKP and connect SMPL_CLKM to ground.

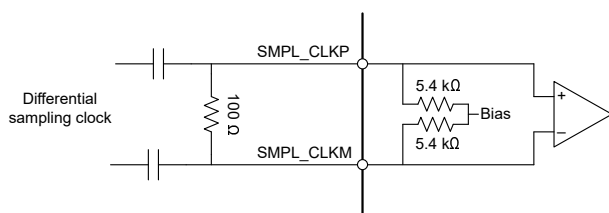


Figure 6-8. AC-Coupled Differential Sampling Clock

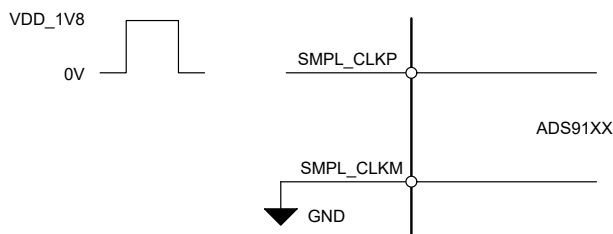


Figure 6-9. Single-Ended Sampling Clock

Figure 5-6 shows the latency from analog input sampling instant to corresponding data MSB output marked by the FCLK rising edge. The equations for data output latency depend on the output data frame width and are given in Table 6-10.

Table 6-10. Data Output Latency

| DEVICE | 24-BIT DATA FRAME | 20-BIT DATA FRAME |
|---------|---------------------------------------|------------------------------------|
| ADS9129 | $2 \times t_{SMPL_CLK} + t_{LAT}$ | Not supported |
| ADS9128 | $1.83 \times t_{SMPL_CLK} + t_{LAT}$ | Not supported |
| ADS9127 | $1.83 \times t_{SMPL_CLK} + t_{LAT}$ | $2 \times t_{SMPL_CLK} + t_{LAT}$ |

- For t_{LAT} , see the [Switching Characteristics](#) table.

6.4 Device Functional Modes

6.4.1 Reset

Power down the ADS912x with a logic 0 on the $\overline{\text{RESET}}$ pin or write 1b to the RESET field (address 0x00, register bank 0). The device registers are initialized to the default values after reset. Initialize the device with a sequence of register write operations; see the [Initialization Sequence](#) section.

6.4.2 Power-Down Options

Power down the ADS912x with a logic 0 on the $\overline{\text{PWDN}}$ pin or write 11b to the PD_CH field (address 0xC0, register bank 1). The device registers are initialized to the default values after power-up. Initialize the device with a sequence of register write operations; see the [Initialization Sequence](#) section.

6.4.3 Normal Operation

In normal operating mode, the ADS912x powers up and digitizes the analog inputs at the sampling clock falling edge. The ADC outputs the data clock, frame clock, and MSB-aligned, 16-bit conversion result.

6.4.4 Initialization Sequence

The ADS912x register map is initialized with default values on power-up. [Table 6-11](#) lists the steps to enable gain error calibration (recommended) and change the output data interface. For the ADS9129 only, follow the initialization steps in [Table 6-12](#).

Table 6-11. User-Defined Configuration for the ADS9129, ADS9128, and ADS9127

| STEP NUMBER | REGISTER | | | COMMENT |
|-------------|----------|---------|---|---|
| | BANK | ADDRESS | VALUE[15:0] | |
| 1 | 1 | 0x0D | User defined | Enable gain error calibration and select ADC output data format |
| 2 | 1 | 0x33 | 0x2040 | Enable gain error calibration |
| 3 | 0 | 0x04 | 0x0000 for data frame width = 24 bits 0x000B for data frame width = 20 | |

Table 6-12. Initialization Configuration for the ADS9129 Only

| STEP NUMBER | REGISTER | | |
|-------------|----------|------------|-------------|
| | BANK | ADDRESS | VALUE[15:0] |
| 1 | 1 | 0x0D [9:8] | 0x3 |
| 2 | 1 | 0x34 [1] | 0x1 |

6.5 Programming

6.5.1 Register Write

Register write access is enabled by setting SPI_RD_EN = 0b. The 16-bit configuration registers are grouped in three register banks and are addressable with an 8-bit register address. Register bank 1 and register bank 2 are selected for read or write operation by configuring the PAGE_SEL0 and PAGE_SEL1 bits, respectively. Registers in bank 0 are always accessible, irrespective of the PAGE_SELx bits. The register addresses in bank 0 are unique and are not used in register banks 1 and 2.

As shown in Figure 6-10, steps to write to a register are:

1. Frame 1: Write to register address 0x03 in register bank 0 to select either register bank 1 or bank 2 for a subsequent register write. This frame has no effect when writing to registers in bank 0.
2. Frame 2: Write to a register in the bank selected in frame 1. Repeat this step for writing to multiple registers in the same register bank.

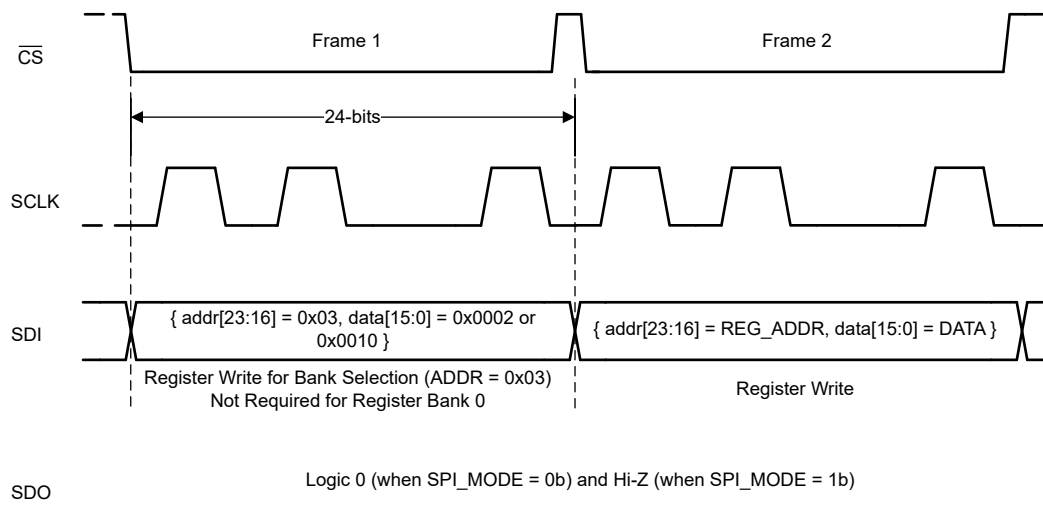


Figure 6-10. Register Write

6.5.2 Register Read

Select the desired register bank by writing to register address 0x03 in register bank 0. Set SPI_RD_EN = 1b and SPI_MODE = 1b in register bank 0 to enable register read access. As illustrated in Figure 6-11, read registers with two 24-bit SPI frames after setting SPI_RD_EN and SPI_MODE. The first SPI frame selects the register bank. The ADC returns the 16-bit register value in the second SPI frame corresponding to the 8-bit register address.

As illustrated in Figure 6-11, steps to read a register are:

1. Frame 1: With SPI_RD_EN = 0b, write to register address 0x03 in register bank 0 to select the desired register bank 0 for reading.
2. Frame 2: Set SPI_RD_EN = 1b and SPI_MODE = 1b in register address 0x00 in register bank 0.
3. Frame 3: Read any register in the selected bank using a 24-bit SPI frame containing the desired register address. Repeat this step with the address of any register in the selected bank to read the corresponding register.
4. Frame 4: Set SPI_RD_EN = 0 to disable register reads and re-enable register writes.
5. Repeat steps 1 through 4 to read registers in a different bank.

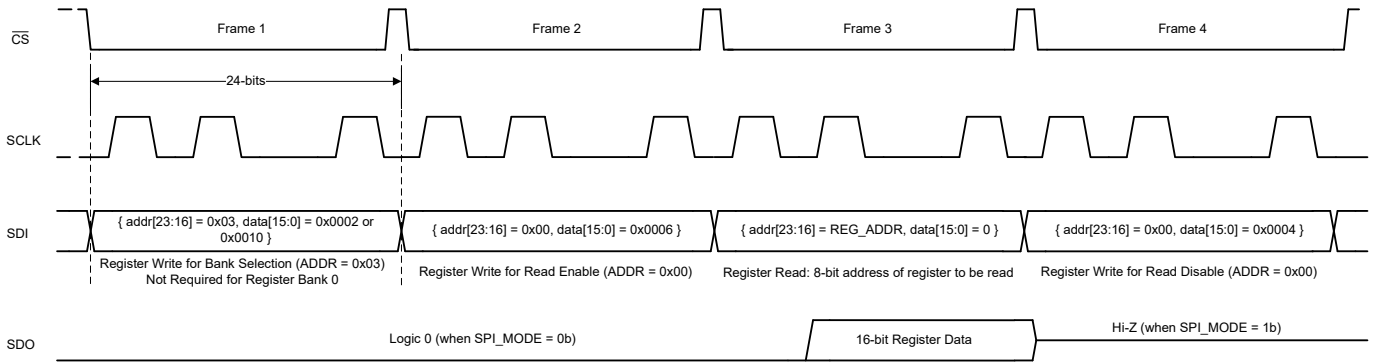


Figure 6-11. Register Read

6.5.3 Multiple Devices: Daisy-Chain Topology for SPI Configuration

Figure 6-12 shows a typical connection diagram showing multiple devices in a daisy-chain topology.

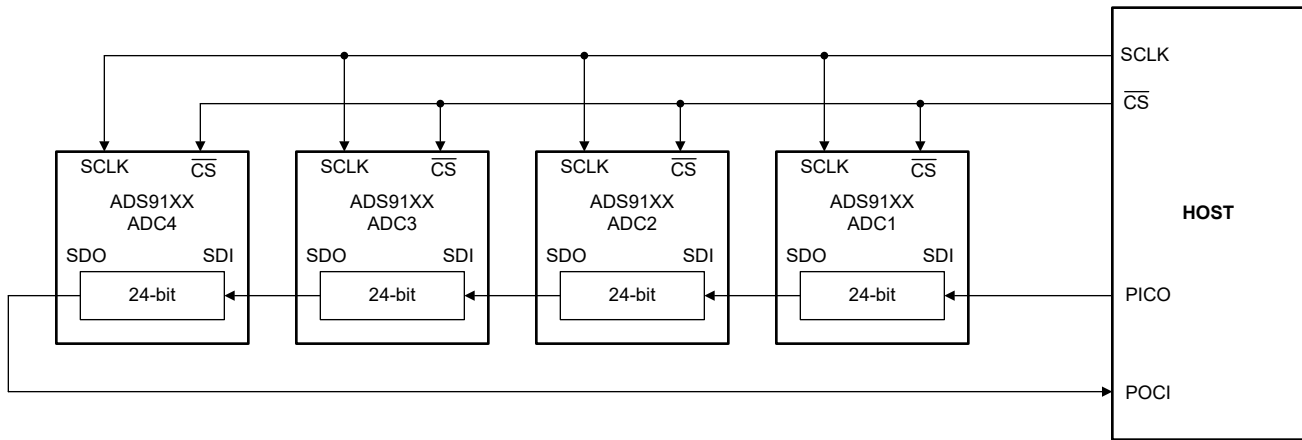


Figure 6-12. Daisy-Chain Connections for SPI Configuration

The \overline{CS} and SCLK inputs of all ADCs are connected together and controlled by a single \overline{CS} and SCLK pin of the controller, respectively. The SDI input pin of the first ADC in the chain (ADC1) is connected to the peripheral IN controller OUT (PICO) pin of the controller. The SDO output pin of ADC1 is connected to the SDI input pin of ADC2, and so on. The SDO output pin of the last ADC in the chain (ADC4) is connected to the peripheral OUT controller IN (POCI) pin of the controller. The data on the PICO pin passes through ADC1 with a 24-SCLK delay, as long as \overline{CS} is active.

Enable daisy-chain mode after power-up or after the device is reset. Set the daisy-chain length in the DAISY_CHAIN_LENGTH register to enable daisy-chain mode. The daisy-chain length is the number of ADCs in the chain, excluding ADC1. In Figure 6-12, the DAISY_CHAIN_LENGTH is 3.

6.5.3.1 Register Write With Daisy-Chain

Writing to registers in daisy-chain configuration requires $N \times 24$ SCLKs in one SPI frame. Register writes in a daisy-chain configuration containing four ADCs, as illustrated in Figure 6-12, requires 96 SCLKs.

Daisy-chain mode is enabled on power-up or after device reset. Configure the DAISY_CHAIN_LENGTH field to enable daisy-chain mode. Repeat the waveform in Figure 6-13 N times, where N is the number of ADCs in the daisy chain. Figure 6-14 provides the SPI waveform, containing N SPI frames, for enabling daisy-chain mode for N ADCs.

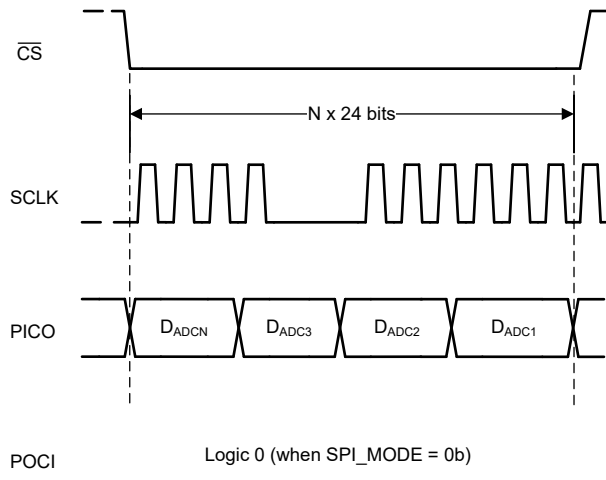


Figure 6-13. Register Write With Daisy-Chain

$$D_{ADC1}[23:0] = D_{ADC2}[23:0] = D_{ADC3}[23:0] = D_{ADCN}[23:0] = \{ 0000\ 0001, 0000\ 0000, N-1, 00 \}$$

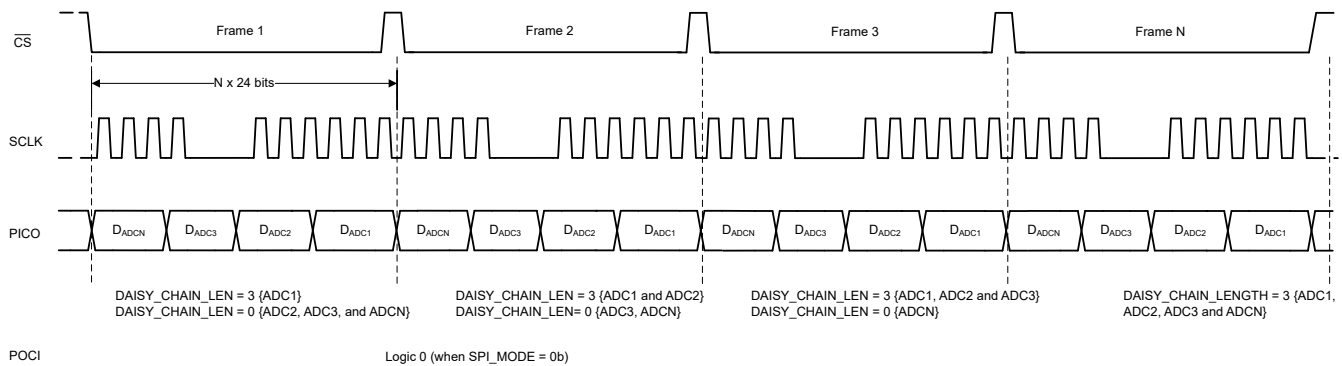


Figure 6-14. Register Write to Configure Daisy-Chain Length

6.5.3.2 Register Read With Daisy-Chain

Figure 6-15 illustrates an SPI waveform for reading registers in daisy-chain configuration. Steps for reading registers from N ADCs connected in a daisy-chain are:

1. Register read is enabled by writing to the following registers:
 - a. Write to PAGE_SEL to select the desired register bank
 - b. Enable register reads by writing SPI_RD_EN = 0b (default on power-up)
2. With the register bank selected and SPI_RD_EN = 0b, the controller reads register data by:
 - a. N × 24-bit SPI frame containing the 8-bit register address to be read: N times (0xFE, 0x00, 8-bit register address)
 - b. N × 24-bit SPI frame to read out register data: N times (0xFF, 0xFF, 0xFF)

The 0xFE in step 2a configures the ADC for register read from the specified 8-bit address. At the end of step 2a, the output shift register in the ADC is loaded with register data. The ADC returns the 8-bit register address and corresponding 16-bit register data in step 2b.

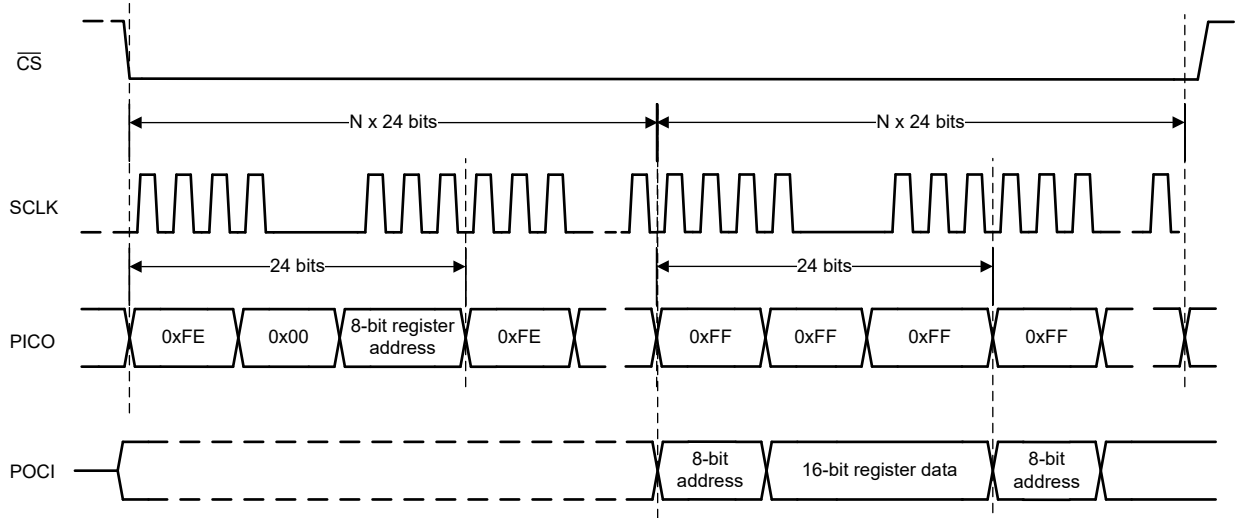


Figure 6-15. Register Read With Daisy-Chain Configuration

7 Register Map

7.1 Register Bank 0

Figure 7-1. Register Bank 0 Map

| ADD | D15 | D14 | D13 | D12 | D11 | D10 | D9 | D8 | D7 | D6 | D5 | D4 | D3 | D2 | D1 | D0 |
|-----|------------------|-----|-----|-----|-----|-----|----|----|-----------------|----|----|--------|----------|----------|-----------|-------|
| 00h | RESERVED | | | | | | | | | | | | | SPI_MODE | SPI_RD_EN | RESET |
| 01h | RESERVED | | | | | | | | DAISY_CHAIN_LEN | | | | RESERVED | | | |
| 03h | RESERVED | | | | | | | | REG_BANK_SEL | | | | | | | |
| 04h | RESERVED | | | | | | | | | | | INIT_1 | | | | |
| 06h | REG_00H_READBACK | | | | | | | | | | | | | | | |

Table 7-1. Register Section/Block Access Type Codes

| Access Type | Code | Description |
|------------------------|------|--|
| R | R | Read |
| W | W | Write |
| R/W | R/W | Read or write |
| Reset or Default Value | | |
| -n | | Value after reset or the default value |

7.1.2 Register 00h (offset = 0h) [reset = 0h]

Figure 7-2. Register 00h

| 15 | 14 | 13 | 12 | 11 | 10 | 9 | 8 |
|----------|----|----|----|----|----------|-----------|-------|
| RESERVED | | | | | | | |
| W-0h | | | | | | | |
| 7 | 6 | 5 | 4 | 3 | 2 | 1 | 0 |
| RESERVED | | | | | SPI_MODE | SPI_RD_EN | RESET |
| W-0h | | | | | W-0h | W-0h | W-0h |

Figure 7-3. Register 00h Field Descriptions

| Bit | Field | Type | Reset | Description |
|------|-----------|------|-------|---|
| 15-3 | RESERVED | W | 0h | Reserved. Do not change from the default reset value. |
| 2 | SPI_MODE | W | 0h | Select between legacy SPI mode and daisy-chain SPI mode for the configuration interface to enable register access. 0 : Daisy-chain SPI mode 1 : Legacy SPI mode |
| 1 | SPI_RD_EN | W | 0h | Enable register read access in legacy SPI mode. This bit has no effect in daisy-chain SPI mode. 0 : Register read disabled 1 : Register read enabled |
| 0 | RESET | W | 0h | ADC reset control. 0 : Normal device operation 1 : Resets the ADC and all registers |

7.1.3 Register 01h (offset = 1h) [reset = 0h]

Figure 7-4. Register 01h

| | | | | | | | |
|----------|-----------------|----|----|----|----|----------|---|
| 15 | 14 | 13 | 12 | 11 | 10 | 9 | 8 |
| RESERVED | | | | | | | |
| R/W-0h | | | | | | | |
| 7 | 6 | 5 | 4 | 3 | 2 | 1 | 0 |
| RESERVED | DAISY_CHAIN_LEN | | | | | RESERVED | |
| R/W-0h | R/W-0h | | | | | R/W-0h | |

Figure 7-5. Register 01h Field Descriptions

| Bit | Field | Type | Reset | Description |
|------|-----------------|------|-------|---|
| 15-7 | RESERVED | R/W | 0h | Reserved. Do not change from the default reset value. |
| 6-2 | DAISY_CHAIN_LEN | R/W | 0h | Configure the number of ADCs connected in daisy-chain for the SPI configuration. 0 : 1 ADC 1 : 2 ADCs 31 : 32 ADCs |
| 1-0 | RESERVED | R/W | 0h | Reserved. Do not change from the default reset value. |

7.1.4 Register 03h (offset = 3h) [reset = 2h]

Figure 7-6. Register 03h

| | | | | | | | |
|--------------|----|----|----|----|----|---|---|
| 15 | 14 | 13 | 12 | 11 | 10 | 9 | 8 |
| RESERVED | | | | | | | |
| R/W-0h | | | | | | | |
| 7 | 6 | 5 | 4 | 3 | 2 | 1 | 0 |
| REG_BANK_SEL | | | | | | | |
| R/W-2h | | | | | | | |

Figure 7-7. Register 03h Field Descriptions

| Bit | Field | Type | Reset | Description |
|------|--------------|------|-------|---|
| 15-8 | RESERVED | R/W | 0h | Reserved. Do not change from the default reset value. |
| 7-0 | REG_BANK_SEL | R/W | 2h | Register bank selection for read and write operations. 0 : Select register bank 0 2 : Select register bank 1 16 : Select register bank 2 |

7.1.5 Register 04h (offset = 4h) [reset = 0h]

Figure 7-8. Register 04h

| | | | | | | | |
|----------|----|----|----|--------|----|---|---|
| 15 | 14 | 13 | 12 | 11 | 10 | 9 | 8 |
| RESERVED | | | | | | | |
| R-0h | | | | | | | |
| 7 | 6 | 5 | 4 | 3 | 2 | 1 | 0 |
| RESERVED | | | | INIT_1 | | | |
| R/W-0h | | | | | | | |

Figure 7-9. Register 04h Field Descriptions

| Bit | Field | Type | Reset | Description |
|-----|--------|------|-------|--|
| 3-0 | INIT_1 | R/W | 0h | INIT_1 field for device initialization. Write 1011b during the initialization sequence. See the Data Interface section for more details. |

7.1.6 Register 06h (offset = 6h) [reset = 2h]

Figure 7-10. Register 06h

| | | | | | | | |
|------------------|----|----|----|----|----|---|---|
| 15 | 14 | 13 | 12 | 11 | 10 | 9 | 8 |
| REG_00H_READBACK | | | | | | | |
| R-0h | | | | | | | |
| 7 | 6 | 5 | 4 | 3 | 2 | 1 | 0 |
| REG_00H_READBACK | | | | | | | |
| R-5h | | | | | | | |

Figure 7-11. Register 06h Field Descriptions

| Bit | Field | Type | Reset | Description |
|------|------------------|------|-------|--|
| 15-0 | REG_00H_READBACK | R | 2h | This register is a copy of the register address 0x00 for readback. The register address 0x00 is write-only. The default readback value is 2h because SPI_RD_EN in address 0x00 is set to 1 for register reads. |

7.2 Register Bank 1

Figure 7-12. Register Bank 1 Map

| ADD | D15 | D14 | D13 | D12 | D11 | D10 | D9 | D8 | D7 | D6 | D5 | D4 | D3 | D2 | D1 | D0 |
|-----|-----------------------|-------|-------------|----------|-----------|----------|---------|-----------|------------------------|------------|-----------------|---------|----------|------------|-----------|----------|
| 0Dh | RESERVED | | DATA_FORMAT | RESERVED | | | LAT_INC | | GE_CAL_EN1 | OSR_EN | OSR | | | | RESERVED | |
| 10h | RESERVED | | | | | | | | | | | | | | | HI_FREQ |
| 12h | RESERVED | | | | | | | | | | | | XOR_EN | DATA_LANES | | |
| 13h | RESERVED | | | | | | | | RAMP_INC | | | TP_MODE | | TP_EN | RESERVED | |
| 14h | TP0 | | | | | | | | | | | | | | | |
| 15h | TP1 | | | | | | | | TP0 | | | | | | | |
| 16h | TP1 | | | | | | | | | | | | | | | |
| 1Ch | RESERVED | | | | | | | | | | USER_BITS_ADC_A | | | | | |
| 33h | RESERVED | | GE_CAL_EN3 | RESERVED | | | | | | GE_CAL_EN2 | RESERVED | | | | | |
| 34h | RESERVED | | | | | | | | | | | | LAT_EN | RESERVED | | |
| 90h | RESERVED | TS_LD | RESERVED | | | | | | | | | | | | | |
| 91h | RESERVED | | | | | | | | TEMPERATURE_SENSOR | | | | | | | |
| C0h | RESERVED | | | CLK1 | OSR_INIT1 | | OSR_CLK | | | RESERVED | | | | PD_CH | | |
| C1h | RESERVED | | | | PD_REF | RESERVED | | DATA_RATE | RESERVED | | | | | | CLK2 | |
| C4h | RESERVED | | | | | | | | | | OSR_INIT2 | | RESERVED | | OSR_INIT3 | PD_CHIP |
| C5h | RESERVED | | HI_FREQ_EN | RESERVED | | | CLK3 | RESERVED | | RD_CLK | RESERVED | CLK4 | | RESERVED | | |
| FBh | RESERVED | | | | | | | | | | | | NCO_SREF | XOR_MODE | CLK5 | MIXER_EN |
| FCh | NCO_PHASE_COUNT[15:0] | | | | | | | | | | | | | | | |
| FDh | NCO_FREQUENCY[7:0] | | | | | | | | NCO_PHASE_COUNT[23:16] | | | | | | | |
| FEh | NCO_FREQUENCY[23:8] | | | | | | | | | | | | | | | |

Table 7-2. Register Section/Block Access Type Codes

| Access Type | Code | Description |
|------------------------|------|--|
| R | R | Read |
| W | W | Write |
| R/W | R/W | Read or write |
| Reset or Default Value | | |
| -n | | Value after reset or the default value |

7.2.1 Register 0Dh (offset = Dh) [reset = 2002h]

Figure 7-13. Register 0Dh

| | | | | | | | |
|------------|--------|-------------|----------|----|----|----------|---|
| 15 | 14 | 13 | 12 | 11 | 10 | 9 | 8 |
| RESERVED | | DATA_FORMAT | RESERVED | | | LAT_INC | |
| R/W-0h | | R/W-1h | R/W-0h | | | R/W-0h | |
| 7 | 6 | 5 | 4 | 3 | 2 | 1 | 0 |
| GE_CAL_EN1 | OSR_EN | OSR | | | | RESERVED | |
| R/W-0h | R/W-0h | R/W-0h | | | | R/W-2h | |

Figure 7-14. Register 0Dh Field Descriptions

| Bit | Field | Type | Reset | Description |
|-------|-------------|------|-------|---|
| 15-14 | RESERVED | R/W | 0h | Reserved. Do not change from the default reset value. |
| 13 | DATA_FORMAT | R/W | 1h | Select data format for the ADC conversion result. 0 : Straight-binary format 1 : Two's-complement format |
| 12-10 | RESERVED | R/W | 0h | Reserved. Do not change from the default reset value. |
| 9-8 | LAT_INC | R/W | 0h | For the ADS9129, set this field to 11b for optimum INL performance. |
| 7 | GE_CAL_EN1 | R/W | 0h | Global control for gain error calibration. 0 : Gain error calibration disabled 1 : Gain error calibration enabled |
| 6 | OSR_EN | R/W | 0h | Control for data averaging depth. 0 : Data averaging disabled 1 : Data averaging enabled |
| 5-2 | OSR | R/W | 0h | Control for enabling data averaging. 0 : 2 samples averaged 1 : 4 samples averaged 2 : 8 samples averaged 3 : 16 samples averaged |
| 1-0 | RESERVED | R/W | 2h | Reserved. Do not change from the default reset value. |

7.2.2 Register 10h (offset = 10h) [reset = 0h]

Figure 7-15. Register 10h

| | | | | | | | |
|----------|----|----|----|----|----|---|----------|
| 15 | 14 | 13 | 12 | 11 | 10 | 9 | 8 |
| RESERVED | | | | | | | |
| R/W-0h | | | | | | | |
| 7 | 6 | 5 | 4 | 3 | 2 | 1 | 0 |
| RESERVED | | | | | | | RESERVED |
| R/W-0h | | | | | | | R/W-0h |

Figure 7-16. Register 10h Field Descriptions

| Bit | Field | Type | Reset | Description |
|------|----------|------|-------|--|
| 15-1 | RESERVED | R/W | 0h | Reserved. Do not change from the default reset value. |
| 0 | HI_FREQ | R/W | 0h | Analog input fast slew rate control 0: Normal slew rate. 1: Fast slew rate. Fast analog input control enabled. Recommended for input frequencies >2MHz. Also see the HI_FREQ_EN register bit. |

7.2.3 Register 12h (offset = 12h) [reset = 2h]

Figure 7-17. Register 12h

| | | | | | | | |
|----------|----|----|----|--------|------------|---|---|
| 15 | 14 | 13 | 12 | 11 | 10 | 9 | 8 |
| RESERVED | | | | | | | |
| R/W-0h | | | | | | | |
| 7 | 6 | 5 | 4 | 3 | 2 | 1 | 0 |
| RESERVED | | | | XOR_EN | DATA_LANES | | |
| R/W-0h | | | | R/W-0h | R/W-2h | | |

Figure 7-18. Register 12h Field Descriptions

| Bit | Field | Type | Reset | Description |
|------|------------|------|-------|--|
| 15-4 | RESERVED | R/W | 0h | Reserved. Do not change from the default reset value. |
| 3 | XOR_EN | R/W | 0h | Enables XOR operation on ADC conversion result. 0 : XOR operation is disabled 1 : ADC conversion result is bit-wise XOR with the PRBS bit by default |
| 2-0 | DATA_LANES | R/W | 2h | Selects the number of output data lanes and number of data bits per output lane. 0 : 20 bits per data output frame on DOUT. 2 : 24 bits per data output frame on DOUT. |

7.2.4 Register 13h (offset = 13h) [reset = 0h]

Figure 7-19. Register 13h

| | | | | | | | |
|----------|----|----|----|---------|----|--------|----------|
| 15 | 14 | 13 | 12 | 11 | 10 | 9 | 8 |
| RESERVED | | | | | | | |
| R/W-0h | | | | | | | |
| 7 | 6 | 5 | 4 | 3 | 2 | 1 | 0 |
| RAMP_INC | | | | TP_MODE | | TP_EN | RESERVED |
| R/W-0h | | | | R/W-0h | | R/W-0h | R/W-0h |

Figure 7-20. Register 13h Field Descriptions

| Bit | Field | Type | Reset | Description |
|------|----------|------|-------|--|
| 15-8 | RESERVED | R/W | 0h | Reserved. Do not change from the default reset value. |
| 7-4 | RAMP_INC | R/W | 0h | Increment value for the ramp pattern output. The output ramp increments by N+1, where N is the value configured in this register. |
| 3-2 | TP_MODE | R/W | 0h | Select digital test pattern for ADC. 0 : Fixed pattern from the TP0 register 1 : Fixed pattern from the TP0 register 2 : Digital ramp output 3 : Alternate fixed pattern output from the TP0 and TP1 registers |
| 1 | TP_EN | R/W | 0h | Enable digital test pattern for data corresponding to ADC. 0 : Data output is the ADC conversion result 1 : Data output is the digital test pattern for ADC |
| 0 | RESERVED | R/W | 0h | Reserved. Do not change from the default reset value. |

7.2.5 Register 14h (offset = 14h) [reset = 0h]

Figure 7-21. Register 14h

| | | | | | | | |
|-----------|----|----|----|----|----|---|---|
| 15 | 14 | 13 | 12 | 11 | 10 | 9 | 8 |
| TP0[15:0] | | | | | | | |
| R/W-0h | | | | | | | |
| 7 | 6 | 5 | 4 | 3 | 2 | 1 | 0 |
| TP0[15:0] | | | | | | | |
| R/W-0h | | | | | | | |

Figure 7-22. Register 14h Field Descriptions

| Bit | Field | Type | Reset | Description |
|------|-----------|------|-------|---------------------------------|
| 15-0 | TP0[15:0] | R/W | 0h | Lower 16 bits of test pattern 0 |

7.2.6 Register 15h (offset = 15h) [reset = 0h]

Figure 7-23. Register 15h

| | | | | | | | |
|------------|----|----|----|----|----|---|---|
| 15 | 14 | 13 | 12 | 11 | 10 | 9 | 8 |
| TP1[7:0] | | | | | | | |
| R/W-0h | | | | | | | |
| 7 | 6 | 5 | 4 | 3 | 2 | 1 | 0 |
| TP0[23:16] | | | | | | | |
| R/W-0h | | | | | | | |

Figure 7-24. Register 15h Field Descriptions

| Bit | Field | Type | Reset | Description |
|------|------------|------|-------|------------------------------------|
| 15-8 | TP1[7:0] | R/W | 0h | Lower eight bits of test pattern 1 |
| 7-0 | TP0[23:16] | R/W | 0h | Upper eight bits of test pattern 0 |

7.2.7 Register 16h (offset = 16h) [reset = 0h]

Figure 7-25. Register 16h

| | | | | | | | |
|-----------|----|----|----|----|----|---|---|
| 15 | 14 | 13 | 12 | 11 | 10 | 9 | 8 |
| TP1[23:8] | | | | | | | |
| R/W-0h | | | | | | | |
| 7 | 6 | 5 | 4 | 3 | 2 | 1 | 0 |
| TP1[23:8] | | | | | | | |
| R/W-0h | | | | | | | |

Figure 7-26. Register 16h Field Descriptions

| Bit | Field | Type | Reset | Description |
|------|-----------|------|-------|---------------------------------|
| 15-0 | TP1[23:8] | R/W | 0h | Upper 16 bits of test pattern 1 |

7.2.8 Register 1Ch (offset = 1Ch) [reset = 0h]

Figure 7-27. Register 1Ch

| | | | | | | | |
|----------|----|-----------------|----|----|----|---|---|
| 15 | 14 | 13 | 12 | 11 | 10 | 9 | 8 |
| RESERVED | | | | | | | |
| R/W-0h | | | | | | | |
| 7 | 6 | 5 | 4 | 3 | 2 | 1 | 0 |
| RESERVED | | USER_BITS_ADC_A | | | | | |
| R/W-0h | | R/W-0h | | | | | |

Figure 7-28. Register 1Ch Field Descriptions

| Bit | Field | Type | Reset | Description |
|------|-----------|------|-------|--|
| 15-6 | RESERVED | R/W | 0h | Reserved. Do not change from the default reset value. |
| 5-0 | USER_BITS | R/W | 0h | User-defined bits appended to the ADC conversion result. |

7.2.9 Register 33h (offset = 33h) [reset = 0h]

Figure 7-29. Register 33h

| | | | | | | | |
|----------|------------|------------|----------|----|----|---|---|
| 15 | 14 | 13 | 12 | 11 | 10 | 9 | 8 |
| RESERVED | | GE_CAL_EN3 | RESERVED | | | | |
| R/W-0h | | R/W-0h | R/W-0h | | | | |
| 7 | 6 | 5 | 4 | 3 | 2 | 1 | 0 |
| RESERVED | GE_CAL_EN2 | RESERVED | | | | | |
| R/W-0h | R/W-0h | R/W-0h | | | | | |

Figure 7-30. Register 33h Field Descriptions

| Bit | Field | Type | Reset | Description |
|-------|------------|------|-------|---|
| 15-14 | RESERVED | R/W | 0h | Reserved. Do not change from the default reset value. |
| 13 | GE_CAL_EN3 | R/W | 0h | Global control for gain error calibration. 0 : Gain error calibration disabled for all channels 1 : Gain error calibration enabled for all channels |
| 12-7 | RESERVED | R/W | 0h | Reserved. Do not change from the default reset value. |
| 6 | GE_CAL_EN2 | R/W | 0h | Global control for gain error calibration. 0 : Gain error calibration disabled for all channels 1 : Gain error calibration enabled for all channels |
| 5-0 | RESERVED | R/W | 0h | Reserved. Do not change from the default reset value. |

7.2.10 Register 34h (offset = 34h) [reset = 0h]

Figure 7-31. Register 34h

| | | | | | | | |
|----------|----|----|--------|----------|----|---|---|
| 15 | 14 | 13 | 12 | 11 | 10 | 9 | 8 |
| RESERVED | | | | | | | |
| R/W-0h | | | | | | | |
| 7 | 6 | 5 | 4 | 3 | 2 | 1 | 0 |
| RESERVED | | | LAT_EN | RESERVED | | | |
| R/W-0h | | | R/W-0h | R/W-0h | | | |

Figure 7-32. Register 34h Field Descriptions

| Bit | Field | Type | Reset | Description |
|------|----------|------|-------|---|
| 15-5 | RESERVED | R/W | 0h | Reserved. Do not change from the default reset value. |
| 4 | LAT_EN | R/W | 0h | For the ADS9129, set this field to 11b for optimum INL performance. |
| 3-0 | RESERVED | R/W | 0h | Reserved. Do not change from the default reset value. |

7.2.11 Register 90h (offset = 90h) [reset = 0h]

Figure 7-33. Register 90h

| | | | | | | | |
|----------|--------|----------|----|----|----|---|---|
| 15 | 14 | 13 | 12 | 11 | 10 | 9 | 8 |
| RESERVED | TS_LD | RESERVED | | | | | |
| R/W-0h | R/W-0h | R/W-0h | | | | | |
| 7 | 6 | 5 | 4 | 3 | 2 | 1 | 0 |
| RESERVED | | | | | | | |
| R/W-0h | | | | | | | |

Figure 7-34. Register 90h Field Descriptions

| Bit | Field | Type | Reset | Description |
|------|----------|------|-------|---|
| 15 | RESERVED | R/W | 0h | Reserved. Do not change from the default reset value. |
| 14 | TS_LD | R/W | 0h | Trigger to load the temperature sensor output in address 0x91. Transition from 0 to 1 if this bit triggers the data load operation. |
| 13-0 | RESERVED | R/W | 0h | Reserved. Do not change from the default reset value. |

7.2.12 Register 91h (offset = 91h) [reset = 00h]

Figure 7-35. Register 91h

| | | | | | | | |
|--------------------|----|----|----|----|----|--------------------|---|
| 15 | 14 | 13 | 12 | 11 | 10 | 9 | 8 |
| RESERVED | | | | | | TEMPERATURE_SENSOR | |
| R/W-0h | | | | | | R/W-0h | |
| 7 | 6 | 5 | 4 | 3 | 2 | 1 | 0 |
| TEMPERATURE_SENSOR | | | | | | | |
| R/W-0h | | | | | | | |

Figure 7-36. Register 91h Field Descriptions

| Bit | Field | Type | Reset | Description |
|-------|--------------------|------|-------|---|
| 15-10 | RESERVED | R/W | 0h | Reserved. Do not change from the default reset value. |
| 9-0 | TEMPERATURE_SENSOR | R/W | 0h | 10-bit temperature sensor output. See the Temperature Sensor section. |

7.2.13 Register C0h (offset = C0h) [reset = 0h]

Figure 7-37. Register C0h

| | | | | | | | |
|----------|----------|----|--------|-----------|--------|---------|---|
| 15 | 14 | 13 | 12 | 11 | 10 | 9 | 8 |
| RESERVED | | | CLK1 | OSR_INIT1 | | OSR_CLK | |
| R/W-0h | | | R/W-0h | R/W-0h | R/W-0h | R/W-0h | |
| 7 | 6 | 5 | 4 | 3 | 2 | 1 | 0 |
| OSR_CLK | RESERVED | | | | | PD_CH | |
| R/W-0h | R/W-0h | | | | | R/W-0h | |

Figure 7-38. Register C0h Field Descriptions

| Bit | Field | Type | Reset | Description |
|-------|-----------|------|-------|--|
| 15-13 | RESERVED | R/W | 0h | Reserved. Do not change from the default reset value. |
| 12 | CLK1 | R/W | 0h | Selects the clock configuration based on output data lanes. See the Data Interface section for more details. 0 : Configuration for DATA_LANES = 0 or 2 1 : Not recommended |
| 11-10 | OSR_INIT1 | R/W | 0h | Initialization for data averaging. 0 : Configuration for disabling data averaging 1 : Configuration for enabling data averaging |
| 9-7 | OSR_CLK | R/W | 0h | Data output clock configuration for data averaging. See Table 6-3 for more details. |
| 6-2 | RESERVED | R/W | 0h | Reserved. Do not change from the default reset value. |
| 1-0 | PD_CH | R/W | 0h | Power-down control for the analog input channels. 0 : Normal operation 1 : ADC powered down 2 : No effect 3 : ADC powered down |

7.2.14 Register C1h (offset = C1h) [reset = 0h]

Figure 7-39. Register C1h

| | | | | | | | |
|----------|----|----|----|--------|----------|---|-----------|
| 15 | 14 | 13 | 12 | 11 | 10 | 9 | 8 |
| RESERVED | | | | PD_REF | RESERVED | | DATA_RATE |
| R/W-0h | | | | R/W-0h | R/W-0h | | R/W-0h |
| 7 | 6 | 5 | 4 | 3 | 2 | 1 | 0 |
| RESERVED | | | | | | | CLK2 |
| R/W-0h | | | | | | | R/W-0h |

Figure 7-40. Register C1h Field Descriptions

| Bit | Field | Type | Reset | Description |
|-------|-----------|------|-------|---|
| 15-12 | RESERVED | R/W | 0h | Reserved. Do not change from the default reset value. |
| 11 | PD_REF | R/W | 0h | ADC reference voltage source selection. 0 : Internal reference enabled. 1 : Internal reference disabled. Connect the external reference voltage to the REFIO pin. |
| 10-9 | RESERVED | R/W | 0h | Reserved. Do not change from the default reset value. |
| 8 | DATA_RATE | R/W | 0h | Select data rate for the data interface. 0 : Double data rate (DDR) 1 : Single data rate (SDR) |
| 7-1 | RESERVED | R/W | 0h | Reserved. Do not change from the default reset value. |
| 0 | CLK2 | R/W | 0h | Select data rate for the data interface. See the Data Interface section for more details. 0 : Configuration for DATA_LANES = 2 or 7 |

7.2.15 Register C4h (offset = C4h) [reset = 0h]

Figure 7-41. Register C4h

| | | | | | | | |
|----------|----|-----------|----|----------|----|-----------|---------|
| 15 | 14 | 13 | 12 | 11 | 10 | 9 | 8 |
| RESERVED | | | | | | | |
| R/W-0h | | | | | | | |
| 7 | 6 | 5 | 4 | 3 | 2 | 1 | 0 |
| RESERVED | | OSR_INIT2 | | RESERVED | | OSR_INIT3 | PD_CHIP |
| R/W-0h | | R/W-0h | | R/W-0h | | R/W-0h | R/W-0h |

Figure 7-42. Register C4h Field Descriptions

| Bit | Field | Type | Reset | Description |
|------|-----------|------|-------|---|
| 15-6 | RESERVED | R/W | 0h | Reserved. Do not change from the default reset value. |
| 5-4 | OSR_INIT2 | R/W | 0h | Initialization for data averaging. 0 : Configuration for disabling data averaging 2 : Configuration for enabling data averaging |
| 3-2 | RESERVED | R/W | 0h | Reserved. Do not change from the default reset value. |
| 1 | OSR_INIT3 | R/W | 0h | Initialization for data averaging. 0 : Configuration for disabling data averaging 1 : Configuration for enabling data averaging |
| 0 | PD_CHIP | R/W | 0h | Full chip power-down control. 0 : Normal device operation 1 : Full device powered down |

7.2.16 Register C5h (offset = C5h) [reset = 0h]

Figure 7-43. Register C5h

| | | | | | | | |
|----------|--------|------------|----------|--------|----|----------|----------|
| 15 | 14 | 13 | 12 | 11 | 10 | 9 | 8 |
| RESERVED | | HI_FREQ_EN | RESERVED | | | CLK3 | RESERVED |
| R/W-0h | | R/W-0h | R/W-0h | | | R/W-0h | R/W-0h |
| 7 | 6 | 5 | 4 | 3 | 2 | 1 | 0 |
| RESERVED | RD_CLK | | RESERVED | CLK4 | | RESERVED | |
| R/W-0h | R/W-0h | | R/W-0h | R/W-0h | | R/W-0h | |

Figure 7-44. Register C5h Field Descriptions

| Bit | Field | Type | Reset | Description |
|-------|------------|------|-------|--|
| 15-14 | RESERVED | R/W | 0h | Reserved. Do not change from the default reset value. |
| 13 | HI_FREQ_EN | R/W | 0h | Fast analog input slew rate enable. 0: Normal slew rate, 1: Fast analog input control enabled. Recommended for input frequencies >2MHz. Also see the HI_FREQ register bit. |
| 12-10 | RESERVED | R/W | 0h | Reserved. Do not change from the default reset value. |
| 9 | CLK3 | R/W | 0h | Select data rate for the data interface. See the Data Interface section for more details. 0 : Configuration for DATA_LANES = 0 or 2 |
| 8 - 7 | RESERVED | R/W | 0h | Reserved. Do not change from the default reset value. |
| 6-5 | RD_CLK | R/W | 0h | Data output clock control for data averaging. See the Data Averaging section for more details. |
| 4 | RESERVED | R/W | 0h | Reserved. Do not change from the default reset value. |
| 3 - 2 | CLK4 | R/W | 0h | Clock configuration for ADS9127. See the Data Interface section for details. Not applicable for the ADS9129 and ADS9128. 0 : 24-bit mode 3 : All other modes |
| 1 - 0 | RESERVED | R/W | 0h | Reserved. Do not change from the default reset value. |

7.2.17 Register FBh (offset = FBh) [reset = 0h]

Figure 7-45. Register FBh

| | | | | | | | |
|----------|----|----|----|------------|----------|--------|----------|
| 15 | 14 | 13 | 12 | 11 | 10 | 9 | 8 |
| RESERVED | | | | | | | |
| R/W-0h | | | | | | | |
| 7 | 6 | 5 | 4 | 3 | 2 | 1 | 0 |
| RESERVED | | | | NCO_SYSREF | XOR_MODE | CLK5 | MIXER_EN |
| R/W-0h | | | | R/W-0h | R/W-0h | R/W-0h | R/W-0h |

Figure 7-46. Register FBh Field Descriptions

| Bit | Field | Type | Reset | Description |
|------|------------|------|-------|--|
| 15-4 | RESERVED | R/W | 0h | Reserved. Do not change from the default reset value. |
| 3 | NCO_SYSREF | R/W | 0h | Set to 1b when applying periodic pulses on the SMPL_SYNC pin. 0: Synchronize the NCO with one pulse on the SMPL_SYNC pin. 1: Synchronize the NCO with the first pulse on the SMPL_SYNC pin when using periodic pulses. |
| 2 | XOR_MODE | R/W | 0h | Selects the bit with which the ADC output data is XORed when XOR output mode is enabled. 0 : The PRBS bit is output after the ADC LSB. ADC output data are XORed with the PRBS bit. 1 : ADC output data are XORed with the LSB of the conversion result. |
| 1 | CLK5 | R/W | 0h | Clock configuration for the ADS9129 and ADS9128. See the Data Interface section for details. Not applicable for the ADS9127. 0 : 24-bit SDR and DDR modes 1 : Not recommended |
| 0 | MIXER_EN | R/W | 0h | 0: Digital down converter disabled 1: Digital down converter enabled |

7.2.18 Register FCh (offset = FCh) [reset = 0h]

Figure 7-47. Register FCh

| | | | | | | | |
|-----------------|----|----|----|----|----|---|---|
| 15 | 14 | 13 | 12 | 11 | 10 | 9 | 8 |
| NCO_PHASE_COUNT | | | | | | | |
| R/W-0h | | | | | | | |
| 7 | 6 | 5 | 4 | 3 | 2 | 1 | 0 |
| NCO_PHASE_COUNT | | | | | | | |
| R/W-0h | | | | | | | |

Figure 7-48. Register FCh Field Descriptions

| Bit | Field | Type | Reset | Description |
|------|-----------------------|------|-------|---|
| 15-0 | NCO_PHASE_COUNT[15:0] | R/W | 0h | Lower 15 bits of the NCO phase count. See the Digital Down Converter section. |

7.2.19 Register FDh (offset = FDh) [reset = 0h]

Figure 7-49. Register FDh

| | | | | | | | |
|-----------------|----|----|----|----|----|---|---|
| 15 | 14 | 13 | 12 | 11 | 10 | 9 | 8 |
| NCO_FREQUENCY | | | | | | | |
| R/W-0h | | | | | | | |
| 7 | 6 | 5 | 4 | 3 | 2 | 1 | 0 |
| NCO_PHASE_COUNT | | | | | | | |
| R/W-0h | | | | | | | |

Figure 7-50. Register FDh Field Descriptions

| Bit | Field | Type | Reset | Description |
|------|------------------------|------|-------|--|
| 15-8 | NCO_FREQUENCY[7:0] | R/W | 0h | Lower eight bits of the NCO phase count. See the Digital Down Converter section. |
| 7-0 | NCO_PHASE_COUNT[23:16] | R/W | 0h | Upper eight bits of the NCO phase count. See the Digital Down Converter section. |

7.2.20 Register FEh (offset = FEh) [reset = 0h]

Figure 7-51. Register FEh

| | | | | | | | |
|---------------|----|----|----|----|----|---|---|
| 15 | 14 | 13 | 12 | 11 | 10 | 9 | 8 |
| NCO_FREQUENCY | | | | | | | |
| R/W-0h | | | | | | | |
| 7 | 6 | 5 | 4 | 3 | 2 | 1 | 0 |
| NCO_FREQUENCY | | | | | | | |
| R/W-0h | | | | | | | |

Figure 7-52. Register FEh Field Descriptions

| Bit | Field | Type | Reset | Description |
|------|---------------|------|-------|---|
| 15-0 | NCO_FREQUENCY | R/W | 0h | Upper 16 bits of the NCO phase count. See the Digital Down Converter section. |

7.3 Register Bank 2

Figure 7-53. Register Bank 2 Map

| ADD | D15 | D14 | D13 | D12 | D11 | D10 | D9 | D8 | D7 | D6 | D5 | D4 | D3 | D2 | D1 | D0 |
|-----|----------|-----|-----|-----|-----|-----|----|------|----|----------|----|----|----|----|----|----|
| 1Ch | RESERVED | | | | | | | CLK6 | | RESERVED | | | | | | |

Table 7-3. Register Section/Block Access Type Codes

| Access Type | Code | Description |
|------------------------|------|--|
| R | R | Read |
| W | W | Write |
| R/W | R/W | Read or write |
| Reset or Default Value | | |
| -n | | Value after reset or the default value |

7.3.1 Register 1Ch (offset = 1Ch) [reset = 0h]

Figure 7-54. Register 1Ch

| 15 | 14 | 13 | 12 | 11 | 10 | 9 | 8 |
|----------|----|----------|----|----|----|---|---|
| RESERVED | | | | | | | |
| R/W-0h | | | | | | | |
| 7 | 6 | 5 | 4 | 3 | 2 | 1 | 0 |
| CLK6 | | RESERVED | | | | | |
| R/W-0h | | R/W-0h | | | | | |

Figure 7-55. Register 1Ch Field Descriptions

| Bit | Field | Type | Reset | Description |
|------|----------|------|-------|---|
| 15-8 | RESERVED | R/W | 0h | Reserved. Do not change from the default reset value. |
| 7-6 | CLK6 | R/W | 0h | Clock configuration for ADS9127. See the Data Interface section for details. Not applicable for the ADS9129 and ADS9128. 0 : 24-bit 2-lane mode 3 : All other modes |
| 5-0 | RESERVED | R/W | 0h | Reserved. Do not change from the default reset value. |

8 Application and Implementation

Note

Information in the following applications sections is not part of the TI component specification, and TI does not warrant its accuracy or completeness. TI's customers are responsible for determining suitability of components for their purposes, as well as validating and testing their design implementation to confirm system functionality.

8.1 Application Information

The ADS912x features an integrated ADC driver, low latency, high speed, low AC and DC errors, and low temperature drift. These features make the ADS912x a high-performance signal-chain for applications requiring precision measurements with low latency. The following section provides example circuits and recommendations for using the ADS912x device family in a data acquisition (DAQ) system.

8.2 Typical Applications

8.2.1 Data Acquisition (DAQ) Circuit for a $\leq 20\text{kHz}$ Input Signal Bandwidth

Figure 8-1 shows a signal-chain with minimum external components. This signal-chain significantly reduces solution size by driving the ADS912x with the fully differential amplifier (FDA) THS4551.

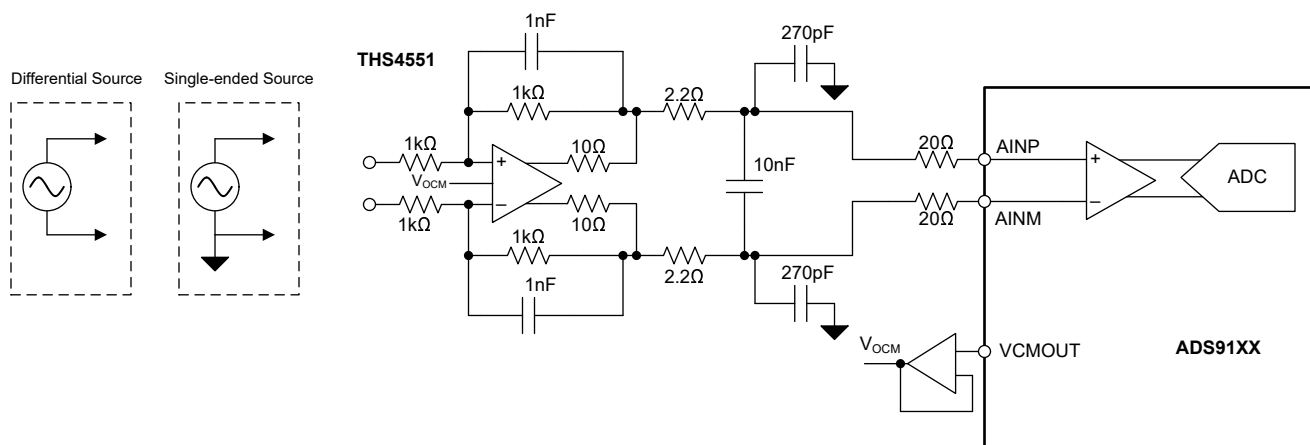


Figure 8-1. Data Acquisition (DAQ) Circuit for a $\leq 20\text{kHz}$ Input Signal Bandwidth

8.2.1.1 Design Requirements

Table 8-1 lists the parameters for this typical application.

Table 8-1. Design Parameters

| PARAMETER | VALUE |
|------------------------|----------------------|
| SNR | $\geq 92\text{dB}$ |
| THD | $\leq -110\text{dB}$ |
| Input signal frequency | $\leq 20\text{kHz}$ |

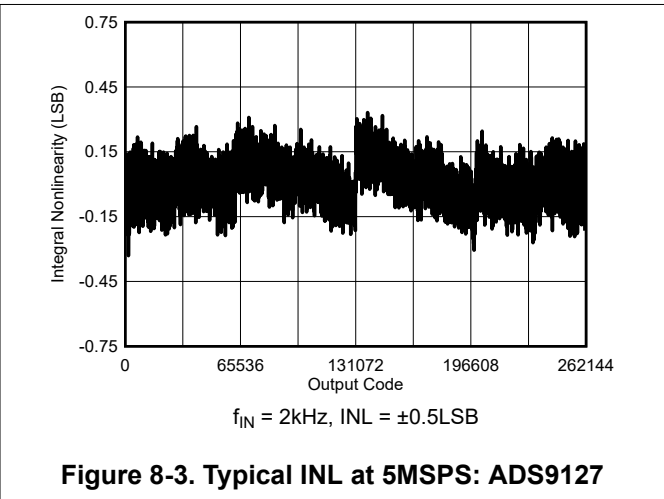
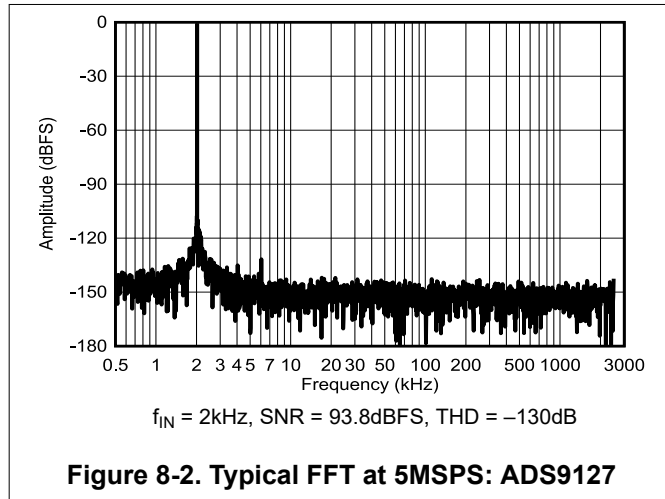
8.2.1.2 Detailed Design Procedure

Use the procedure discussed in this section for any ADS912x application circuit.

- All ADS912x applications require supply decoupling, as provided in the [Power Supply Recommendations](#) section.
- Make sure the values provided in the [Typical Applications](#) section meet the maximum throughput and input signal frequency design requirements. Use a lower bandwidth signal chain when lower noise performance is required.

8.2.1.3 Application Curves

Figure 8-2 and Figure 8-3 show the SNR and INL performance for the circuit in Figure 8-1, respectively.



8.2.2 Data Acquisition (DAQ) Circuit for a $\leq 100\text{kHz}$ Input Signal Bandwidth

Figure 8-4 shows a signal-chain with minimum external components. This signal-chain significantly reduces solution size by driving the ADS912x with the fully differential amplifier (FDA) THS4551.

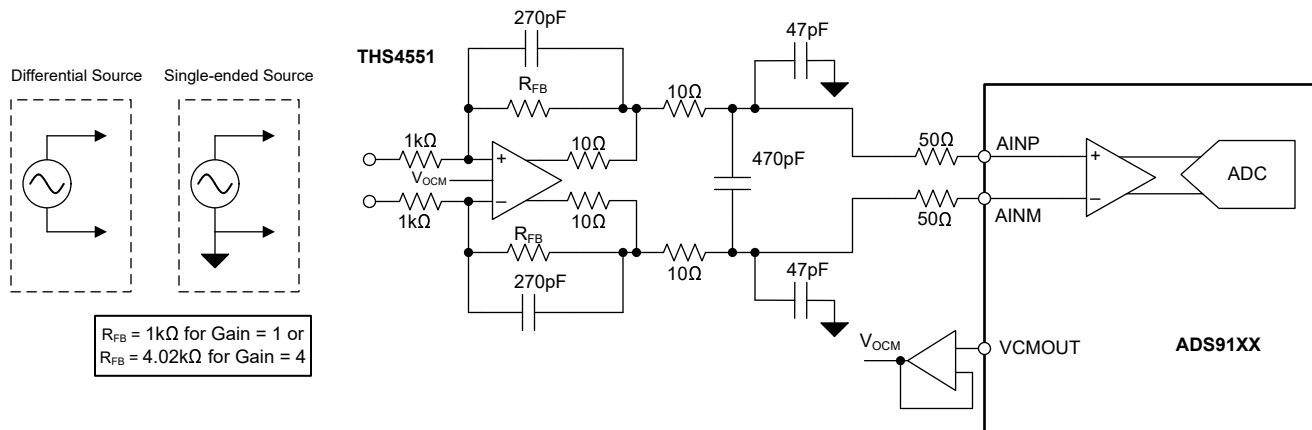


Figure 8-4. Data Acquisition (DAQ) Circuit for a $\leq 100\text{kHz}$ Input Signal Bandwidth

8.2.2.1 Design Requirements

Table 8-2 lists the parameters for this typical application.

Table 8-2. Design Parameters

| PARAMETER | VALUE |
|------------------------|----------------------|
| SNR | $\geq 91\text{dB}$ |
| THD | $\leq -110\text{dB}$ |
| Input signal frequency | $\leq 100\text{kHz}$ |

8.2.2.2 Application Curves

Figure 8-5 and Figure 8-6 show the FFT plots for the circuit in Figure 8-4.

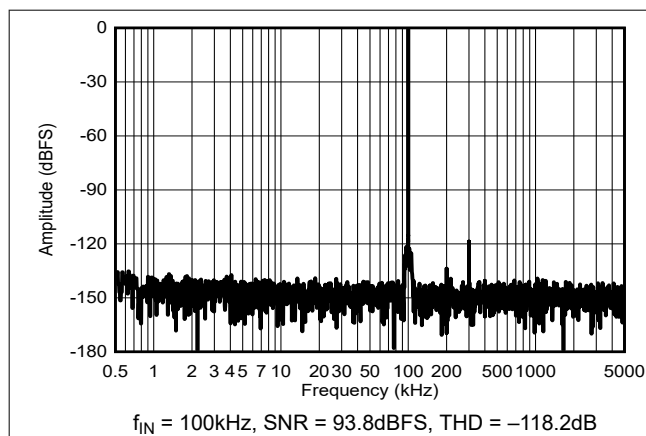


Figure 8-5. Typical FFT at 10MSPS: ADS9128

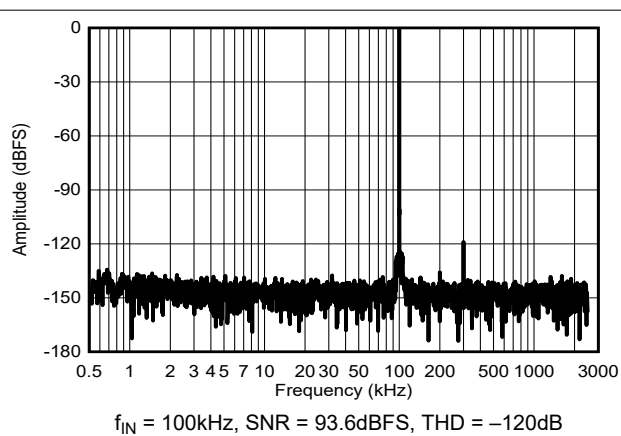


Figure 8-6. Typical FFT at 5MSPS: ADS9127

8.2.3 Data Acquisition (DAQ) Circuit for a $\leq 1\text{MHz}$ Input Signal Bandwidth

Figure 8-7 shows a solution with minimum external components. This signal-chain significantly reduces signal-chain size by driving the ADS9129 with the THS4541, which enables low-distortion performance with low power over wide signal bandwidth.

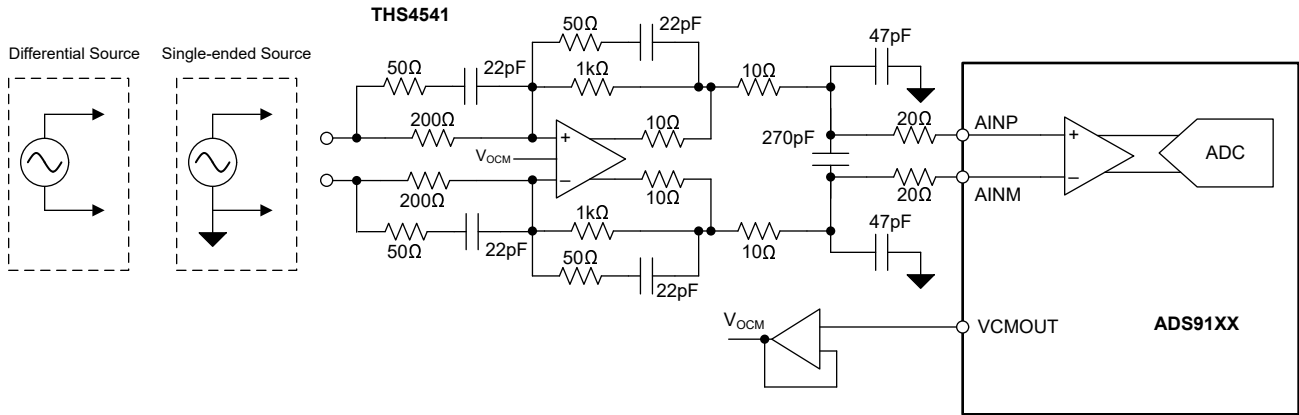


Figure 8-7. Data Acquisition (DAQ) Circuit for a $\le 1\text{MHz}$ Input Signal Bandwidth

8.2.3.1 Design Requirements

Table 8-3 lists the parameters for this typical application.

Table 8-3. Design Parameters

| PARAMETER | VALUE |
|------------------------|----------------------|
| SNR | $\geq 80\text{dB}$ |
| THD | $\leq -100\text{dB}$ |
| Input signal frequency | $\leq 1\text{MHz}$ |

8.2.3.2 Application Curves

Figure 8-8 and Figure 8-9 show the FFT plots for the circuit in Figure 8-7.

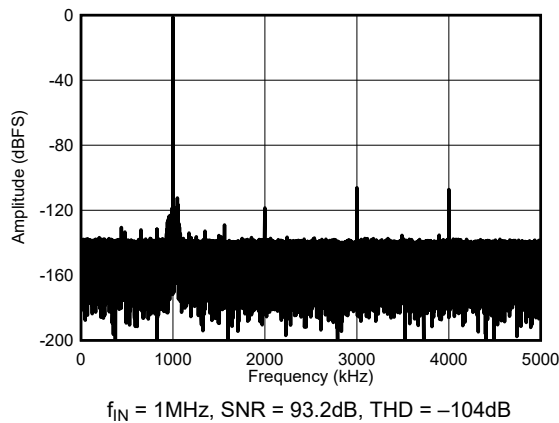


Figure 8-8. Typical FFT at 10MSPS: ADS9128

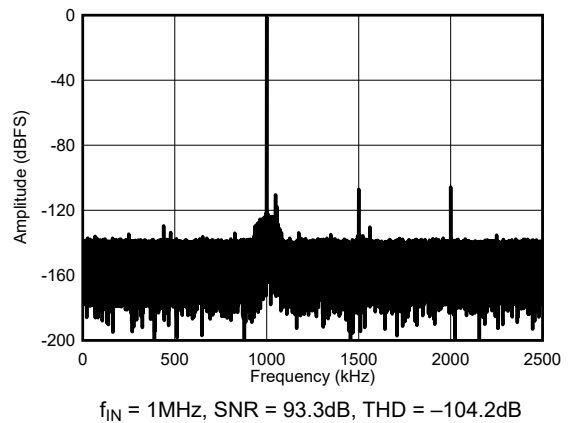


Figure 8-9. Typical FFT at 5MSPS: ADS9127

8.3 Power Supply Recommendations

The ADS912x has two independent power supplies, AVDD_5V and VDD_1V8. The AVDD_5V supply provides power to the ADC driver. The VDD_1V8 supply provides power to the analog circuits and the digital interface. Set the AVDD_5 and VDD_1V8 supplies independently to voltages within the permissible range. [Figure 8-10](#) shows how to decouple the power supplies.

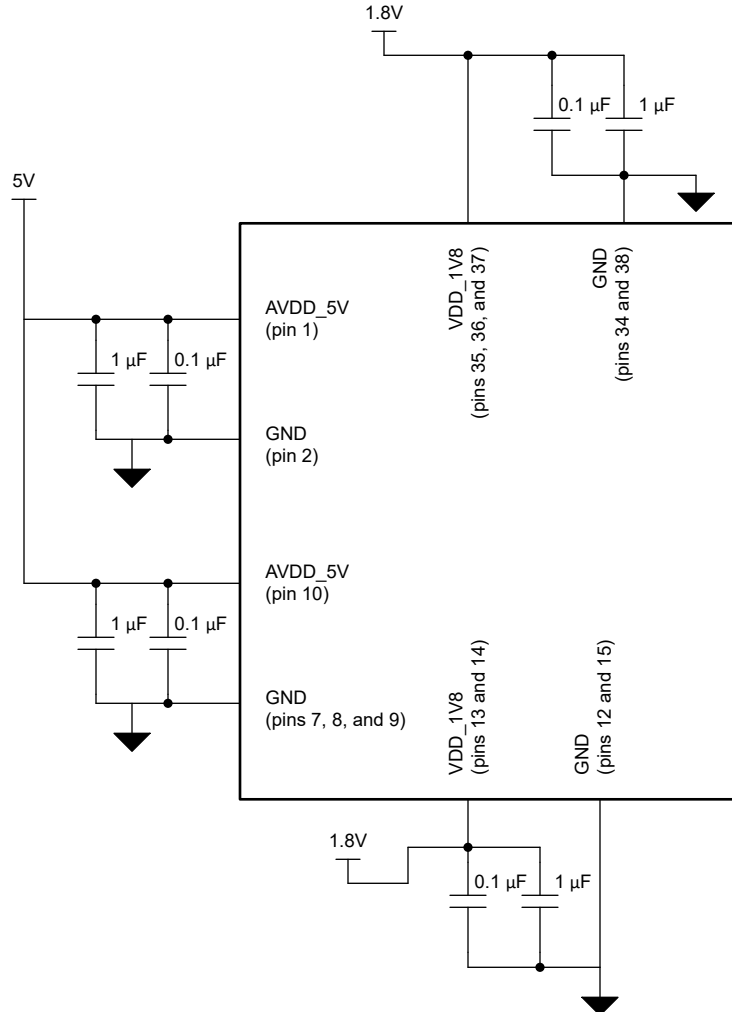


Figure 8-10. Power-Supply Decoupling

8.4 Layout

8.4.1 Layout Guidelines

Figure 8-11 shows a board layout example for the ADS912x. Avoid crossing digital lines with the analog signal path and keep the analog input signals and the reference signals away from noise sources. Use 0.1 μ F ceramic bypass capacitors in close proximity to the analog (AVDD_5V and VDD_1V8) and digital (VDD_1V8) power-supply pins. Avoid placing vias between the power-supply pins and the bypass capacitors. Place the reference decoupling capacitor close to the device REFIO and REFM pins. Avoid placing vias between the REFIO pin and the bypass capacitors. Connect the GND and REFM pins to a ground plane using short, low-impedance paths.

8.4.2 Layout Example

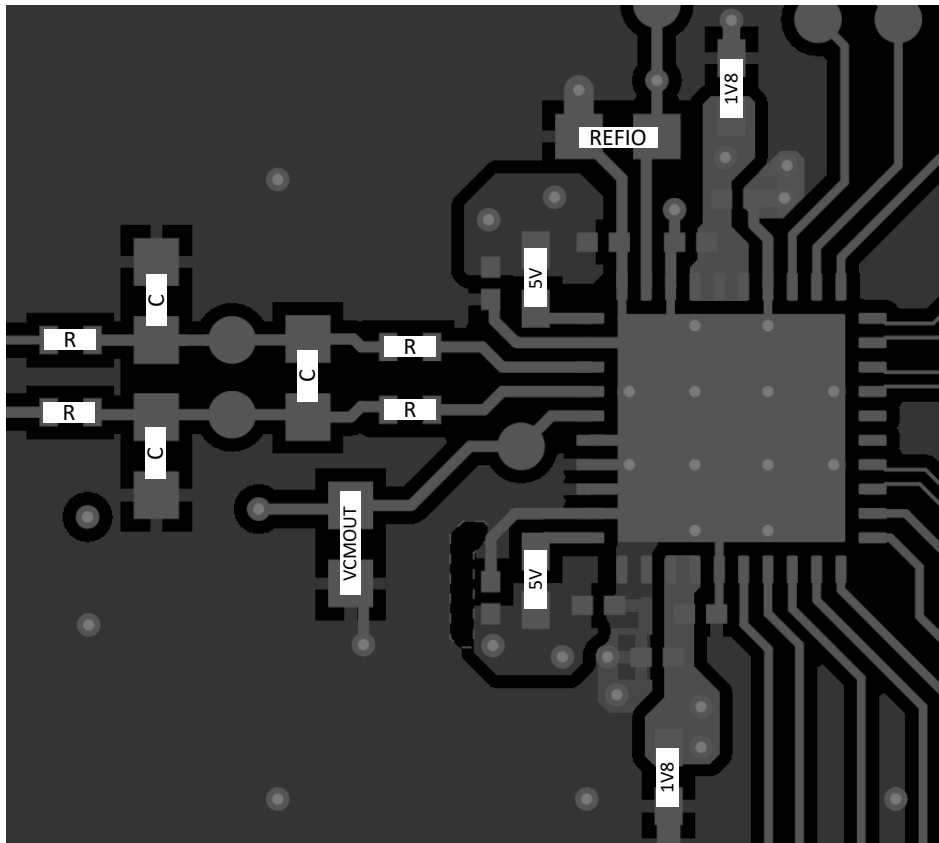


Figure 8-11. Example Layout

9 Device and Documentation Support

TI offers an extensive line of development tools. Tools and software to evaluate the performance of the device, generate code, and develop solutions are listed below.

9.1 Documentation Support

9.1.1 Related Documentation

For related documentation, see the following:

- Texas Instruments, [REF70 2 ppm/°C Maximum Drift, 0.23 ppm_{p-p} 1/f Noise, Precision Voltage Reference data sheet](#)
- Texas Instruments, [THS4551 Low-Noise, Precision, 150-MHz, Fully Differential Amplifier data sheet](#)
- Texas Instruments, [THS4541 Negative Rail Input, Rail-to-Rail Output, Precision, 850-MHz Fully Differential Amplifier data sheet](#)

9.2 Receiving Notification of Documentation Updates

To receive notification of documentation updates, navigate to the device product folder on [ti.com](#). Click on *Notifications* to register and receive a weekly digest of any product information that has changed. For change details, review the revision history included in any revised document.

9.3 Support Resources

TI E2E™ [support forums](#) are an engineer's go-to source for fast, verified answers and design help — straight from the experts. Search existing answers or ask your own question to get the quick design help you need.

Linked content is provided "AS IS" by the respective contributors. They do not constitute TI specifications and do not necessarily reflect TI's views; see TI's [Terms of Use](#).

9.4 Trademarks

TI E2E™ is a trademark of Texas Instruments.
All trademarks are the property of their respective owners.

9.5 Electrostatic Discharge Caution



This integrated circuit can be damaged by ESD. Texas Instruments recommends that all integrated circuits be handled with appropriate precautions. Failure to observe proper handling and installation procedures can cause damage.

ESD damage can range from subtle performance degradation to complete device failure. Precision integrated circuits may be more susceptible to damage because very small parametric changes could cause the device not to meet its published specifications.

9.6 Glossary

[TI Glossary](#) This glossary lists and explains terms, acronyms, and definitions.

10 Revision History

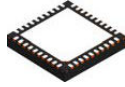
NOTE: Page numbers for previous revisions may differ from page numbers in the current version.

| DATE | REVISION | NOTES |
|----------|----------|-----------------|
| May 2025 | * | Initial Release |

11 Mechanical, Packaging, and Orderable Information

The following pages include mechanical, packaging, and orderable information. This information is the most current data available for the designated devices. This data is subject to change without notice and revision of this document. For browser-based versions of this data sheet, refer to the left-hand navigation.

11.1 Mechanical Data

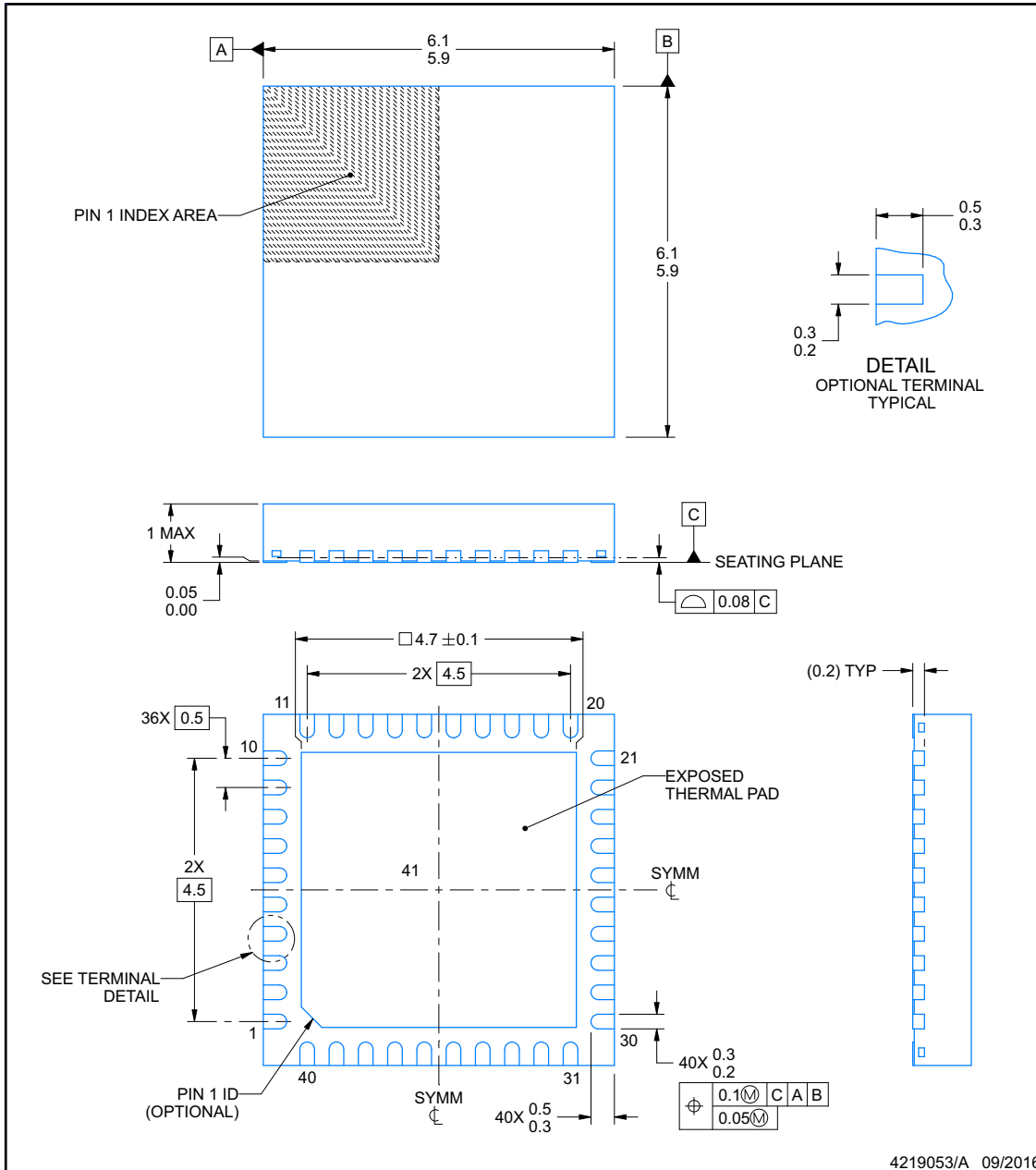


PACKAGE OUTLINE

RHA0040C

VQFN - 1 mm max height

PLASTIC QUAD FLATPACK - NO LEAD



4219053/A 09/2016

NOTES:

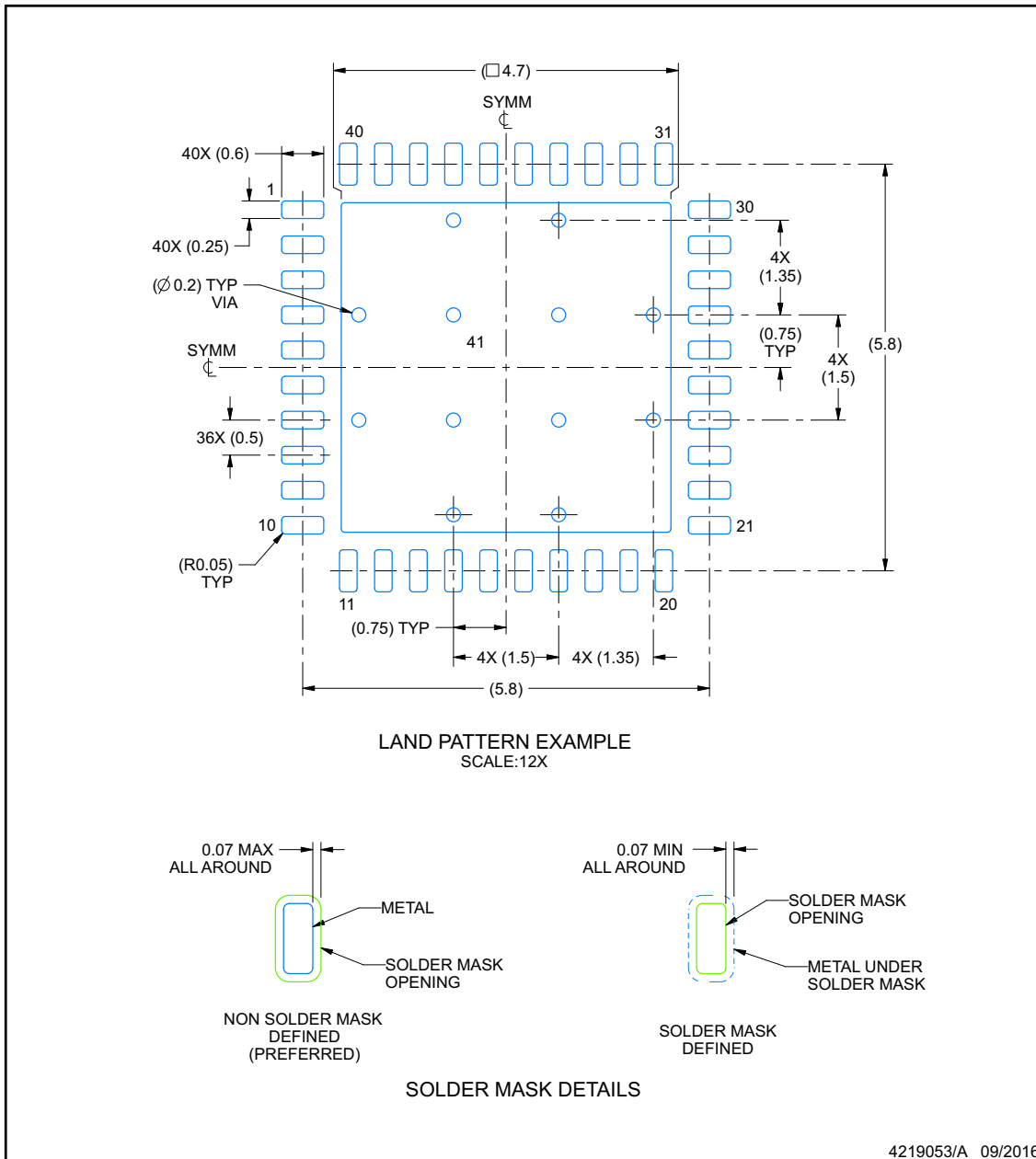
1. All linear dimensions are in millimeters. Any dimensions in parenthesis are for reference only. Dimensioning and tolerancing per ASME Y14.5M.
2. This drawing is subject to change without notice.
3. The package thermal pad must be soldered to the printed circuit board for thermal and mechanical performance.

EXAMPLE BOARD LAYOUT

RHA0040C

VQFN - 1 mm max height

PLASTIC QUAD FLATPACK - NO LEAD



NOTES: (continued)

- This package is designed to be soldered to a thermal pad on the board. For more information, see Texas Instruments literature number SLUA271 (www.ti.com/lit/sl原因271).
- Vias are optional depending on application, refer to device data sheet. If any vias are implemented, refer to their locations shown on this view. It is recommended that vias under paste be filled, plugged or tented.

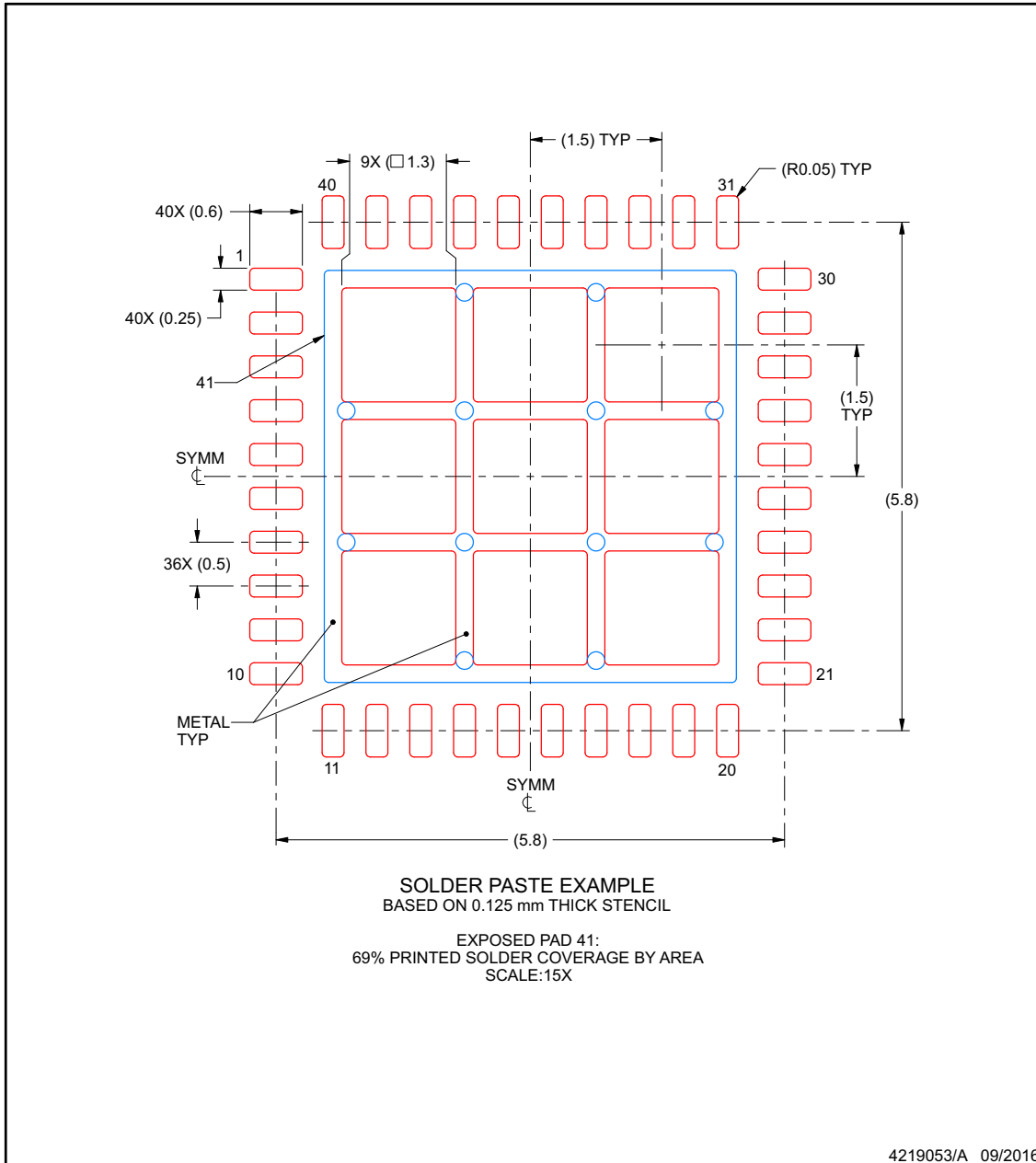
www.ti.com

EXAMPLE STENCIL DESIGN

RHA0040C

VQFN - 1 mm max height

PLASTIC QUAD FLATPACK - NO LEAD



NOTES: (continued)

6. Laser cutting apertures with trapezoidal walls and rounded corners may offer better paste release. IPC-7525 may have alternate design recommendations.

www.ti.com

PACKAGING INFORMATION

| Orderable part number | Status (1) | Material type (2) | Package Pins | Package qty Carrier | RoHS (3) | Lead finish/ Ball material (4) | MSL rating/ Peak reflow (5) | Op temp (°C) | Part marking (6) |
|-----------------------------|---------------|----------------------|-----------------|-----------------------|-------------|--------------------------------------|-----------------------------------|--------------|---------------------|
| ADS9127RHAR | Active | Production | VQFN (RHA) 40 | 2500 LARGE T&R | Yes | NIPDAU | Level-3-260C-168 HR | -40 to 125 | ADS9127 |
| ADS9128RHAR | Active | Production | VQFN (RHA) 40 | 2500 LARGE T&R | Yes | NIPDAU | Level-3-260C-168 HR | -40 to 125 | ADS9128 |
| ADS9129RHAR | Active | Production | VQFN (RHA) 40 | 2500 LARGE T&R | Yes | NIPDAU | Level-3-260C-168 HR | -40 to 125 | ADS9129 |

(1) **Status:** For more details on status, see our [product life cycle](#).

(2) **Material type:** When designated, preproduction parts are prototypes/experimental devices, and are not yet approved or released for full production. Testing and final process, including without limitation quality assurance, reliability performance testing, and/or process qualification, may not yet be complete, and this item is subject to further changes or possible discontinuation. If available for ordering, purchases will be subject to an additional waiver at checkout, and are intended for early internal evaluation purposes only. These items are sold without warranties of any kind.

(3) **RoHS values:** Yes, No, RoHS Exempt. See the [TI RoHS Statement](#) for additional information and value definition.

(4) **Lead finish/Ball material:** Parts may have multiple material finish options. Finish options are separated by a vertical ruled line. Lead finish/Ball material values may wrap to two lines if the finish value exceeds the maximum column width.

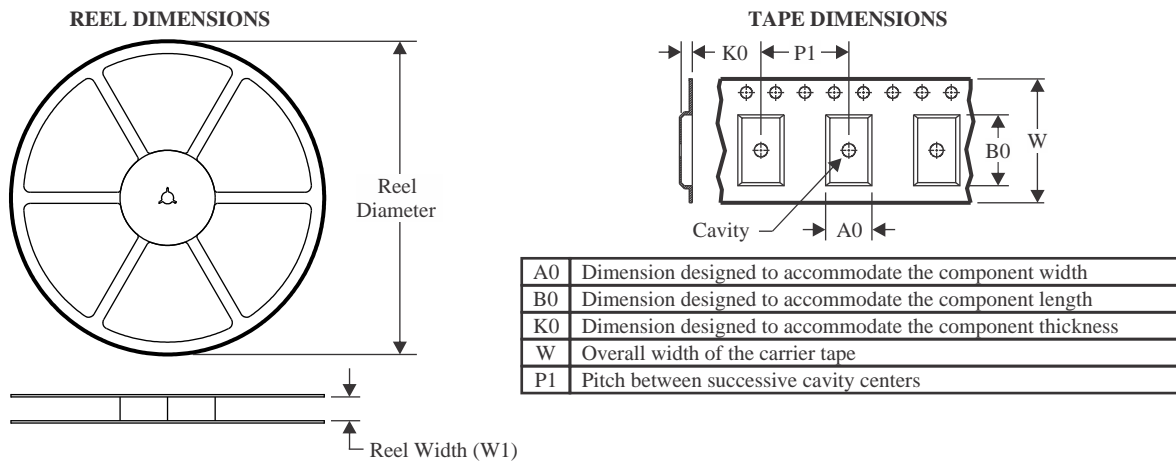
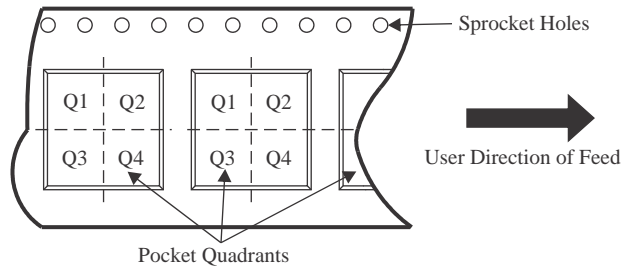
(5) **MSL rating/Peak reflow:** The moisture sensitivity level ratings and peak solder (reflow) temperatures. In the event that a part has multiple moisture sensitivity ratings, only the lowest level per JEDEC standards is shown. Refer to the shipping label for the actual reflow temperature that will be used to mount the part to the printed circuit board.

(6) **Part marking:** There may be an additional marking, which relates to the logo, the lot trace code information, or the environmental category of the part.

Multiple part markings will be inside parentheses. Only one part marking contained in parentheses and separated by a "-" will appear on a part. If a line is indented then it is a continuation of the previous line and the two combined represent the entire part marking for that device.

Important Information and Disclaimer: The information provided on this page represents TI's knowledge and belief as of the date that it is provided. TI bases its knowledge and belief on information provided by third parties, and makes no representation or warranty as to the accuracy of such information. Efforts are underway to better integrate information from third parties. TI has taken and continues to take reasonable steps to provide representative and accurate information but may not have conducted destructive testing or chemical analysis on incoming materials and chemicals. TI and TI suppliers consider certain information to be proprietary, and thus CAS numbers and other limited information may not be available for release.

In no event shall TI's liability arising out of such information exceed the total purchase price of the TI part(s) at issue in this document sold by TI to Customer on an annual basis.

TAPE AND REEL INFORMATION

QUADRANT ASSIGNMENTS FOR PIN 1 ORIENTATION IN TAPE


*All dimensions are nominal

| Device | Package Type | Package Drawing | Pins | SPQ | Reel Diameter (mm) | Reel Width W1 (mm) | A0 (mm) | B0 (mm) | K0 (mm) | P1 (mm) | W (mm) | Pin1 Quadrant |
|-------------|--------------|-----------------|------|------|--------------------|--------------------|---------|---------|---------|---------|--------|---------------|
| ADS9127RHAR | VQFN | RHA | 40 | 2500 | 330.0 | 16.4 | 6.3 | 6.3 | 1.1 | 12.0 | 16.0 | Q2 |
| ADS9128RHAR | VQFN | RHA | 40 | 2500 | 330.0 | 16.4 | 6.3 | 6.3 | 1.1 | 12.0 | 16.0 | Q2 |

TAPE AND REEL BOX DIMENSIONS


*All dimensions are nominal

| Device | Package Type | Package Drawing | Pins | SPQ | Length (mm) | Width (mm) | Height (mm) |
|-------------|--------------|-----------------|------|------|-------------|------------|-------------|
| ADS9127RHAR | VQFN | RHA | 40 | 2500 | 367.0 | 367.0 | 35.0 |
| ADS9128RHAR | VQFN | RHA | 40 | 2500 | 367.0 | 367.0 | 35.0 |

GENERIC PACKAGE VIEW

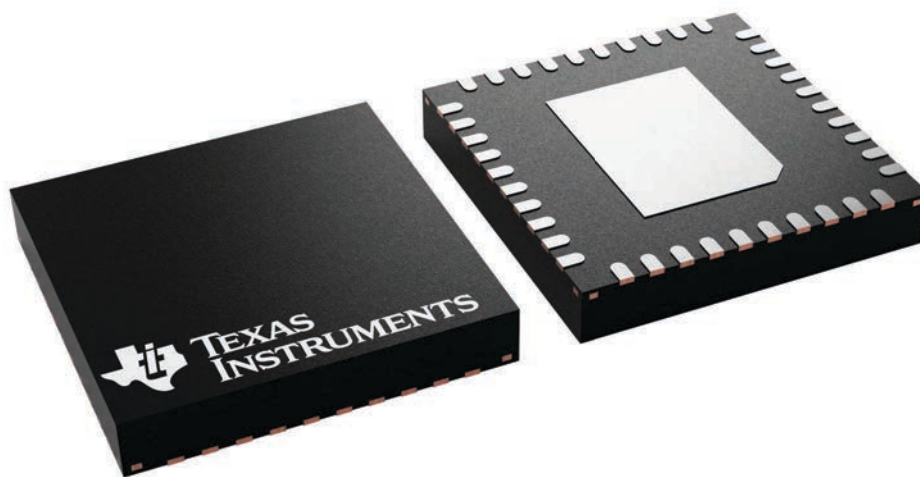
RHA 40

VQFN - 1 mm max height

6 x 6, 0.5 mm pitch

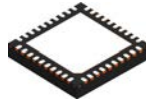
PLASTIC QUAD FLATPACK - NO LEAD

This image is a representation of the package family, actual package may vary.
Refer to the product data sheet for package details.



4225870/A

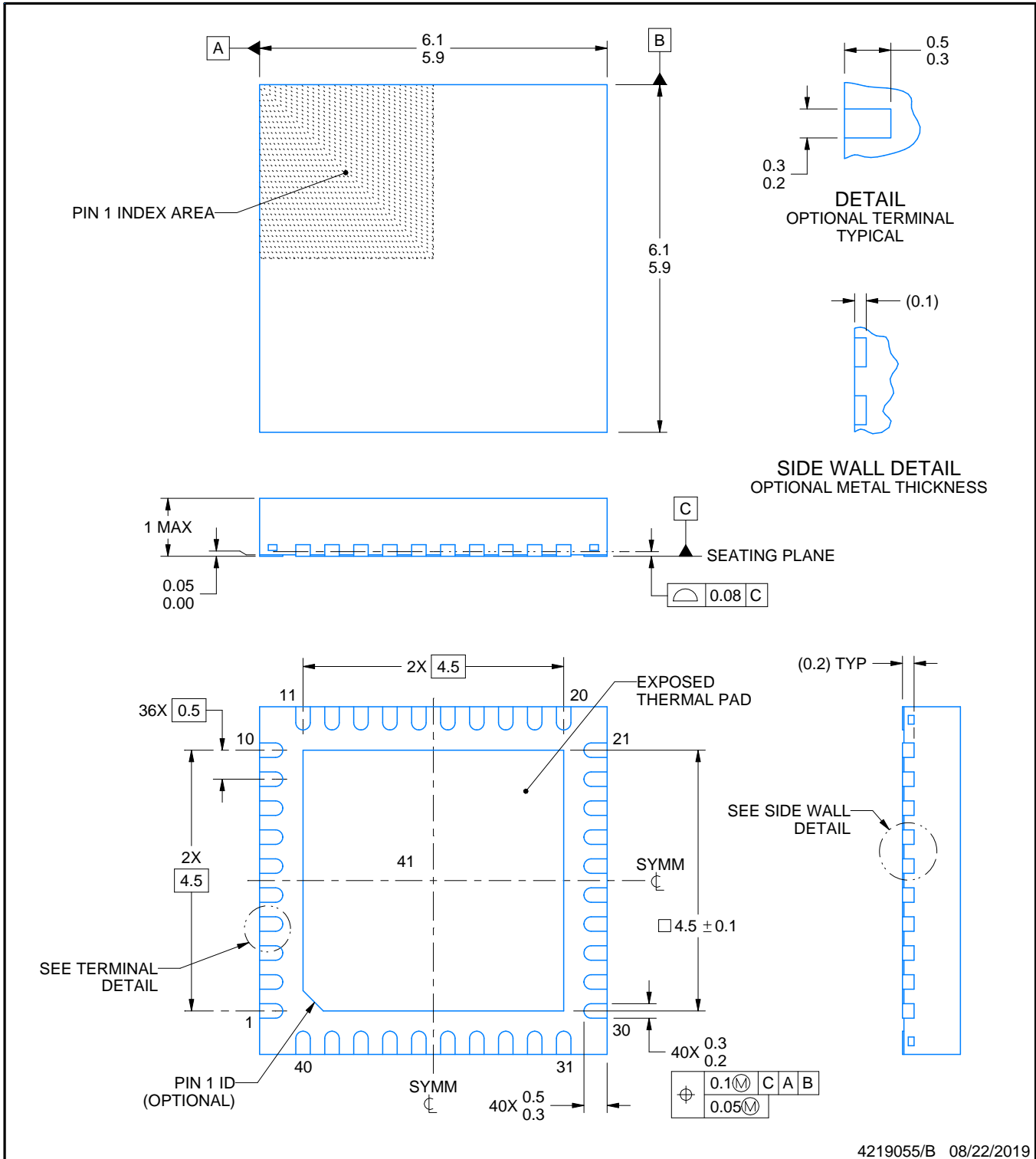
RHA0040H



PACKAGE OUTLINE

VQFN - 1 mm max height

PLASTIC QUAD FLATPACK - NO LEAD



4219055/B 08/22/2019

NOTES:

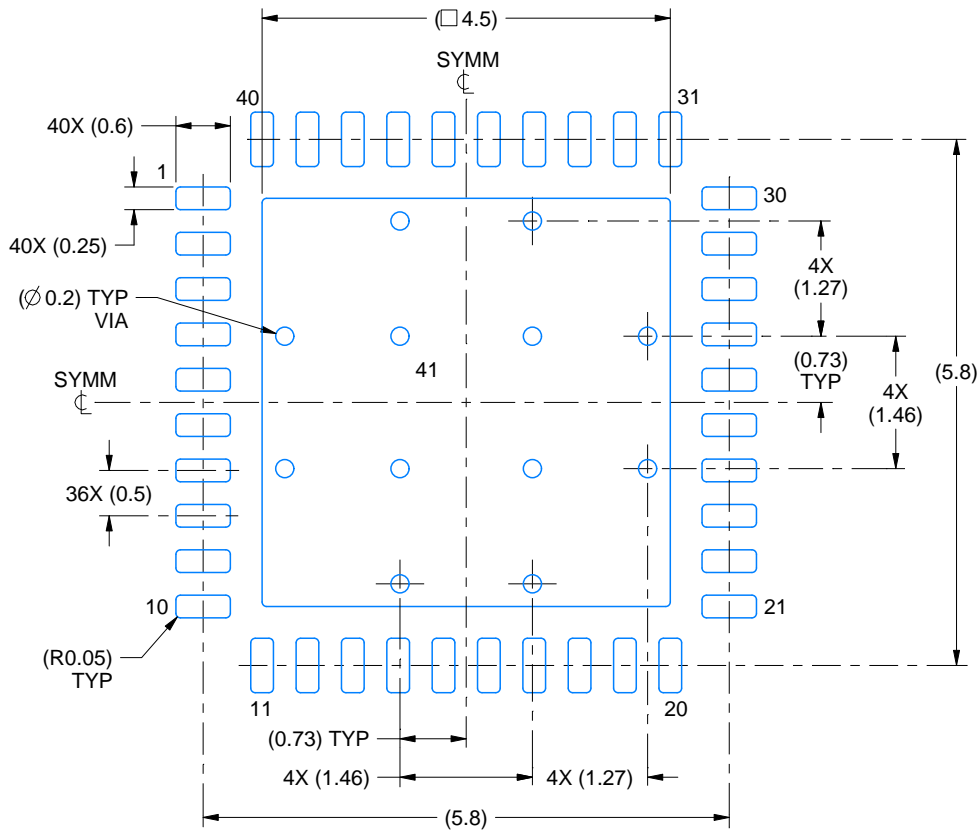
1. All linear dimensions are in millimeters. Any dimensions in parenthesis are for reference only. Dimensioning and tolerancing per ASME Y14.5M.
2. This drawing is subject to change without notice.
3. The package thermal pad must be soldered to the printed circuit board for thermal and mechanical performance.

EXAMPLE BOARD LAYOUT

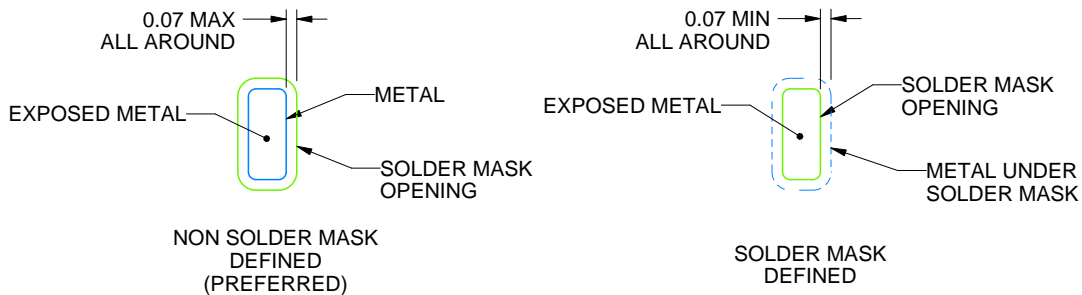
RHA0040H

VQFN - 1 mm max height

PLASTIC QUAD FLATPACK - NO LEAD



LAND PATTERN EXAMPLE
EXPOSED METAL SHOWN
SCALE:12X



SOLDER MASK DETAILS

4219055/B 08/22/2019

NOTES: (continued)

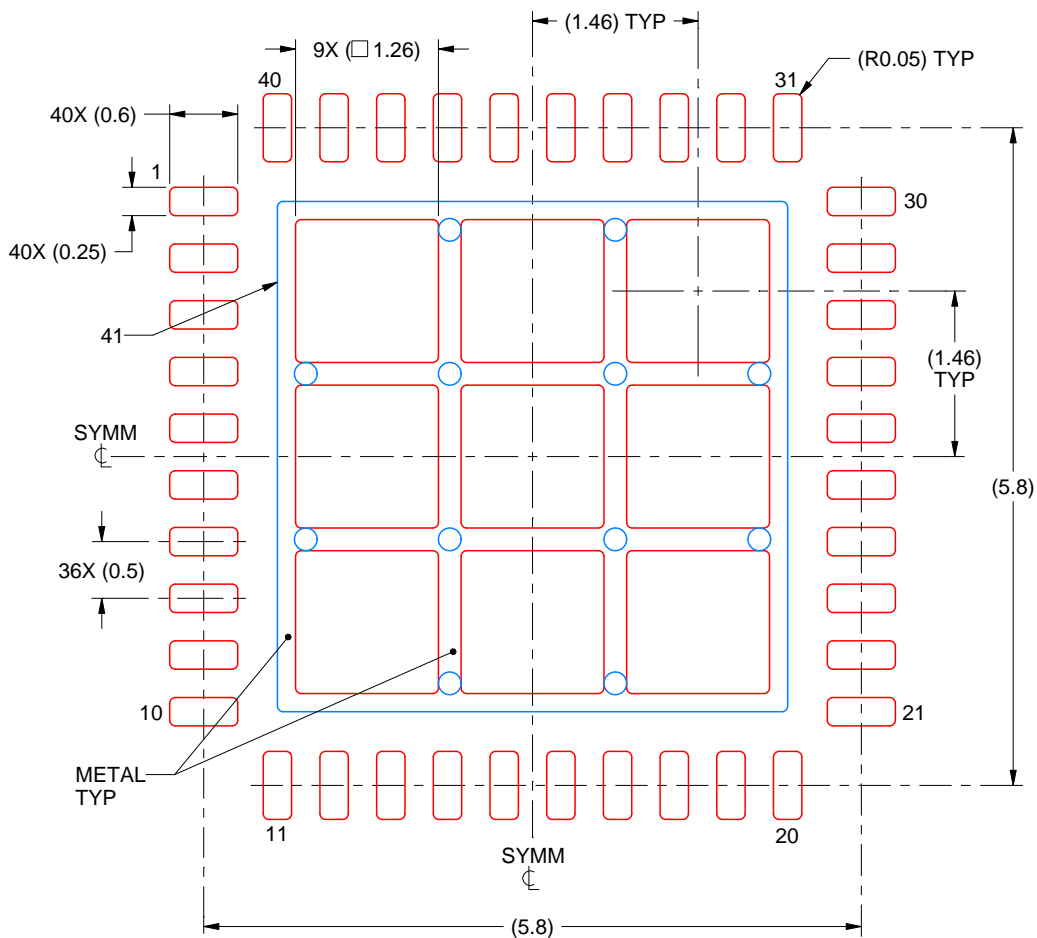
4. This package is designed to be soldered to a thermal pad on the board. For more information, see Texas Instruments literature number SLUA271 (www.ti.com/lit/sluea271).
5. Vias are optional depending on application, refer to device data sheet. If any vias are implemented, refer to their locations shown on this view. It is recommended that vias under paste be filled, plugged or tented.

EXAMPLE STENCIL DESIGN

RHA0040H

VQFN - 1 mm max height

PLASTIC QUAD FLATPACK - NO LEAD



SOLDER PASTE EXAMPLE
 BASED ON 0.125 mm THICK STENCIL

EXPOSED PAD 41:
 70% PRINTED SOLDER COVERAGE BY AREA
 SCALE:15X

4219055/B 08/22/2019

NOTES: (continued)

6. Laser cutting apertures with trapezoidal walls and rounded corners may offer better paste release. IPC-7525 may have alternate design recommendations.

IMPORTANT NOTICE AND DISCLAIMER

TI PROVIDES TECHNICAL AND RELIABILITY DATA (INCLUDING DATA SHEETS), DESIGN RESOURCES (INCLUDING REFERENCE DESIGNS), APPLICATION OR OTHER DESIGN ADVICE, WEB TOOLS, SAFETY INFORMATION, AND OTHER RESOURCES "AS IS" AND WITH ALL FAULTS, AND DISCLAIMS ALL WARRANTIES, EXPRESS AND IMPLIED, INCLUDING WITHOUT LIMITATION ANY IMPLIED WARRANTIES OF MERCHANTABILITY, FITNESS FOR A PARTICULAR PURPOSE OR NON-INFRINGEMENT OF THIRD PARTY INTELLECTUAL PROPERTY RIGHTS.

These resources are intended for skilled developers designing with TI products. You are solely responsible for (1) selecting the appropriate TI products for your application, (2) designing, validating and testing your application, and (3) ensuring your application meets applicable standards, and any other safety, security, regulatory or other requirements.

These resources are subject to change without notice. TI grants you permission to use these resources only for development of an application that uses the TI products described in the resource. Other reproduction and display of these resources is prohibited. No license is granted to any other TI intellectual property right or to any third party intellectual property right. TI disclaims responsibility for, and you will fully indemnify TI and its representatives against, any claims, damages, costs, losses, and liabilities arising out of your use of these resources.

TI's products are provided subject to [TI's Terms of Sale](#) or other applicable terms available either on [ti.com](https://www.ti.com) or provided in conjunction with such TI products. TI's provision of these resources does not expand or otherwise alter TI's applicable warranties or warranty disclaimers for TI products.

TI objects to and rejects any additional or different terms you may have proposed.

Mailing Address: Texas Instruments, Post Office Box 655303, Dallas, Texas 75265
Copyright © 2025, Texas Instruments Incorporated